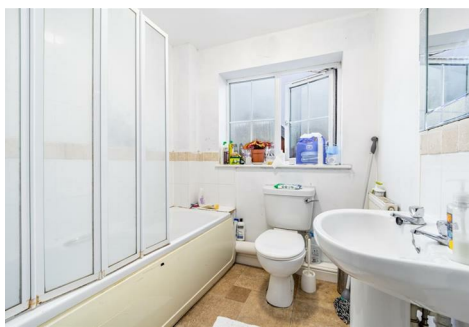


BRUCE MATHER

INDEPENDENT ESTATE AGENT

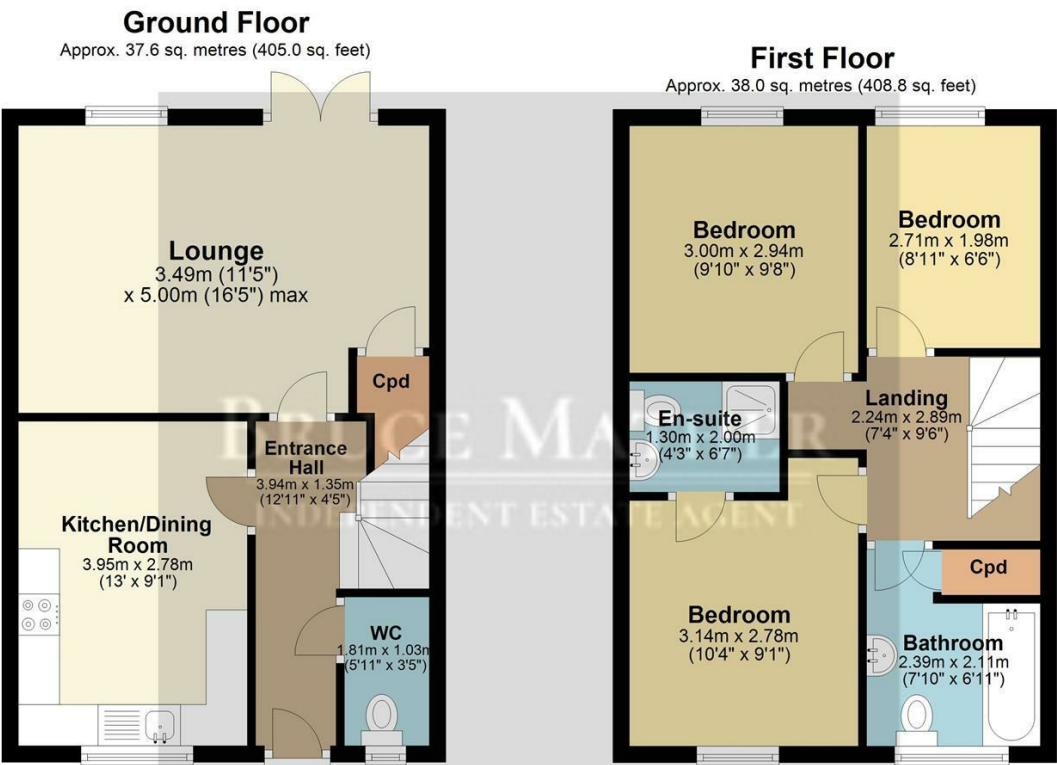


1 Tannery Close, Boston, PE21 8DB

Asking Price £170,000

A three bedroom semi-detached house in a central location in the heart of Boston. Upstairs comprises of three bedrooms and two bathrooms, the master has an en-suite. Downstairs of the entrance hall has a WC, kitchen/diner and a reception room with understairs storage and a glass door to the garden, the garden is fenced in and grassed. To the front there is several parking spaces. The property is located in a quiet cul-de-sac in Boston, where you have all your amenities on your doorstep including schools and restaurants. Please call Bruce Mather Estate Agents on 01205 365032 to arrange a viewing.

Floor Plan

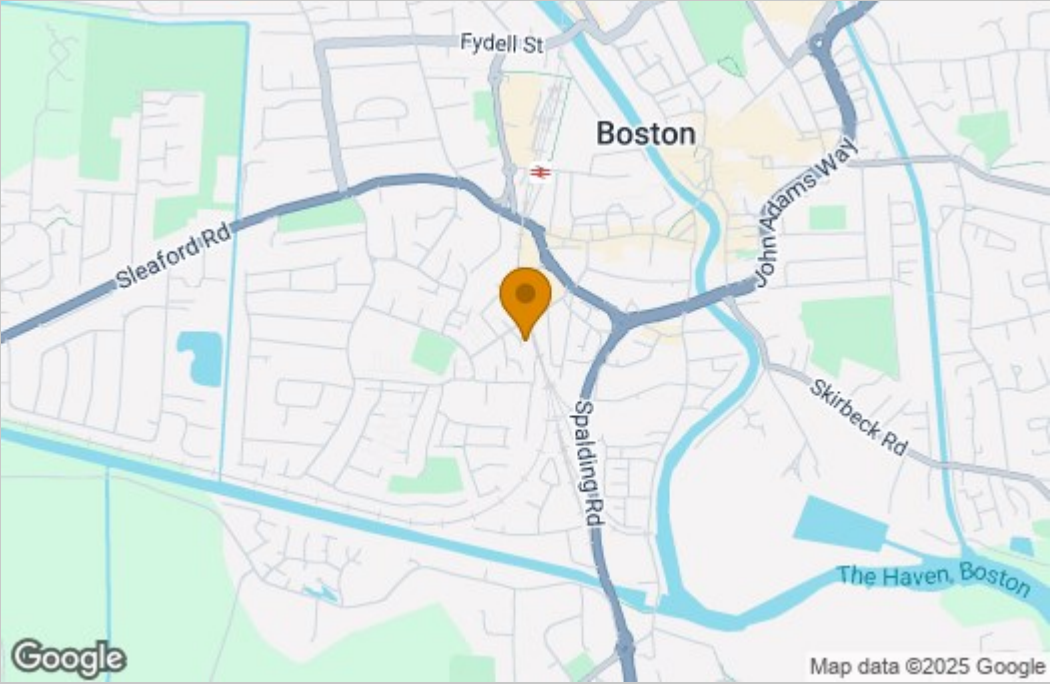


Total area: approx. 75.6 sq. metres (813.9 sq. feet)

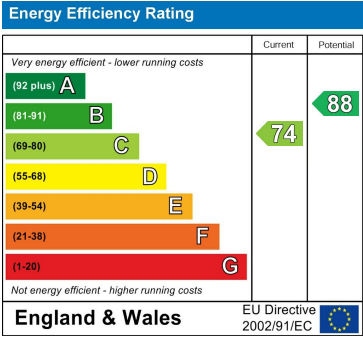
All images used are for illustrative purposes. Images are for guidance only and may not necessarily represent a true and accurate depiction of the condition of property. Floor plans are intended to give an indication of the layout only. All images, floor plans and dimensions are not intended to form part any contract.
Plan produced using PlanUp.



Area Map



Energy Efficiency Graph



These particulars, whilst believed to be accurate are set out as a general outline only for guidance and do not constitute any part of an offer or contract. Intending purchasers should not rely on them as statements of representation of fact, but must satisfy themselves by inspection or otherwise as to their accuracy. No person in this firms employment has the authority to make or give any representation or warranty in respect of the property.