

PRICE
OIEO
£200,000

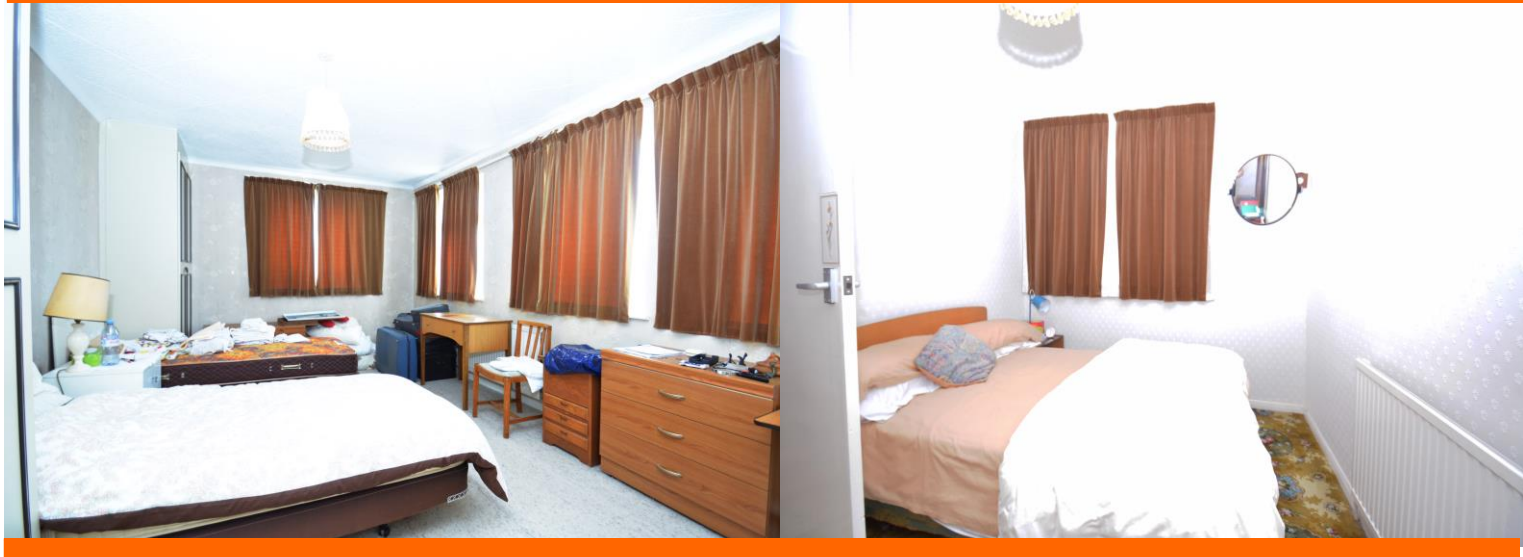
Freehold



**SPACIOUS 2 BED SEMI DETACHED HOUSE ON
THE OUTSKIRTS OF TOWN. REQUIRES SOME
UPDATING BUT HAS DOUBLE GLAZING AND
CENTRAL HEATING PLUS NO CHAIN TOO!**

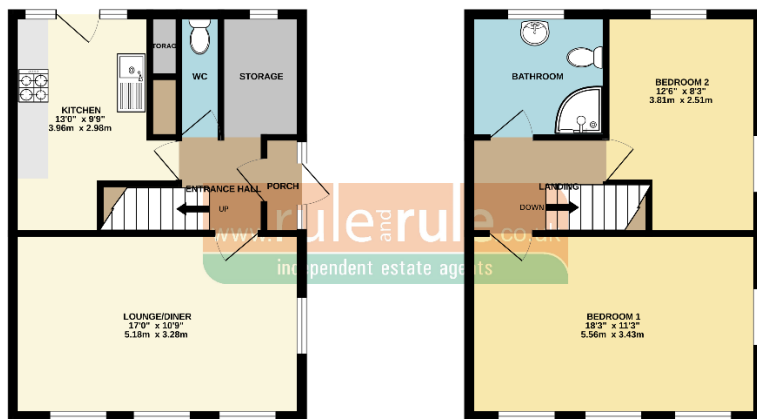
**Nursery Close, Sheerness
ME12 2QT**





GROUND FLOOR
402 sq.ft. (37.3 sq.m.) approx.

1ST FLOOR
402 sq.ft. (37.3 sq.m.) approx.



Score	Energy rating	Current	Potential
92+	A		
81-91	B		
69-80	C		
55-68	D	59 D	74 C
39-54	E		
21-38	F		
1-20	G		

This generously sized two-bedroom semi-detached home enjoys a convenient position on a no-through road on the edge of Sheerness, within easy reach of local schools, the seafront and town centre.

Inside, the property benefits from gas central heating and double glazing, with scope for further modernisation to suit your personal style. Outside, there's ample off-street parking to the front, a shared driveway to the side, and a low-maintenance paved rear garden with timber shed and fenced boundaries.

Offered with no onward chain for a smooth move—contact Mark or Shannon today to arrange your escorted viewing.

MONEY LAUNDERING REGULATIONS 2007: Intending purchasers will be asked to produce identification and proof of financial status when an offer is received. We would ask for your co-operation in order that there will be no delay in agreeing the sale. THE PROPERTY MISDESCRIPTIONS ACT 1991 - Rule and Rule has not tested any apparatus, equipment, fixtures and fittings or services and so cannot verify that they are in working order or fit for the purpose. A Buyer is advised to obtain verification from their Solicitor or Surveyor. References to the Tenure of a Property are based on information supplied by the Seller. Rule and Rule have not had sight of the title documents. A Buyer is advised to obtain verification from their Solicitor. You are advised to check the availability of this property before travelling any distance to view. We have taken every precaution to ensure that these details are accurate and not misleading. If there is any point which is of particular importance to you, please contact us and we will provide any information you require. This is advisable, particularly if you intend to travel some distance to view the property. The mention of any appliances and services within these details does not imply that they are in full and efficient working order. These particulars are in draft form awaiting Vendors confirmation of their accuracy. These details must therefore be taken as a guide only and approved details should be requested from the agents. Covenants may apply to this property.