





Mew Stone East

Allenheys Road, Salcombe, TQ8 8HU

- Contemporary House
- Immaculately presented
- Stunning far reaching views
- Within walking distance to the town
- Off road parking & large double garage
- Private rear garden
- Bright and spacious
- Five bedrooms and Five bathrooms
- EPC Rating C

Please scan the QR code for Material Information



2 Island Square, Island Street, Salcombe, Devon, TQ8 8DP
Telephone 01548 843593
salcombe@luscombemaye.com
www.luscombemaye.com



Mew Stone East is an outstanding contemporary house, boasting far-reaching uninterrupted views across the Salcombe Estuary towards East Portlemouth and the countryside beyond. Located in an elevated position the property takes full advantage of the sunshine throughout the day, complemented by a series of terraced gardens both to the front and the rear of the house.

Arranged over three floors, the heart of the home is the upper floor with an open-plan design allowing day-to-day living to benefit from outstanding views across the Estuary. The generous sitting area is flooded with natural light from the sliding doors onto the balcony as well as from the extensive ceiling windows. There is a more intimate, cosy area with gas fire for sitting and entertaining and space for a large dining table. The kitchen area has two large island units including a breakfast bar with built-in hob and extractor. There are further fitted units including a large oven, built-in fridge and freezer, wine fridge and ample storage cupboards with a sliding glass door to the side giving access to the rear garden/patio area.

The main entrance to the property is found on the first floor, with a covered walkway from the lift. There is also a separate cloakroom. To the front, there is a stunning Master Bedroom Suite with a large walk-in wardrobe area and an en-suite bathroom with a double shower and bath. A large terrace with sliding doors provides this room with beautiful Estuary views and captures the morning light. There is a further double bedroom, currently used as a cinema room, with en-suite shower/steam room on this level with a door leading to a small adjacent terrace.

The ground floor offers a superb Guest Bedroom Suite with an en-suite shower room and sliding doors onto a substantial terrace with glorious Estuary views. Bedroom 4 and Bedroom 5 are also located on this level. Bedroom 4 enjoys the use of the family bathroom and has a unique outlook through into an inner courtyard featuring beautifully sculptured plants with attendant lighting. Bedroom 5, with an en-suite shower room, also has access to the inner courtyard. In addition, there is a Utility Room and large linen cupboard.





The Lower Ground Floor of the property provides an extremely practical garage for two vehicles to be parked securely, with additional storage areas, access to the lift and separate shower room. There is also space outside the garage doors for 2 further vehicles to be parked.

Professionally landscaped gardens and terracing surround the house providing privacy and create a stunning setting for the property. From the expansive double garage and parking, steps lead up to the main door past a substantial terrace and attractive pond. At the rear of the property, steps lead up to a series of terraces, beautifully planted with Italian pines and shrubs, creating different seating and entertaining areas, so that at all times of the day one can find full sun or shade. At the top of the garden there is a gate giving pedestrian access out onto Bonaventure Road.

SERVICES: Mains electricity, water and drainage. Gas underfloor heating.

TENURE: Freehold

LOCAL AUTHORITY AND COUNCIL TAX: South Hams District Council. Council Tax Band H.

VIEWING: Strictly by appointment with Luscombe Maye, Salcombe or the Country and Waterside Department

DIRECTIONS: From the A381 into Salcombe, turn left at the crossroads into Onslow Road. Follow the road down the hill until you reach the turning to Allenhayes Road on your right hand side. Mew Stone East will then be found after about 100 yards on the right hand side.

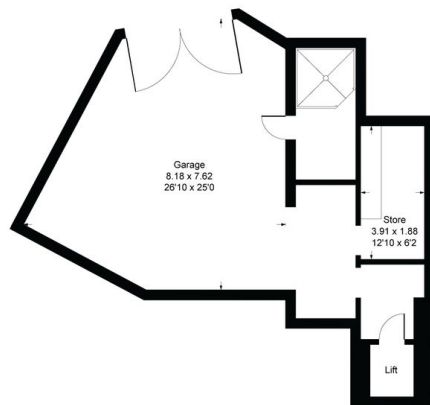


Mew Stone East, Allenhayes Road, Salcombe, TQ8 8HU,

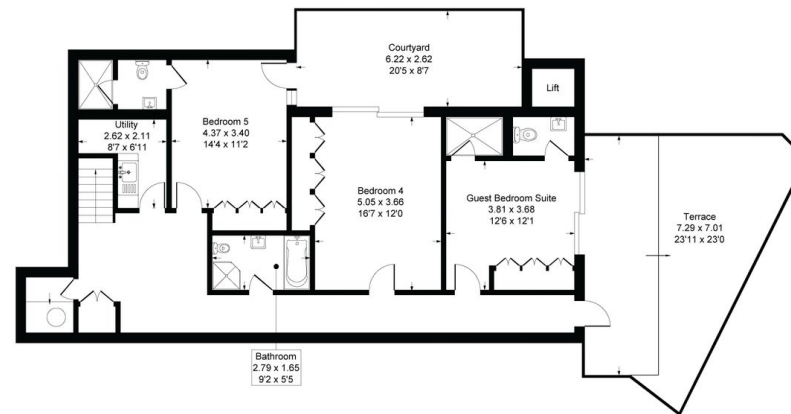
Approximate Gross Internal Floor Area = 348.8 sq m / 3755 sq ft

Garage Area = 47.9 sq m / 516 sq ft

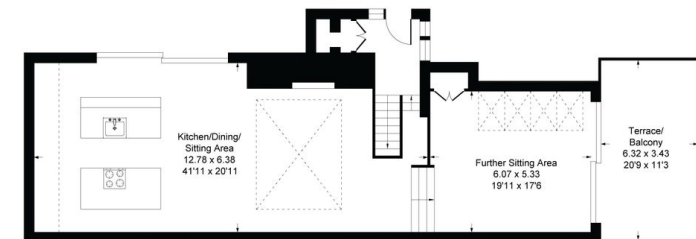
Total Area = 396.7 sq m / 4271 sq ft



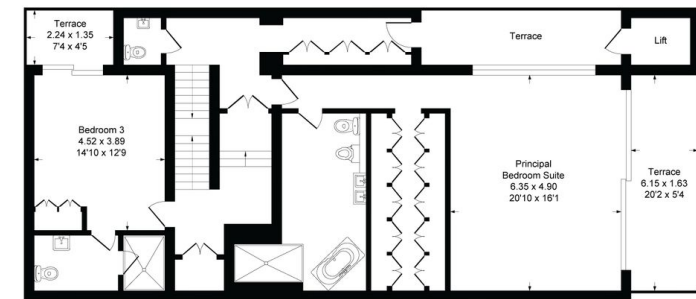
Lower Ground Floor



Ground Floor



Second Floor



First Floor

Illustration for identification purposes only, measurements are approximate, not to scale.

