







Salty Dog

14 Salcombe Retreat, Soar Mill TQ7 3DS

No.14 Salcombe Retreat is located in a peaceful area. The lodge has one allocated parking space and a wrap-around decked veranda. The lodge is immaculate throughout having been beautifully maintained. The open plan living area is light and airy, with 2 double bedrooms, one having en-suite shower room and an additional bathroom

At Salcombe Retreat you will find yourself between the open countryside and the coastal beaches, with easy access to both. The South West Coast Path is a short distance away, with spectacular scenery and miles of paths to explore, Soar Mill Cove is only a short walk too, perfect for paddling with little ones. Further afield, Dartmoor can be enjoyed by all the family.

Salcombe Retreat is also ideally located between Salcombe and Hope Cove, both of which offer a wide variety of activity for the busy family or those enjoying a few peaceful days away. There are fine sandy beaches and sheltered waters in Salcombe with a wide range of shops, cafes, bars and restaurants. Similarly Hope Cove has 2 sandy beaches, water based activities, pubs and hotels.

The lodge can be used for 11 months of the year but must be vacated from mid January to mid February. The lodges have a strong rental history.

- Views towards the sea
- Beautifully presented
- Stylish open plan layout
- Sunny decked veranda
- 2 double bedrooms
- Close to sandy beach
- Communal grounds
- Car parking space
- On-site café & shop
- Great walking nearby
- Boat parking available

A beautifully presented holiday lodge, immaculate throughout, with allocated parking, spectacular National Trust scenery, easy access onto the South West Coast Path and water views down to the coast



2 Island Square, Salcombe, Devon, TQ8 8DP
 Telephone 01548 845090
salcombe@luscombemaye.com
www.luscombemaye.com

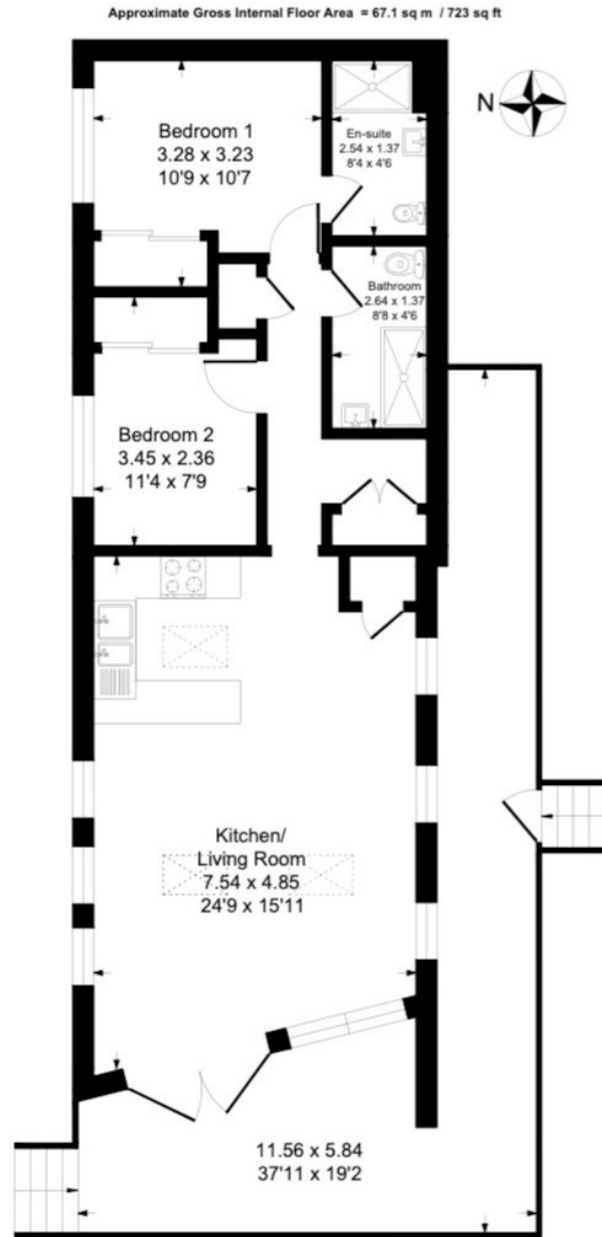


Illustration for identification purposes only, measurements are approximate, not to scale.



SERVICES

Mains electric, water, private drainage. LPG gas heating.

COUNCIL TAX

Not currently rated.

TENURE

Leasehold 125 years from 2009. Ground Rent £2,784 plus VAT.
Service Charge £2,274 plus VAT.

LOCAL AUTHORITY

South Hams District Council, Follaton House, Plymouth Road,
Totnes TQ9 5NE. Tel: 01803 861234.

VIEWINGS

Viewing strictly by appointment with Luscombe Maye 01548
845090.

DIRECTIONS

From the A381 Kingsbridge to Salcombe road, turn right on the
sharp bend in Malborough, following signs to Soar Mill. After
about 2 miles, Salcombe Retreat will be found on your right
hand side.

