







14 Mead Drive

Thurlestone, TQ7 3TA

This generous detached bungalow occupies an excellent position on the Mead Estate in Thurlestone and is raised up from the road affording the bungalow a fantastic outlook across the nearby hills and countryside, with sea views away to the West. Facing South and light and bright throughout, 14 Mead Drive is well-proportioned with large and spacious rooms. The large living room and adjoining dining room form an L-shape around a front-facing corner patio perfectly positioned to enjoy the sun and the views. Behind is a well-appointed separate kitchen and behind this a useful utility room with guest WC. There are three double bedrooms and a family bathroom with the main bedroom benefitting from built-in storage and an en-suite bathroom with walk-in shower.

The plot itself is substantial and well-maintained gardens surround the property with lovely lawns and well-established trees and shrubs. To the rear is a patio which is private and secluded. An integral double garage is to one side with sloped driveway offering excellent parking.

The property has been very well-cared for over recent years having been used as a much loved home, but could benefit some modernisation in places.

Thurlestone is a wonderful coastal village beautifully located alongside dramatic coastline and stunning beaches. The village offers excellent amenities with a highly regarded hotel and spa, a shop and post-office, a primary school, Thurlestone golf club and a local pub. Thurlestone is a short drive from the renowned sailing town of Salcombe and the thriving estuary town of Kingsbridge as well as many other interesting villages and hamlets in the surrounding countryside. Thurlestone is the perfect place from which to explore all of the South Hams and the West Country with peaceful coastal living on your doorstep.

A superb detached bungalow with generous proportions throughout occupying an elevated position on a private estate with sea views and featuring a double garage and driveway parking.

- **Detached bungalow**
- **Coastal village location**
- **A short walk to the beach**
- **Country and sea views**
- **Beautiful gardens**
- **Well proportioned**
- **Three double bedrooms**
- **Two bathrooms**
- **Double garage and driveway**
- **Some modernisation required**



2 Island Square, Salcombe, Devon, TQ8 8DP
Telephone 01548 845090
salcombe@luscombemaye.com

www.luscombemaye.com

14 Mead Drive, Thurlestone, Kingsbridge, TQ7 3TA

Approximate Gross Internal Floor Area = 172.4 sq m / 1856 sq ft
 Garage Area = 35.3 sq m / 381 sq ft
 Total Area = 207.7 sq m / 2236 sq ft

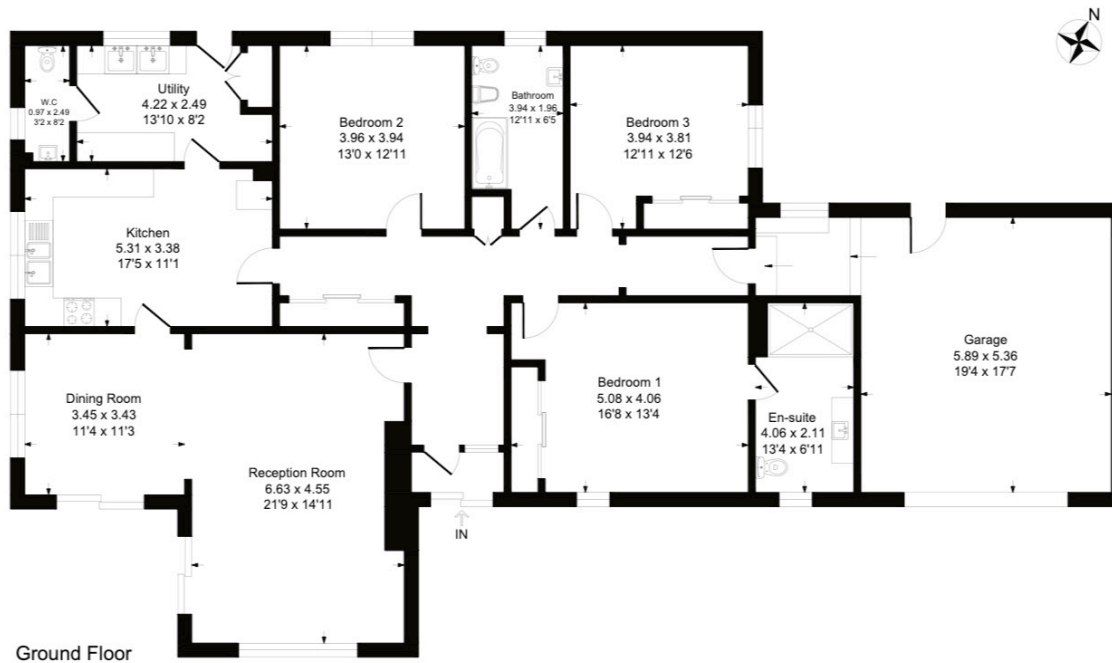


Illustration for identification purposes only, measurements are approximate, not to scale.



SERVICES

Mains electric, water and drainage. Oil-fired central heating.

COUNCIL TAX

The property is in Council Tax Band G

TENURE

Freehold

LOCAL AUTHORITY

South Hams District Council, Follaton House, Plymouth Road, Totnes TQ9 5NE. Tel: 01803 861234.

VIEWINGS

Viewing strictly by appointment with Luscombe Maye 01548 845090

DIRECTIONS

Approaching Thurlestone from Kingsbridge, take the first left before entering the village on to Court Park, go down the hill and follow the road round bearing right and then enter the private Mead estate by passing over the cattle grid, follow this road into Mead Drive and proceed to the bottom and follow the road around to the right, No.14 will be found on the right hand side.

Important Notice: Luscombe Maye gives notice that: 1. These particulars do not constitute an offer or contract or part thereof. 2. All descriptions, photographs and plans are for guidance only and should not be relied upon as statements or representations of fact. All measurements are approximate and not necessarily to scale. Any prospective purchaser must satisfy themselves of the correctness of the information within the particulars by inspection or otherwise. 3. Luscombe Maye does not have any authority to give any representations or warranties whatsoever in relation to this property (including but not limited to planning/building regulations), nor can it enter into any contract on behalf of the Vendor.

