



FRONT NORTH EAST ELEVATION  
SCALE: 1:100

## Plot 3

Speyside Close Segensworth Road, Titchfield Park, PO15 5EH

Guide Price £525,000



# Plot 3

Segensworth Road |  
Titchfield Park | PO15 5EH  
Guide Price £525,000

W&W are delighted to offer for sale this brand new three bedroom detached bungalow finished to an exceptionally high specification. The property will boast over 900 Sq.Ft providing a lounge, kitchen/dining room, three bedrooms, family bathroom & en-suite. The property will enjoy a garden, garage & parking.

Segensworth Road is situated with the amenities of Locks Heath & Whiteley Shopping Centres within easy reach, as well as those of Park Gate which are a 25 minute walk away. Excellent transport links including A27, M27 & Swanwick train station are close by.





Brand new 2023 three bedroom detached bungalow

Finished to a high standard throughout

The property boasts over 900 Sq.Ft of living accommodation

Sought after location with mature woodlands surrounding

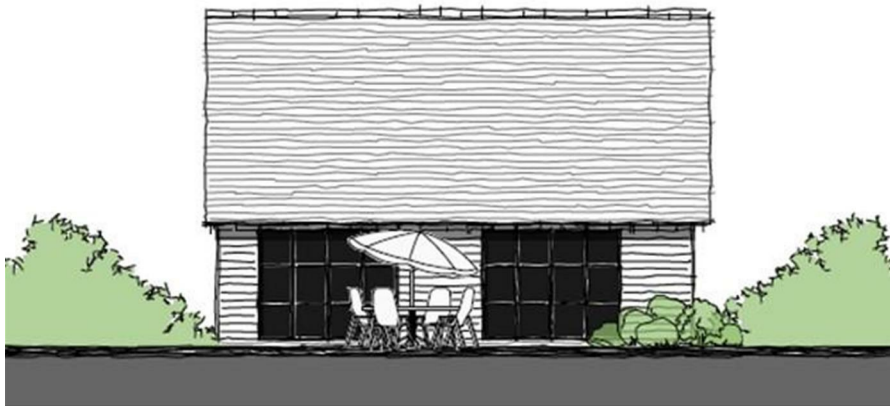
Underfloor heating throughout the property

Kitchen with quartz worktops & premium integrated appliances

Luxurious bathrooms comprising three piece suites, tiled walls & flooring

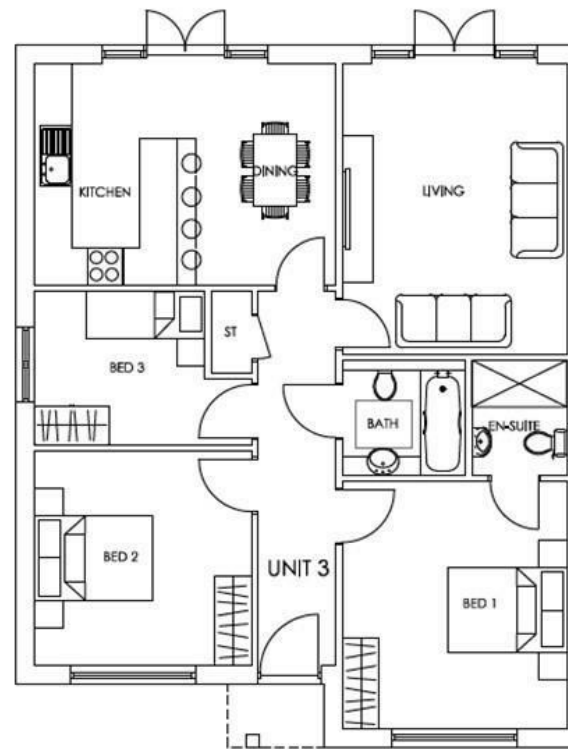
Garage & parking

AGENTS NOTE - some of the marketing photos are from a previous development and the main image not necessarily of indicated plot



REAR SOUTH WEST ELEVATION  
SCALE: 1:100





GROUND FLOOR PLAN  
SCALE: 1:100

Energy Efficiency Rating		
	Current	Potential
Very energy efficient - lower running costs		
(92 plus) <b>A</b>		
(81-91) <b>B</b>		
(69-80) <b>C</b>		
(55-68) <b>D</b>		
(39-54) <b>E</b>		
(21-38) <b>F</b>		
(1-20) <b>G</b>		
Not energy efficient - higher running costs		
<b>England &amp; Wales</b>	EU Directive 2002/91/EC	

Council Tax Band - New Build

Tenure - Freehold

Current EPC Rating - TBC

Potential EPC Rating - TBC

20e Bridge Road  
Park Gate  
Southampton  
Hampshire  
SO31 7GE  
01489 577990

parkgate@walkerwaterer.co.uk  
www.walkerwaterer.co.uk