



ATLANTIS
APARTMENTS
G R E A T Y A R M O U T H



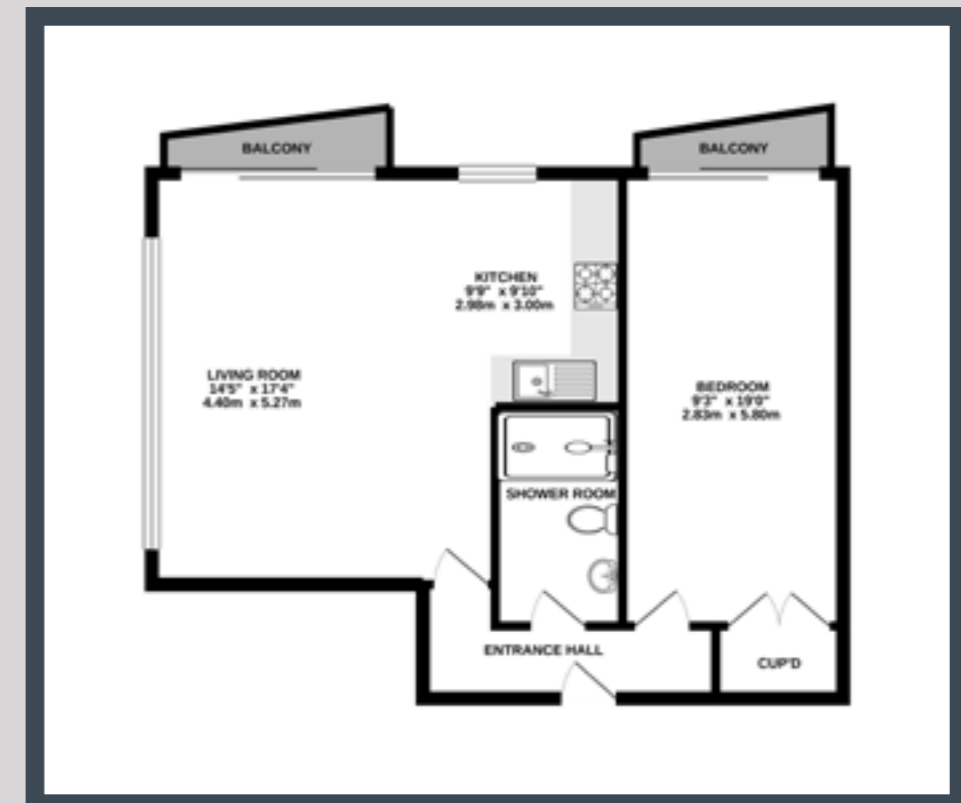
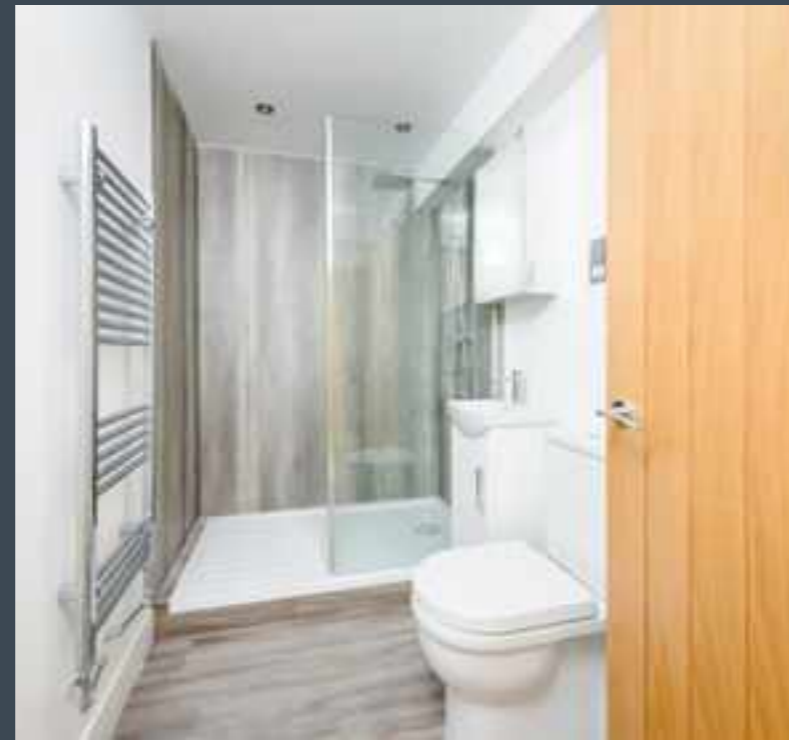
A MODERN CONVERSION OF THE ATLANTIS TOWER IN
THE HEART OF THE FAMOUS GOLDEN MILE SEA-FRONT



Type A - 1 Bedroom

The one bedroom apartments are located at the front of the building offering unrestricted views of the sea through the large windows in the living area, as well as a balcony. The kitchen is modern in design, with handle-less doors and stylish worktops. A number of integrated appliances are also fitted, including a washer/dryer, fridge, electric oven with extractor and a ceramic hob. The shower room is modern yet functional, fitted with a rainfall shower head, chrome towel rail and a vanity wash basin. The double bedroom is also of a good size, with side-aspect sliding doors offering access to the balcony.

60 sq m / 645 sq ft.

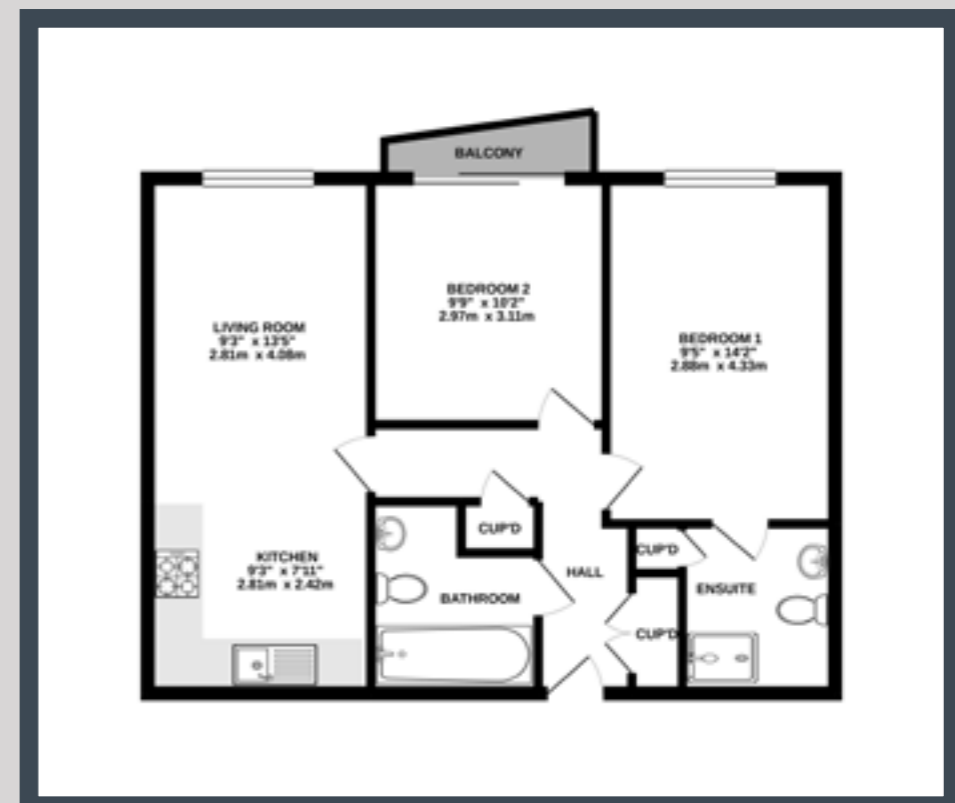




Type B - 2 Bedroom

Located in the middle of the building with side aspect windows offering glimpses of the Golden mile through the large windows in the living area, as well as a balcony overlooking the sea. The kitchen is modern in design, with handle-less doors and stylish worktops. A number of integrated appliances are also fitted, including a washer/dryer, fridge, electric oven with extractor and a ceramic hob. The family bathroom comes with a bath with over head rainfall shower, chrome towel rail and a vanity wash basin. The master bedroom has an en-suite and also offers views from the balcony accessed by large sliding doors.

62 sq m / 667 sq ft.



A SUPERB BALANCE OF MODERN LIVING
WITH THE CHARM AND HERITAGE
OF GREAT YARMOUTH

Type C - 2 Bedroom

This two bedroom apartment boasts spectacular views over the town's rooftops and church steeples are visible from every window, as well as a balcony overlooking the sea. The kitchen is modern in design, with handle-less doors and stylish worktops. A number of integrated appliances are also fitted, including a washer/dryer, fridge, electric oven with extractor and a ceramic hob. The family bathroom comes with a bath with over head rainfall shower, chrome towel rail and a vanity wash basin. The master bedroom offers en-suite with a rainfall shower head, chrome towel rail and a vanity wash basin. The master also offers views from the balcony accessed by large sliding doors.

83 sq m / 894 sq ft.





WINDOWS BECOME PICTURE FRAMES



Gorleston Office
78 High Street
Gorleston-On-Sea
Norfolk, NR31 7LP

01493 805888

enquiries@homesandlandresidential.co.uk

Mon - Fri: 9am - 5:30pm
Sat: 9am - 1pm
Sun: Closed

EPC Rating - TBC

Agents Notes

Whilst every care is taken when preparing details, HOMES & LAND RESIDENTIAL LTD., do not carry out any tests on any domestic appliances, which include Gas appliances & Electrical appliances. This means confirmation cannot be given as to whether or not they are in working condition. Measurements are always intended to be accurate, but they must be taken as approximate only. Every care has been taken to provide true descriptions, however, no guarantee can be given as to their accuracy, nor do they constitute any part of an offer or contract.