



Riverside House
Gorleston-On-Sea

Homes & Land Residential are delighted to offer Brand New One Bedroom and Two Bedroom apartments of the next phase of the popular NEW Waterside Court development off Riverside Road. The apartments are on First, Second and Third floors overlooking the riverfront.

ACCOMMODATION

ONE BEDROOM APARTMENT

Entrance Hallway

Built in cupboard, Hallway leads on to:

Bedroom 1

13' 3" x 9' 8" (4.04m x 2.95m)

Rear facing window.

En-suite

Side facing window. Full height shower boarding around the shower, vanity sink, towel radiator and WC.

Open Plan Kitchen/Dining/Living Area

22' 7" x 9' 11" (6.89m x 3.02m)

Front facing windows overlooking the riverfront. Kitchen range of fitted wall and base units, laminated work top, stainless steel sink/drainers with mixer tap, integral oven, hob and extractor fan.

TWO BEDROOM APARTMENT

Entrance Hallway

Entrance hallway leads on to:

Bathroom

Front facing window, panel bath, WC, vanity sink and towel radiator.

Bedroom 1

13' 10" x 10' 0" (4.22m x 3.06m)

Rear facing windows, built in cupboard.

En-suite

Full height shower boarding around the shower, vanity sink, towel radiator and WC.

Bedroom 2

10' 0" x 8' 4" (3.06m x 2.55m)

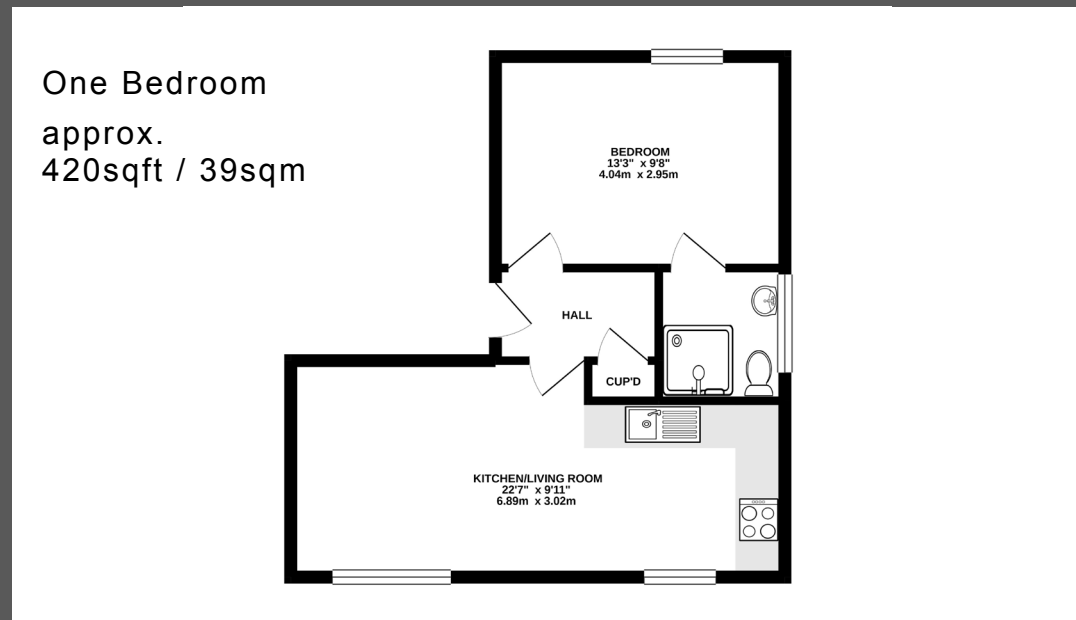
Rear facing window.

Open Plan Kitchen/Dining/Living Area

19' 11" x 14' 3" (6.07m x 4.35m)

Front, side and corner facing windows overlooking the riverfront.

Kitchen range of fitted wall and base units, laminated work top, stainless steel sink/drainers with mixer tap, integral oven, hob and extractor fan.



AGENT NOTES

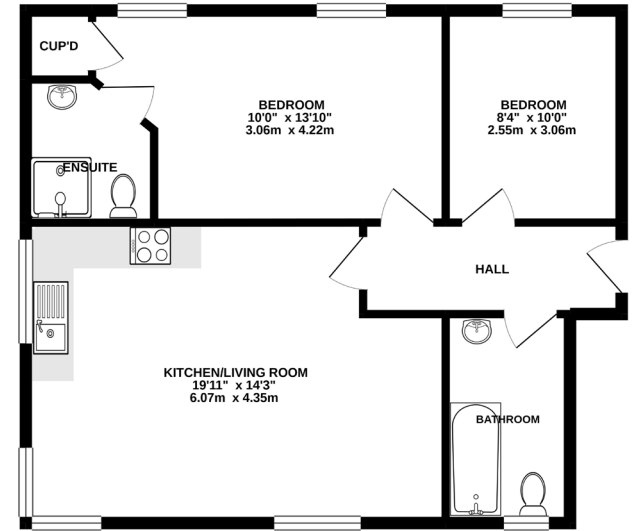
Internal images shown are of similar apartment type on the same development. Predicted EPC - TBC.
Maintenance/Service Charge TBC

Leasehold

135 YEARS TBC



Two Bedroom
approx.
678sqft / 63sqm





Gorleston Branch
78 High Street
Gorleston-On-Sea
NR31 6RQ

For further details call:
01493 805888
www.homesandland.property
enquiries@homesandland.property

Agents Notes

Whilst every care is taken when preparing details, HOMES & LAND RESIDENTIAL LTD., do not carry out any tests on any domestic appliances, which include Gas appliances & Electrical appliances. This means confirmation cannot be given as to whether or not they are in working condition. Measurements are always intended to be accurate, but they must be taken as approximate only. Every care has been taken to provide true descriptions, however, no guarantee can be given as to their accuracy, nor do they constitute any part of an offer or contract.