



## Underacres Close, Hemel Hempstead, HP2 7AL

### **£160,000**

Offered with the benefit of NO UPPER CHAIN is this ground floor purpose built flat. Boasting one bedroom, 14'5 lounge with balcony, 12'8 fitted kitchen, gas central heating, double glazing and external storage cupboard.

Located within easy reach of local shops and amenities, Hemel Hempstead town centre and the M1, M25 and A41 road links.



## Communal Hallway

### Entrance Hall



### Lounge 14'5 max x 13'9 max (4.39m max x 4.19m max)



### Balcony



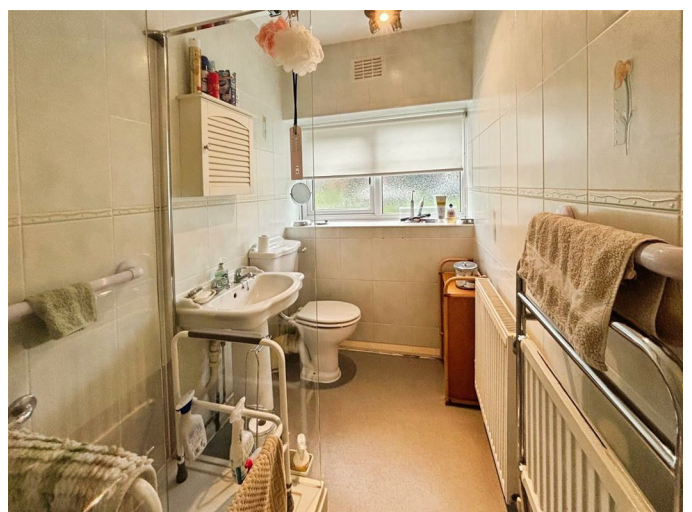
## Fitted Kitchen 12'8 x 7'0 (3.86m x 2.13m)



## Bedroom 12'1 x 10'9 (3.68m x 3.28m)

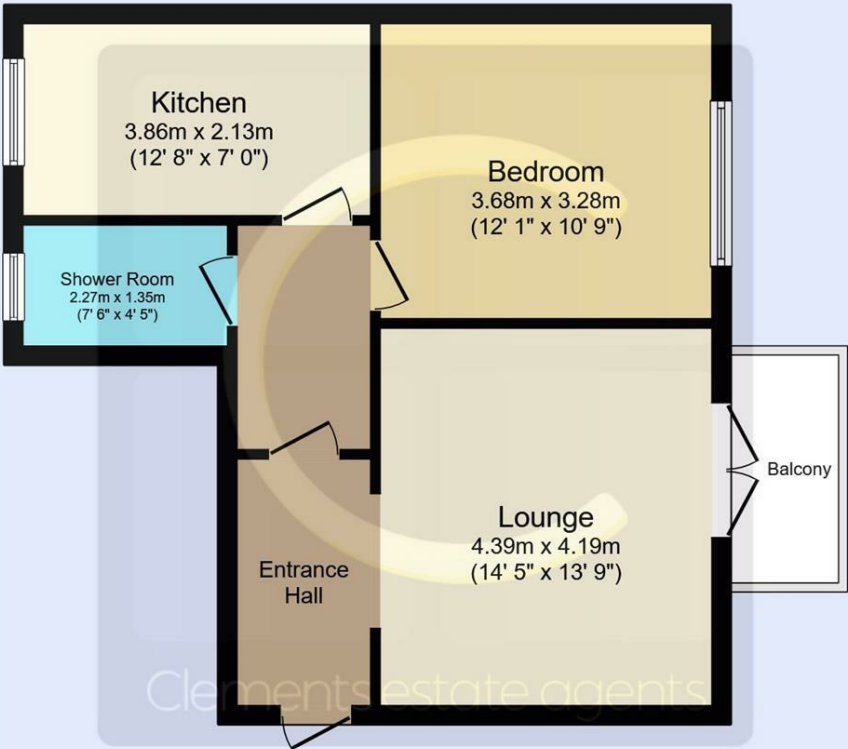


## Shower Room





Floor Plan



Floor Plan

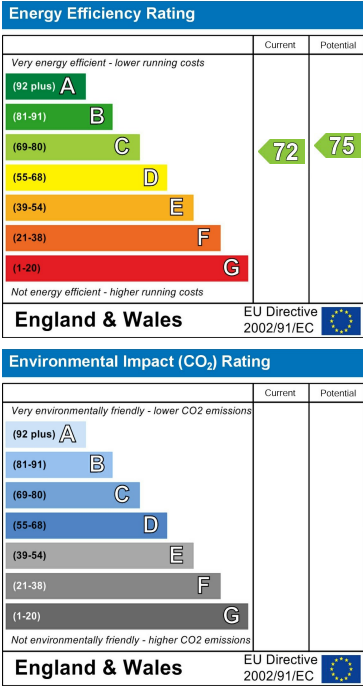
This floor plan is for illustrative purposes only. It is not drawn to scale. Any measurements, floor areas (including any total floor area), openings and orientations are approximate. No details are guaranteed, they cannot be relied upon for any purpose and do not form any part of any agreement. No liability is taken for any error, omission or misstatement. A party must rely upon its own inspection(s). Powered by [www.Propertybox.io](http://www.Propertybox.io)



Area Map



Energy Efficiency Graph



These particulars, whilst believed to be accurate are set out as a general outline only for guidance and do not constitute any part of an offer or contract. Intending purchasers should not rely on them as statements of representation of fact, but must satisfy themselves by inspection or otherwise as to their accuracy. No person in this firms employment has the authority to make or give any representation or warranty in respect of the property.