



## Ramson Rise, Hemel Hempstead, HP1 2DG

### Offers In Excess Of £225,000

Welcome to this charming purpose built first-floor maisonette located in the quiet Cul de Sac of Ramson Rise, Chaulden. This delightful property offers a perfect blend of comfort & convenience, making it an ideal choice for individuals or couples seeking a cosy home.

As you enter, you are greeted by a spacious lounge/diner measuring an impressive 22'6, providing ample space for relaxation and entertaining. The room is filled with natural light, creating a warm & inviting atmosphere. The layout is perfect for both quiet evenings in and lively gatherings with friends.

The maisonette features one well-proportioned bedroom with built in wardrobes and the bathroom is conveniently located, ensuring ease of access for residents and guests alike.

With double glazing & gas central heating throughout, you can enjoy a warm and comfortable environment during the colder months. Additionally, the property benefits from allocated parking, a valuable feature in this sought-after area, providing you with peace of mind and convenience.

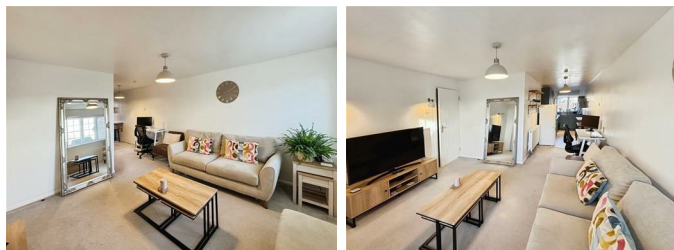
With Hemel Hempstead mainline station nearby with easy access to London Euston & local amenities, parks, & the M1, M25 and A41 road links nearby, you will find everything you need within easy reach.



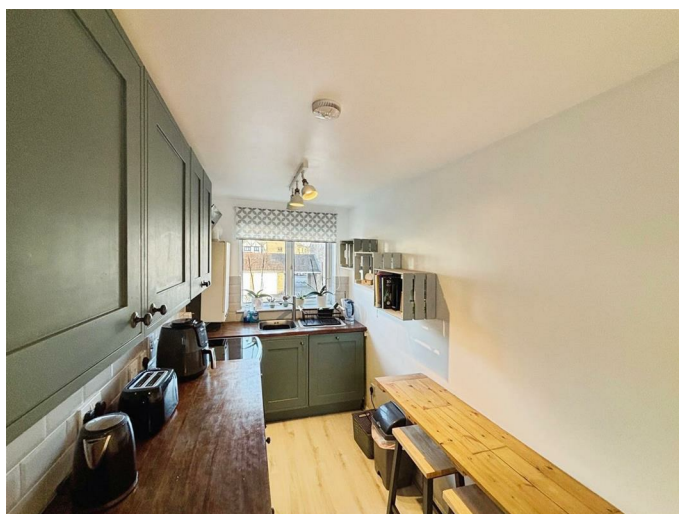
## Entrance Hall

## First Floor Landing

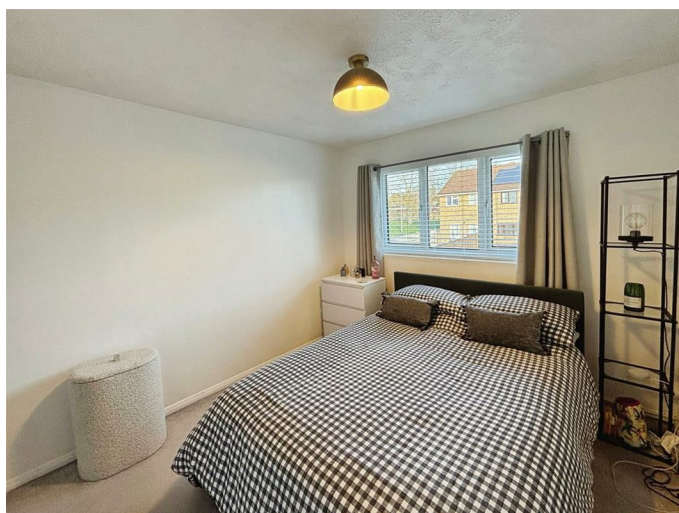
Lounge/Diner 22'6 max x 14'10 max (6.86m max x 4.52m max)



Modern Fitted Kitchen 7'8 x 5'9 (2.34m x 1.75m)



Bedroom 12'3 x 9'3 (3.73m x 2.82m)



## Bathroom



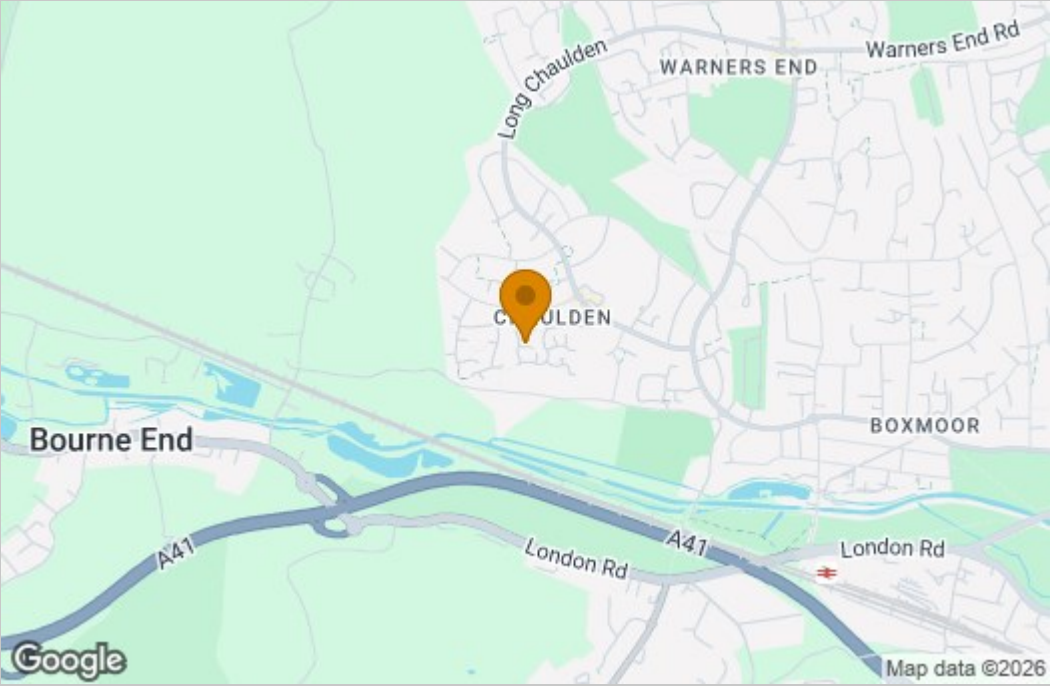
Outside Storage Cupboard

Allocated Parking Space

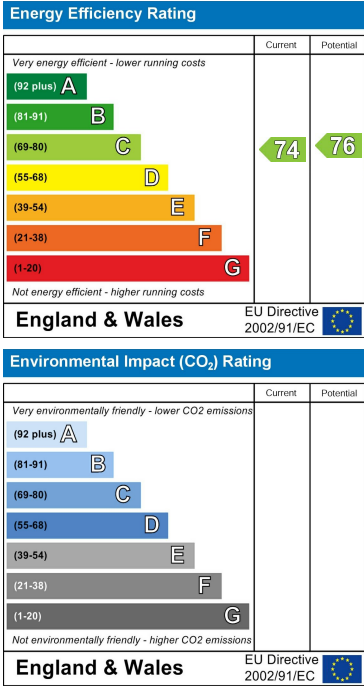
Floor Plan



Area Map



Energy Efficiency Graph



These particulars, whilst believed to be accurate are set out as a general outline only for guidance and do not constitute any part of an offer or contract. Intending purchasers should not rely on them as statements of representation of fact, but must satisfy themselves by inspection or otherwise as to their accuracy. No person in this firms employment has the authority to make or give any representation or warranty in respect of the property.