



## Ebberns Road, Hemel Hempstead, HP3 9QR

### £2,500 PCM

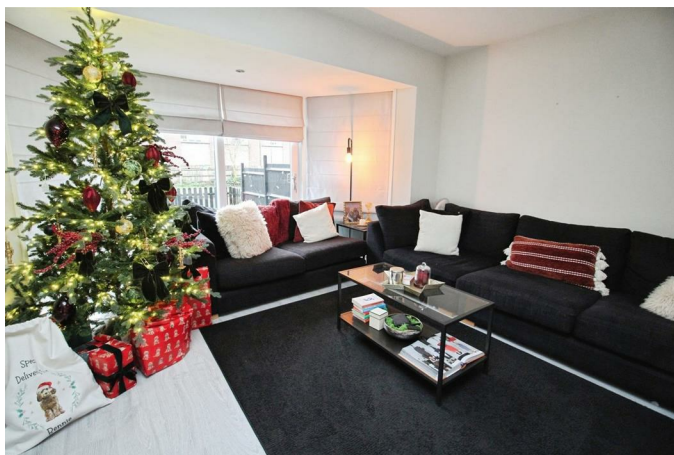
Clements Estate Agents are delighted to market this, rarely available, stunning, three bed, end of terrace property. With it's unique, canal side location, the property is set across three levels, comprising three spacious bedrooms, family bathroom, downstairs WC, kitchen / diner, spacious living room and separate office space. The standout features include, a balcony, to enjoy the views of the canal, driveway parking for TWO cars and a garage. The ground floor presents easy access to the spacious garden, which is made up of a large decking area and low maintenance, green space. This beautiful home is presented in excellent condition and is available to move into from February. Don't miss the chance to make this unique property your next home. Call to view! This property has to be viewed to be fully appreciated.



**Kitchen 12'1" x 11'7" (3.68m x 3.53m)**



**Living Room 14'2" x 11'7" (4.32m x 3.53m)**



**WC**



**Office 13'6" x 8'7" (4.11m x 2.62m)**



**Utility 9'2" x 6'11" (2.79m x 2.11m)**



**Master Bedroom 12'4" x 9'10" (3.76 x 3.00)**



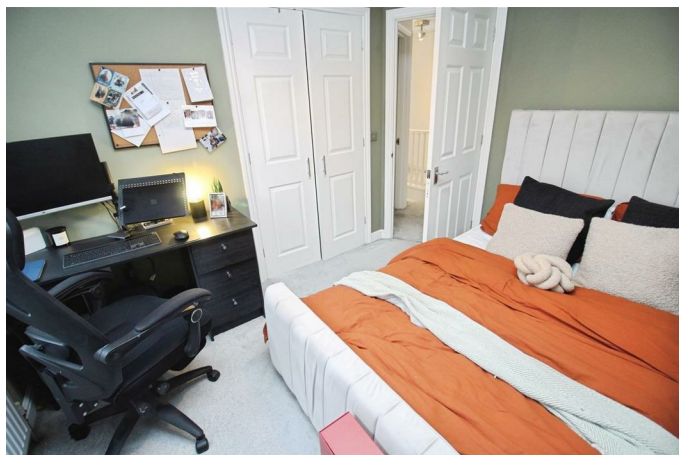
**En-Suite 7'3" x 5'8" (2.21m x 1.73m)**



**Bedroom 3 11'10" x 7'3" (3.61 x 2.21)**



**Bedroom 2 10'9" x 8'11" (3.28m x 2.72m)**



**Garden**



**Bathroom 7'9" x 6'2" (2.36m x 1.88m)**

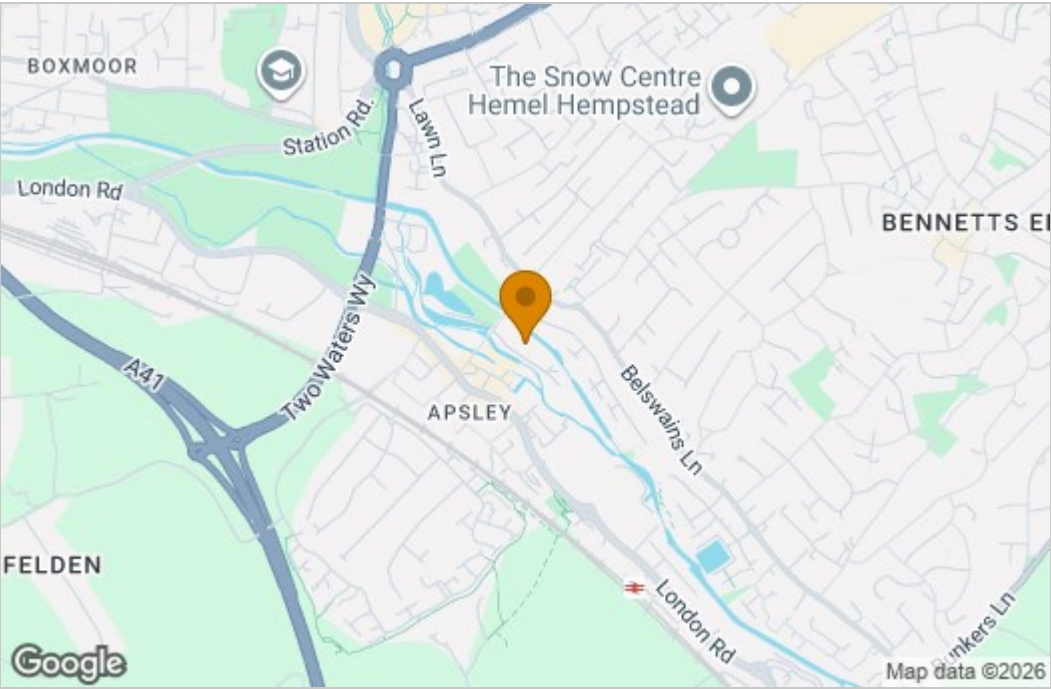




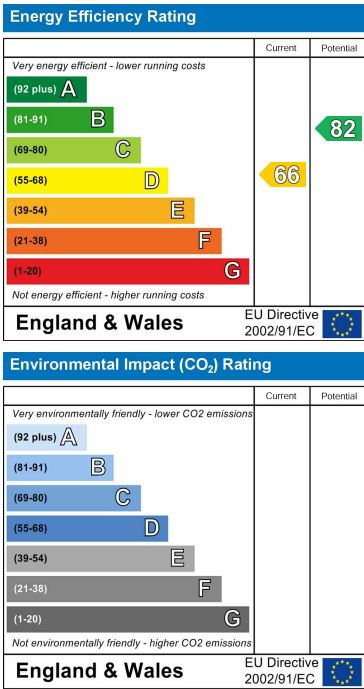
Floor Plan



Area Map



Energy Efficiency Graph



These particulars, whilst believed to be accurate are set out as a general outline only for guidance and do not constitute any part of an offer or contract. Intending purchasers should not rely on them as statements of representation of fact, but must satisfy themselves by inspection or otherwise as to their accuracy. No person in this firm's employment has the authority to make or give any representation or warranty in respect of the property.