

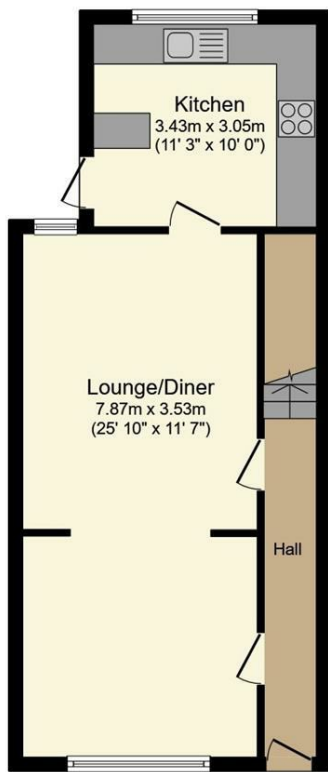


## Ebberts Road, Apsley, HP3

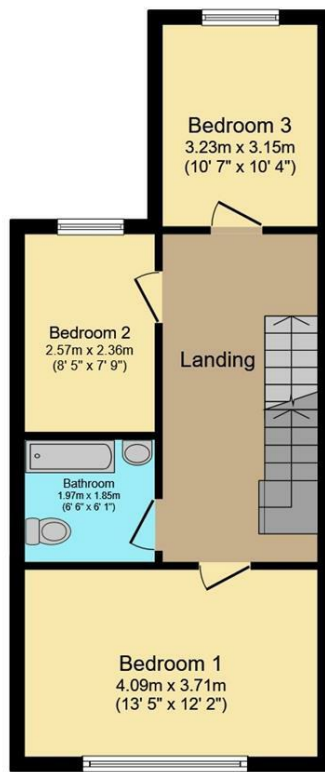
Clements Estate Agents are delighted to offer this superb three bedroom Mid Terrace property offering a good range of features including spacious room sizes, good decorative order, converted loft room, gardens and a sought after Apsley location ideally situated for good local shops, amenities and transport links including Apsley mainline railway station. Available early December. Call to view!

- Semi-detached Property
- Three Bedrooms
- Good Decorative Order
- Spacious Room Sizes
- Very Popular Location
- Available Early December
- Viewing Essential
- Call Now
- Close to the Station
- Unfurnished

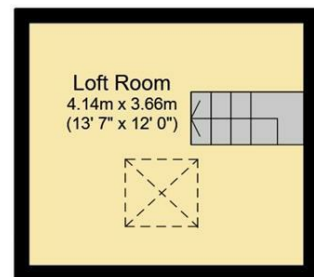
**£1,700 PCM**



**Ground Floor**



**First Floor**



**Second Floor**

Total floor area 102.7 sq.m. (1,105 sq.ft.) approx

This plan is for illustration purposes only and may not be representative of the property. Plan not to scale. Powered by PropertyBox

