



**Cotterells, Hemel Hempstead, HP1 1HZ**  
**£240,000**

Offered with the benefit of NO UPPER CHAIN is this purpose built second floor apartment situated close to the town centre and within easy reach of Hemel Hempstead train station.

Boasting one bedroom, 22'0 open plan lounge/kitchen, modern fitted kitchen, double glazing, allocated parking space and is being sold with a SHARE OF FREEHOLD.



## Communal Hallway

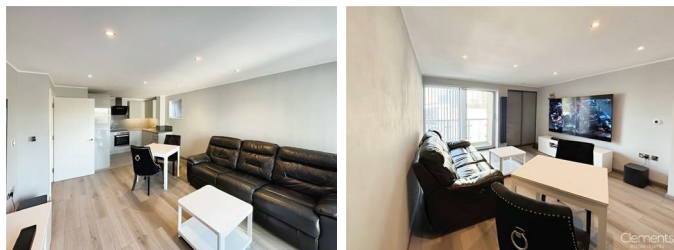
Stairs to all floors

## Entrance Hallway



Door to front, entry phone system, wood flooring built in double cupboard with plumbing for washing machine.

## Open Plan Lounge/Kitchen 22'0 x 12'05 (6.71m x 3.78m)



Double glazed patio door in balcony, TV point, built in storage cupboard and electric radiator.

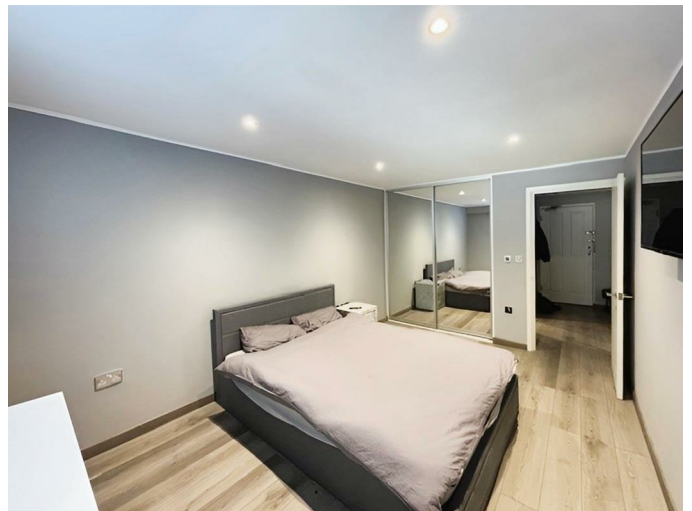
## Balcony

## Fitted Kitchen



Modern fitted kitchen with wall and base units with work surfaces to compliment, double glazed window, electric oven and hob with cooker hood over, 1 1/2 bowl stainless steel sink with drainer, integrated dishwasher, integrated fridge freezer and tiled floor.

## Bedroom 15'1 x 9'07 (4.60m x 2.92m)



Double glazed window, wood flooring and electric radiator.

## Shower Room



Shower cubicle with rain style shower head and shower attachment, low level wc, wash hand basin, heated towel rail and fully tiled walls.

## Allocated Parking

Allocated parking space.

Floor Plan



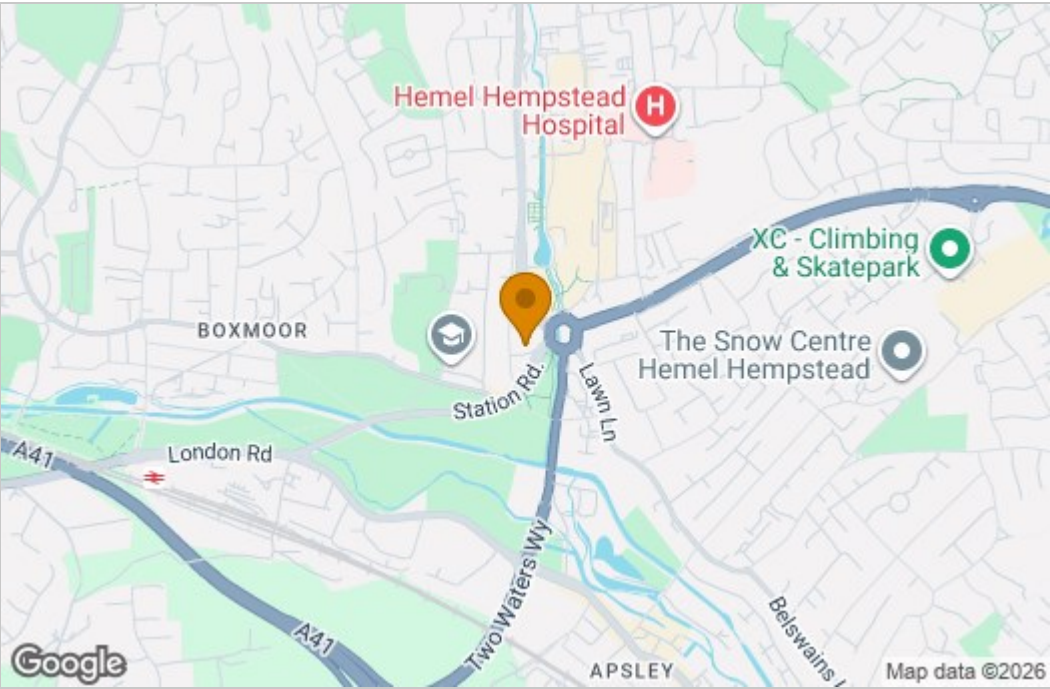
Floor Plan  
Floor area 38.5 m<sup>2</sup> (414 sq.ft.)

TOTAL: 38.5 m<sup>2</sup> (414 sq.ft.)

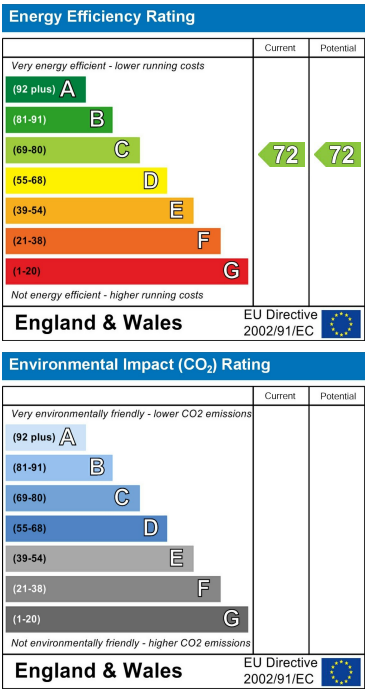
This floor plan is for illustrative purposes only. It is not drawn to scale. Any measurements, floor areas (including any total floor area), openings and orientations are approximate. No details are guaranteed, they cannot be relied upon for any purpose and do not form any part of any agreement. No liability is taken for any error, omission or misstatement. A party must rely upon its own inspection(s). Powered by [www.Propertybox.io](http://www.Propertybox.io)



Area Map



Energy Efficiency Graph



These particulars, whilst believed to be accurate are set out as a general outline only for guidance and do not constitute any part of an offer or contract. Intending purchasers should not rely on them as statements of representation of fact, but must satisfy themselves by inspection or otherwise as to their accuracy. No person in this firms employment has the authority to make or give any representation or warranty in respect of the property.