

Selden Hill, Hemel Hempstead, HP2 4FY

£270,000

Situated in Hemel Hempstead town centre is this well presented purpose built ground floor flat. Boasting two bedrooms, 14'6 living room, 12'4 modern fitted kitchen, gas central heating and allocated parking. Located within easy reach of the local shops, restaurants and travel facilities including Hemel Hempstead Station and the M1, M25 and A41 road links.

Communal Hallway

Entryphone system and stairs to all floors.

Entrance Hall

Front door, laminate flooring and two built in storage cupboard.

Lounge 14'6 x 11'2 (4.42m x 3.40m)



Double glazed window, laminate flooring, wall mounted electric heater, TV point and double glazed french doors to Juliette balcony.

Kitchen 12'4 x 8'10 max (3.76m x 2.69m max)



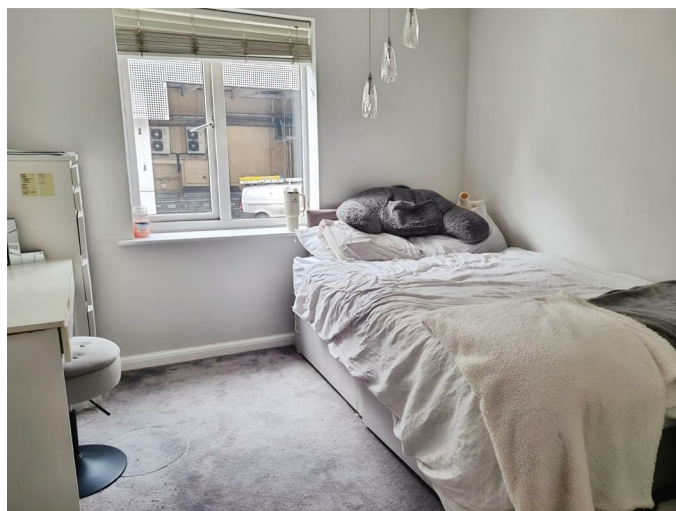
Modern fitted kitchen with wall and base units and work surfaces to compliment, stainless steel sink with drainer, mixer taps and tiled splashbacks, integrated microwave/oven, electric oven, electric hob with cooker hood over, island with base units under, plumbing for dishwasher and washing machine, built in wine rack and double glazed window.

Bedroom One 10'2 to wardrobes x 10'1 (3.10m to wardrobes x 3.07m)



Double glazed window, wall mounted electric heater and built in wardrobe.

Bedroom Two 10'1 x 7'2 (3.07m x 2.18m)



Double glazed window and wall mounted electric heater.

Bathroom



Panelled bath with mixer taps and shower over, pedestal wash hand basin, low level wc, heated towel rail, part tiling and extractor fan.

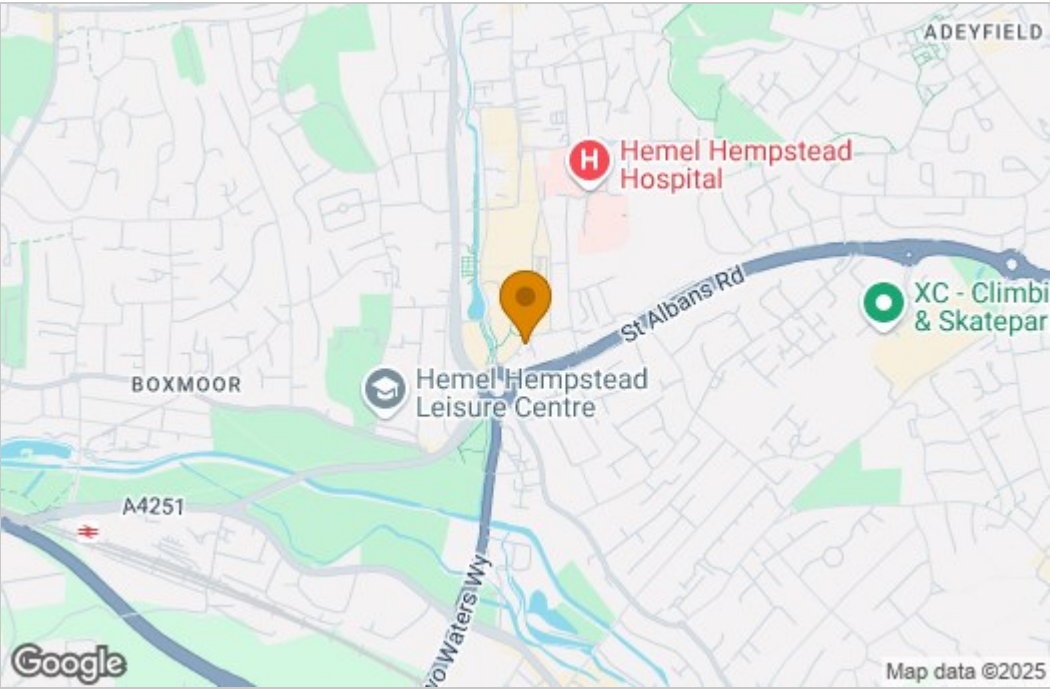
Allocated Parking

Allocated parking space.

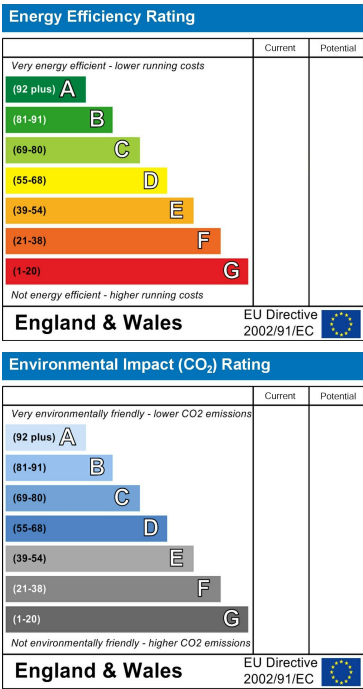
Floor Plan



Area Map



Energy Efficiency Graph



These particulars, whilst believed to be accurate are set out as a general outline only for guidance and do not constitute any part of an offer or contract. Intending purchasers should not rely on them as statements of representation of fact, but must satisfy themselves by inspection or otherwise as to their accuracy. No person in this firm's employment has the authority to make or give any representation or warranty in respect of the property.