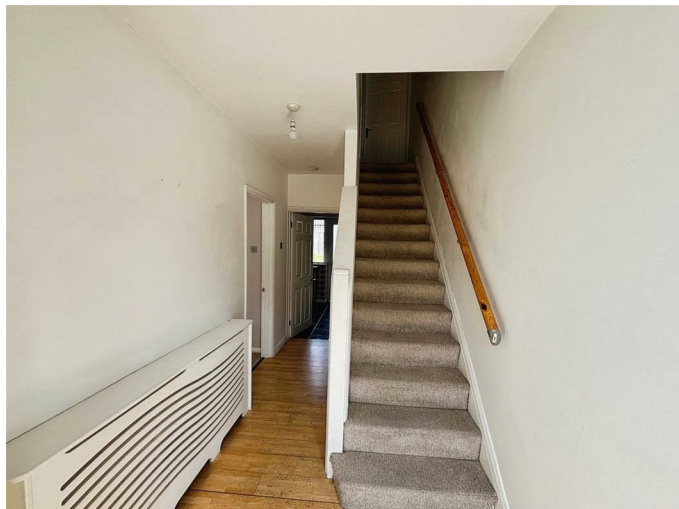


Entrance Hall



Double glazed front door, double glazed window, radiator and understairs cupboard.

Living Room 12'9 x 11'10 max (3.89m x 3.61m max)



Double glazed window, radiator, cupboard, coving and fireplace.

Dining Room 10'5 x 8'2 (3.18m x 2.49m)



Double glazed window, coving and radiator.

Kitchen 9'11 x 8'11 (3.02m x 2.72m)



Fitted kitchen comprising wall and base units with wall and base units, 1 1/2 bowl stainless steel sink with drainer and tiled splashbacks, gas hob with cooker hood over, electric oven, central heating boiler, plumbing for washing machine, two double glazed windows and double glazed door to garden.

Landing

Loft access.

Bedroom One 12'5 x 10'5 (3.78m x 3.18m)



Double glazed window, radiator and cupboard.

Bedroom Two 12'2 x 10'9 (3.71m x 3.28m)



Double glazed window, radiator and cupboard.

Bedroom Three 8'10 x 7'9 (2.69m x 2.36m)



Double glazed window, radiator and cupboard.

Bathroom



Two double glazed windows, panelled bath with mixer taps and shower attachment, shower, wash hand basin with vanity unit, low level wc with hidden cistern, heated towel rail, tiled floor and part tiled walls

Front Garden

Paved for off road parking.

Rear Garden



Patio area, laid to lawn and side access.

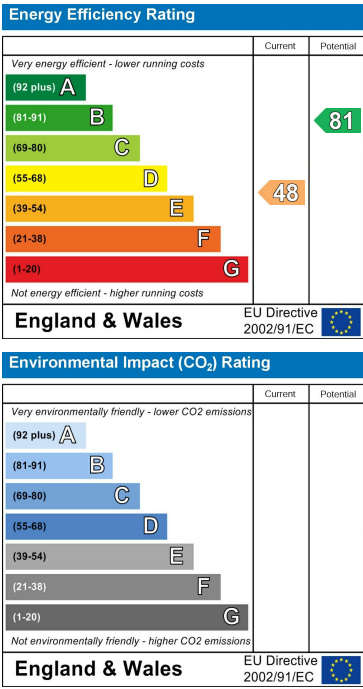
Floor Plan



Area Map



Energy Efficiency Graph



These particulars, whilst believed to be accurate are set out as a general outline only for guidance and do not constitute any part of an offer or contract. Intending purchasers should not rely on them as statements of representation of fact, but must satisfy themselves by inspection or otherwise as to their accuracy. No person in this firms employment has the authority to make or give any representation or warranty in respect of the property.