



## Datchet Close, Hemel Hempstead, HP2 7JY

### **£1,550 Per Calendar Month**

Welcome to this charming first-floor flat located in the desirable area of Datchet Close, . This purpose-built apartment boasts a well-thought-out layout, featuring two generously sized bedrooms and a comfortable open plan reception room, perfect for relaxation or entertaining guests.

The flat is presented in excellent decorative order, ensuring that you can move in with ease and enjoy your new home from day one. The spacious room sizes create a welcoming atmosphere, allowing for a variety of furniture arrangements to suit your personal style. With its blend of space, style, and convenience, this property is not to be missed. We invite you to come and experience the charm of this lovely flat in Hemel Hempstead.



## COMMUNAL ENTRANCE

FRONT DOOR TO :

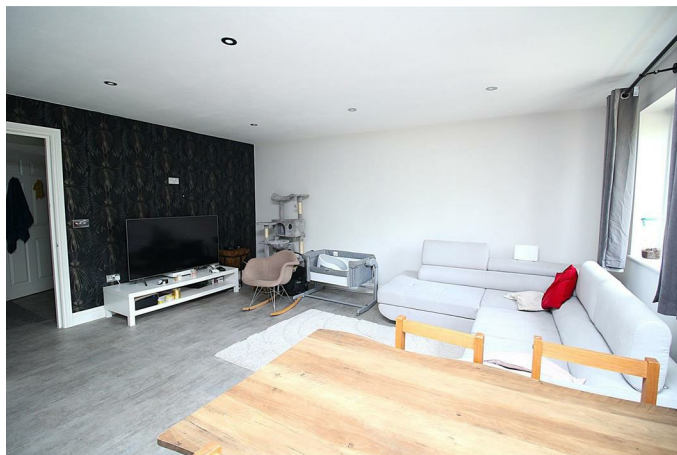
ENTRANCE HALLWAY :

OPEN PLAN LOUNGE / DINING AREA / KITCHEN  
18'1 x 16'5 (5.51m x 5.00m)

## LOUNGE AREA



## DINING AREA



## KITCHEN AREA



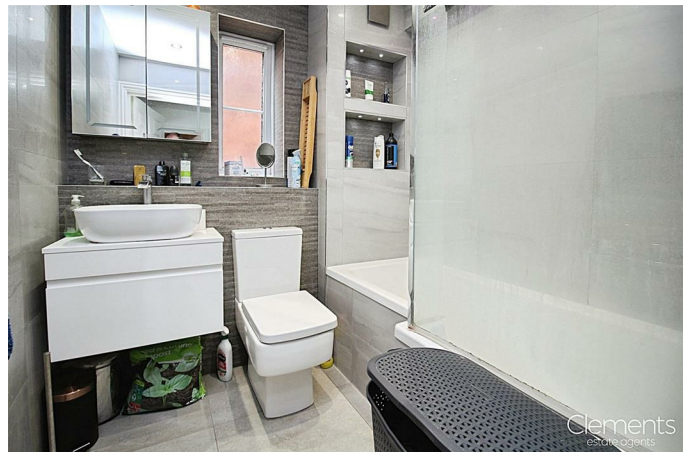
## BEDROOM ONE 11'6 x 10'2 (3.51m x 3.10m)



## BEDROOM TWO 10'10 x 8'2 (3.30m x 2.49m)



## BATHROOM 9'8 x 5'2 (2.95m x 1.57m)



**OUTSIDE**

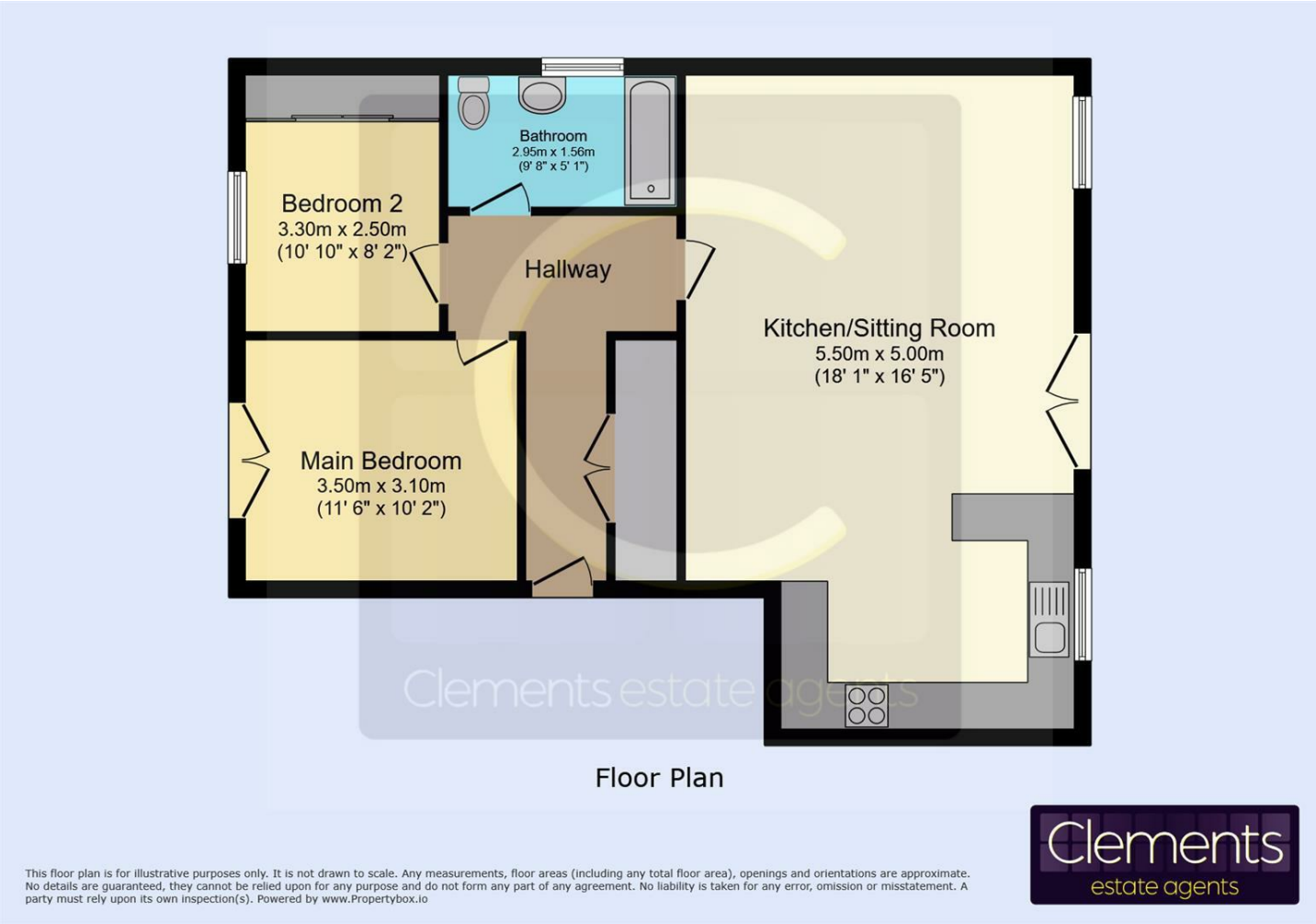


**PARKING**





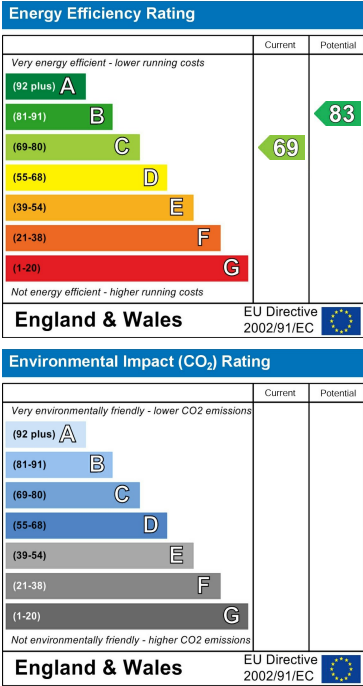
Floor Plan



Area Map



Energy Efficiency Graph



These particulars, whilst believed to be accurate are set out as a general outline only for guidance and do not constitute any part of an offer or contract. Intending purchasers should not rely on them as statements of representation of fact, but must satisfy themselves by inspection or otherwise as to their accuracy. No person in this firms employment has the authority to make or give any representation or warranty in respect of the property.