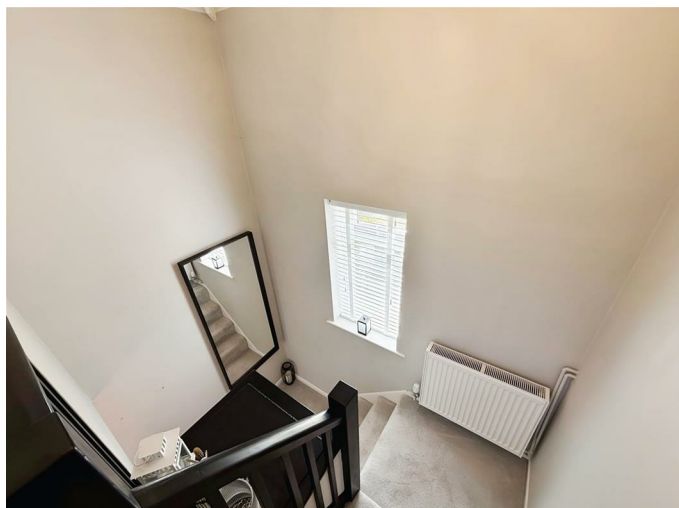




Bedmond Road,, Hemel Hempstead, HP3 8LJ
£365,000

Located close to Leverstock Green Village centre is this character first floor maisonette converted from a Victorian pub. Boasting two bedrooms, 15'7 living room, modern fitted kitchen, gas central heating, double glazing, re fitted bathroom suite, two allocated parking spaces, garage and own private rear garden. Situated within easy reach of the local shops, cricket pitch and travel facilities including the M1 and M25 road links.

Entrance Hall



Door to front and stairs to first floor.

First Floor Landing



Double glazed window, airing cupboard, cupboard housing boiler and loft access.

Living Room 15'7 x 10'4 (4.75m x 3.15m)



Two double glazed windows, TV point and radiator.

Kitchen 10'3 x 7'0 (3.12m x 2.13m)



Fitted kitchen comprising wall and base units with work surfaces to compliment, electric oven, electric hob with cooker hood over, double glazed window, radiator, pantry and plumbing for washing machine.

Bedroom One 11'2 x 9'2 (3.40m x 2.79m)



Double glazed window and radiator.

Bedroom Two 8'10 x 7'2 (2.69m x 2.18m)



Double glazed window and radiator.

Bathroom



Double glazed window, panelled bath with mixer taps and shower over, wash hand basin with vanity unit, fully tiled walls, low level wc and heated towel rail.

Garage



Off Road Parking

Two allocated parking spaces.

Garden



Own private garden which is laid to lawn with flower and shrub borders and outside storage cupboard.

Floor Plan

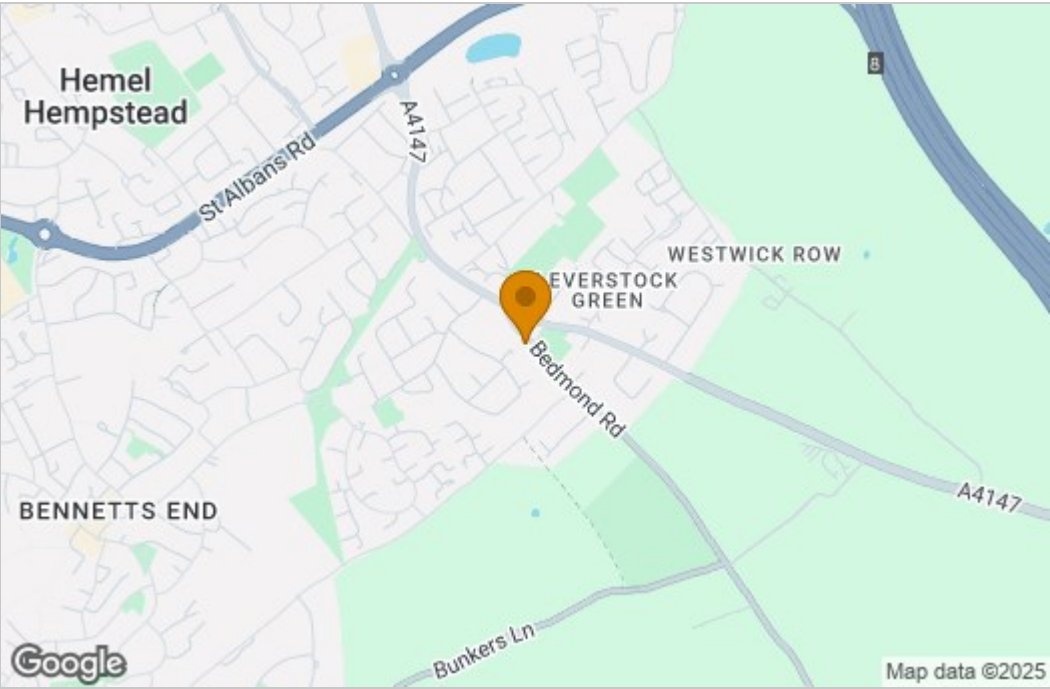


Floor Plan

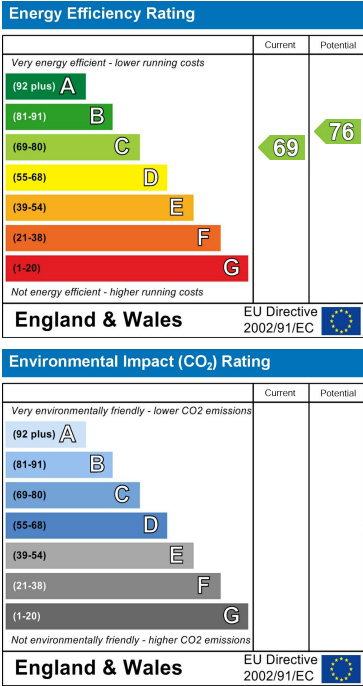
This floor plan is for illustrative purposes only. It is not drawn to scale. Any measurements, floor areas (including any total floor area), openings and orientations are approximate. No details are guaranteed, they cannot be relied upon for any purpose and do not form any part of any agreement. No liability is taken for any error, omission or misstatement. A party must rely upon its own inspection(s). Powered by www.Propertybox.io



Area Map



Energy Efficiency Graph



These particulars, whilst believed to be accurate are set out as a general outline only for guidance and do not constitute any part of an offer or contract. Intending purchasers should not rely on them as statements of representation of fact, but must satisfy themselves by inspection or otherwise as to their accuracy. No person in this firms employment has the authority to make or give any representation or warranty in respect of the property.