



Alldicks Road, Hemel Hempstead, HP3 9JJ
Asking Price £360,000

Clements Estate Agents are pleased to offer for sale this deceptively spacious two double bedroom Semi-Detached property situated in this popular HP3 location. Although some updating is required the property offers good sized rooms including an open plan kitchen diner, downstairs cloakroom, off street parking & a courtyard style garden. No Chain.

A deceptively spacious two double bedroom Semi-Detached property situated in this popular location close to good local shops and amenities. Although some updating is required the property offers good sized rooms including an open plan kitchen diner, downstairs cloakroom, off street parking and a courtyard style garden.

PORCH

Door to front

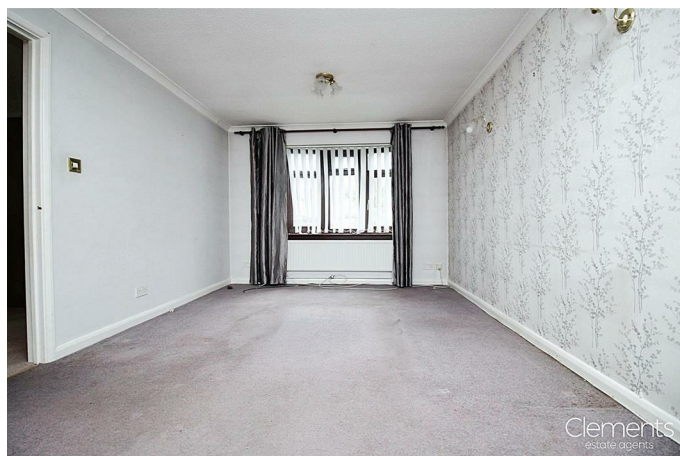
ENTRANCE HALLWAY

Understairs cupboard and stairs to first floor.

CLOAKROOM

Low level WC and wash hand basin.

LOUNGE 15'3 x 10'8 (4.65m x 3.25m)



Double glazed window and double doors to dining room.

OPEN PLAN KITCHEN DINER

KITCHEN AREA 9'9 x 9'7 (2.97m x 2.92m)



Wall and base units with work surfaces to compliment and tiled splash backs, gas hob with cooker hood over, electric oven,

stainless steel sink and drainer. double glazed window and plumbing for washing machine.

DINING AREA 10'4 x 8 (3.15m x 2.44m)



Double glazed patio door to garden and radiator.

FIRST FLOOR LANDING

Storage cupboard.

BEDROOM ONE 15'2 x 10'10 (4.62m x 3.30m)



Two double glazed windows and radiator.

BEDROOM TWO 11'9 x 10'4 (3.58m x 3.15m)



Double glazed window, storage cupboards and radiator.

SHOWER ROOM



Double glazed window, shower cubicle, wash hand basin with vanity unit, low level wc and tiling.

OUTSIDE



FRONT GARDEN WITH OUTSIDE STORAGE & PARKING

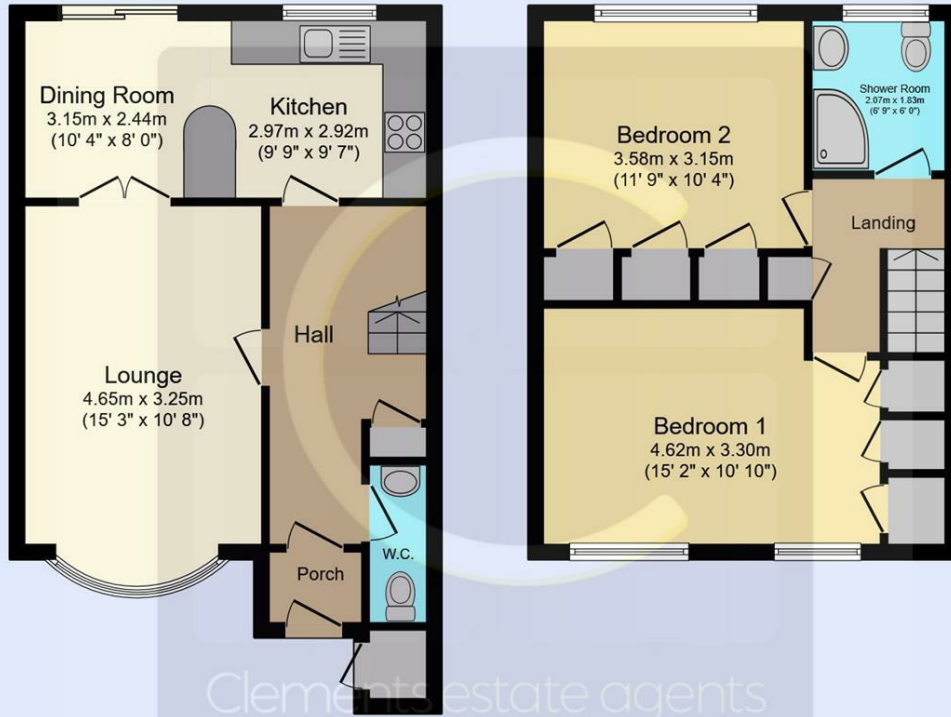
Paved for off road parking, laid to lawn flower and shrubs.

COURT YARD STYLE REAR GARDEN



Paved with side access

Floor Plan



Ground Floor
 Floor area 43.7 m² (471 sq.ft.)

First Floor
 Floor area 39.6 m² (426 sq.ft.)

TOTAL: 83.3 m² (897 sq.ft.)

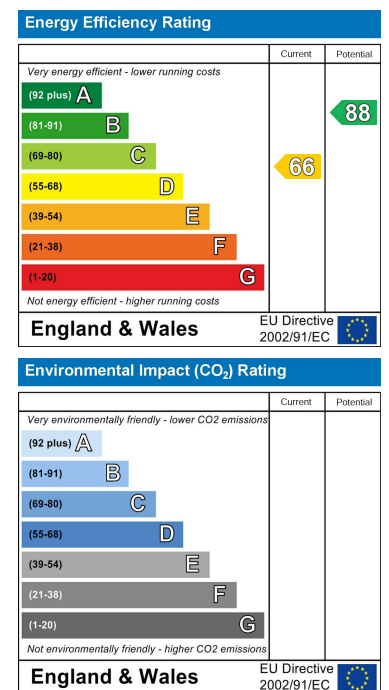
This floor plan is for illustrative purposes only. It is not drawn to scale. Any measurements, floor areas (including any total floor area), openings and orientations are approximate. No details are guaranteed, they cannot be relied upon for any purpose and do not form any part of any agreement. No liability is taken for any error, omission or misstatement. A party must rely upon its own inspection(s). Powered by www.Propertybox.io



Area Map



Energy Efficiency Graph



These particulars, whilst believed to be accurate are set out as a general outline only for guidance and do not constitute any part of an offer or contract. Intending purchasers should not rely on them as statements of representation of fact, but must satisfy themselves by inspection or otherwise as to their accuracy. No person in this firm's employment has the authority to make or give any representation or warranty in respect of the property.