



Clements estate agents



Cotterells

, Hemel Hempstead, HP1 1AS

Located in the Town Centre in KD Tower is this ninth floor apartment. Offered in excellent decorative order and boasting two bedrooms, 20'2 lounge, modern fitted kitchen with Island unit, balcony, en suite to bedroom one, allocated parking and within easy reach of Hemel Hempstead Station.

Offers In Excess Of £285,000

79 KD Tower Cottrells

, Hemel Hempstead, HP1 1AS



- Purpose Built Floor Apartment
- 20'2 Living Room with Balcony
- Gas Central Heating
- Ninth Floor
- Modern Fitted Kitchen
- Allocated Parking
- Two Bedrooms
- Double Glazing

Communal Hall

Allocated Parking

Entrance Hallway

Lounge

20'2 x 12'2 (6.15m x 3.71m)

Kitchen

8'3 x 7'8 (2.51m x 2.34m)

Balcony

Bedroom One

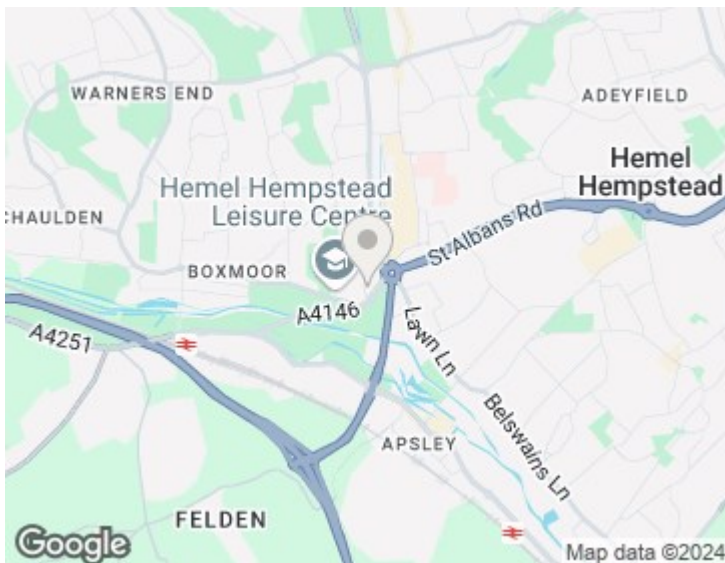
11'8 x 9'8 (3.56m x 2.95m)

En Suite

Bedroom Two

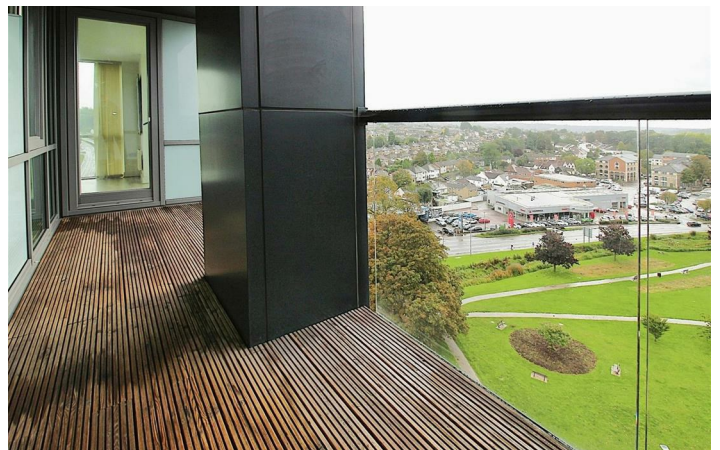
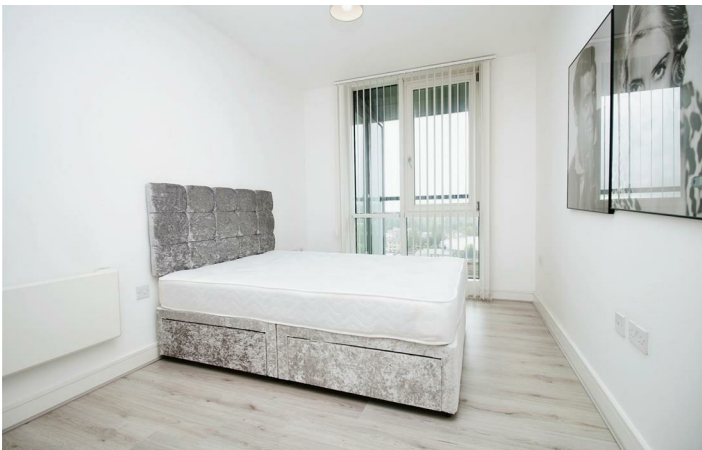
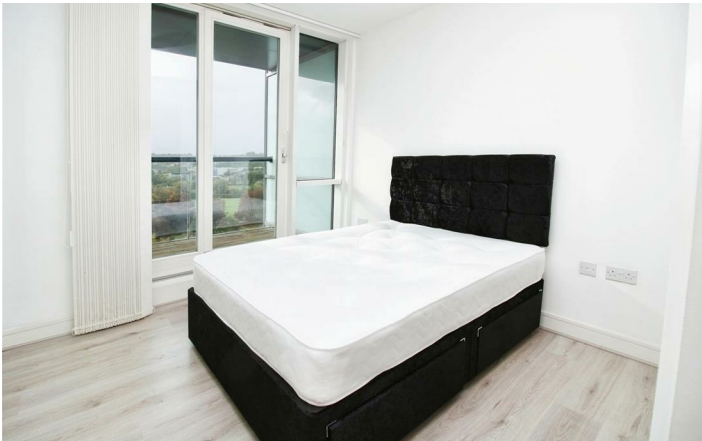
12'5 x 8'6 (3.78m x 2.59m)

Bathroom

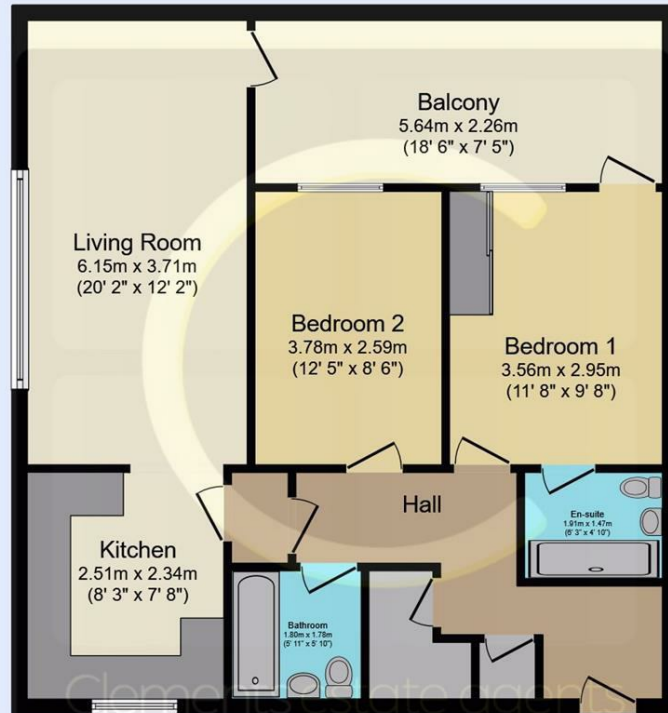


Energy Efficiency Rating

	Current	Potential
Very energy efficient - lower running costs		
(92 plus) A		
(81-91) B		
(69-80) C	76	
(55-68) D		
(39-54) E		
(21-38) F		
(1-20) G		
Not energy efficient - higher running costs		
England & Wales	EU Directive 2002/91/EC	



Floor Plan



Floor Plan
Floor area 82.4 m² (887 sq.ft.)

TOTAL: 82.4 m² (887 sq.ft.)

This floor plan is for illustrative purposes only. It is not drawn to scale. Any measurements, floor areas (including any total floor area), openings and orientations are approximate. No details are guaranteed, they cannot be relied upon for any purpose and do not form any part of any agreement. No liability is taken for any error, omission or misstatement. A party must rely upon its own inspection(s). Powered by www.Propertybox.io



These particulars, whilst believed to be accurate are set out as a general outline only for guidance and do not constitute any part of an offer or contract. Intending purchasers should not rely on them as statements of representation of fact, but must satisfy themselves by inspection or otherwise as to their accuracy. No person in this firm's employment has the authority to make or give any representation or warranty in respect of the property.

