



Rucklers Lane, Kings Langley, WD4 8AX
Price £450,000

Offered with NO UPPER CHAIN is this character semi detached home located in the highly sought after village of Kings Langley. Boasting two double bedrooms, living room, dining room, newly fitted kitchen and bathroom suite, gas central heating, double glazing and is within easy reach of Apsley Train Station.

Front

Pathway to front door and side access gate.

Entrance

Stairs to first floor, doors to living room and dining room.

Living Room 11'11 x 10'11 (3.63m x 3.33m)



Double glazed bay window, radiator, feature brick fireplace with log burner.

Dining Room 11'10 x 12'00 (3.61m x 3.66m)



Dual aspect with two double glazed sash windows, radiator, understairs cupboard

Kitchen 7'04 x 13'11 (2.24m x 4.24m)



Fitted kitchen with wall and base units with work surfaces to compliment, gas hob with cooker hood over, electric oven, plumbing for washing machine, stainless steel sink with drainer and mixer tap, part tiled, two double glazed windows, door to garden.

Landing

Stairs from ground floor, doors to bedroom one and bedroom two.

Bedroom One 11'10 x 11'00 (3.61m x 3.35m)



Double glazed window and radiator.

Bedroom Two 11'10 x 11'10 (3.61m x 3.61m)



Dual aspect with two double glazed windows, radiator and door to bathroom.

Bathroom 8'10 x 7'05 (2.69m x 2.26m)

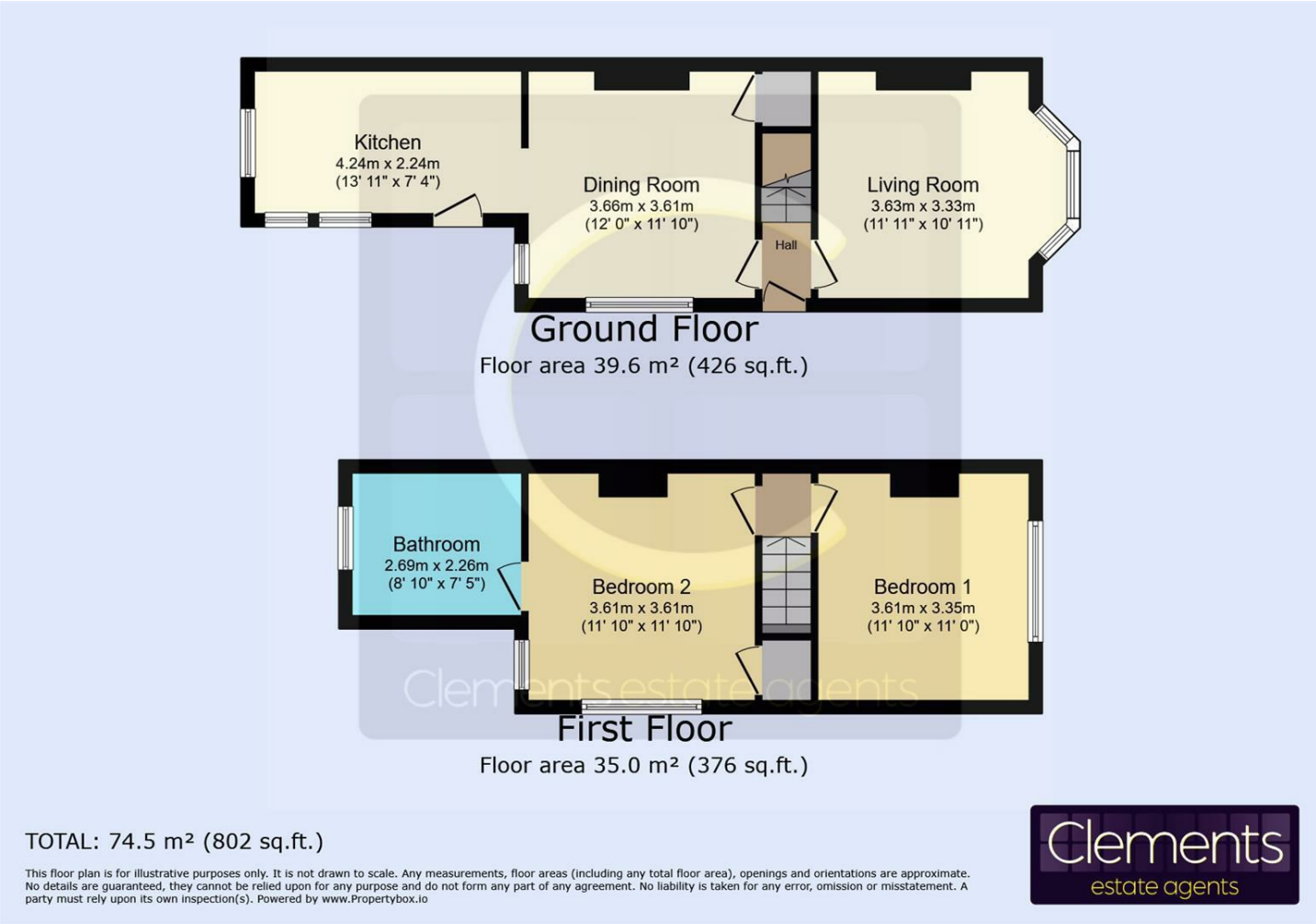


Frosted double glazed window, bath with mixer taps and shower attachment over, low level WC, wash hand basin and part tiled.

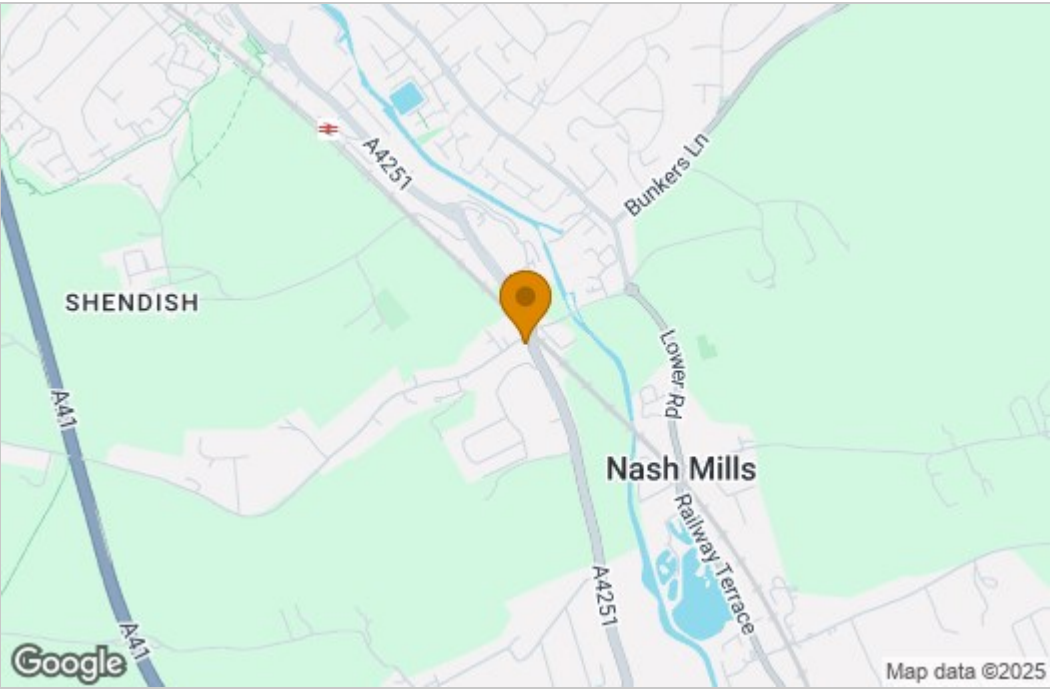
Garden

Laid to lawn with flower and shrub borders.

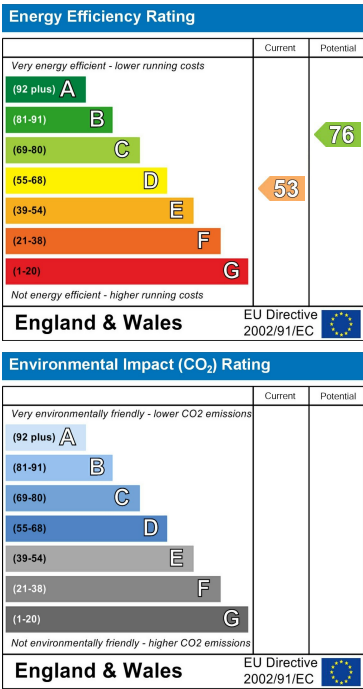
Floor Plan



Area Map



Energy Efficiency Graph



These particulars, whilst believed to be accurate are set out as a general outline only for guidance and do not constitute any part of an offer or contract. Intending purchasers should not rely on them as statements of representation of fact, but must satisfy themselves by inspection or otherwise as to their accuracy. No person in this firms employment has the authority to make or give any representation or warranty in respect of the property.