



Puller Road, Hemel Hempstead, HP1 1QN

£1,595 PCM

Clements are delighted to offer this character two double bedroom Mid Terrace property situated in the heart of Boxmoor. The property offers excellent decorative order with a modern fitted kitchen and bathroom, good sized garden, on street parking and a convenient location set within easy reach of good local shops, amenities and transport links including Hemel Hempstead station with links to London Euston.

A character two double bedroom Mid Terrace property situated in the heart of Boxmoor. The property offers excellent decorative order with a modern fitted kitchen and bathroom, good sized garden, on street parking and a convenient location set within easy reach of good local shops, amenities and transport links including Hemel Hempstead station.

FRONT GARDEN

PORCH

LOUNGE 12'1 x 11'3 (3.68m x 3.43m)



KITCHEN / DINER 11'2 x 10'5 (3.40m x 3.18m)



BATHROOM 6'5 x 4'11 (1.96m x 1.50m)



FIRST FLOOR LANDING

BEDROOM ONE 11'3 x 8'3 (3.43m x 2.51m)



BEDROOM TWO 10 x 8'6 (3.05m x 2.59m)



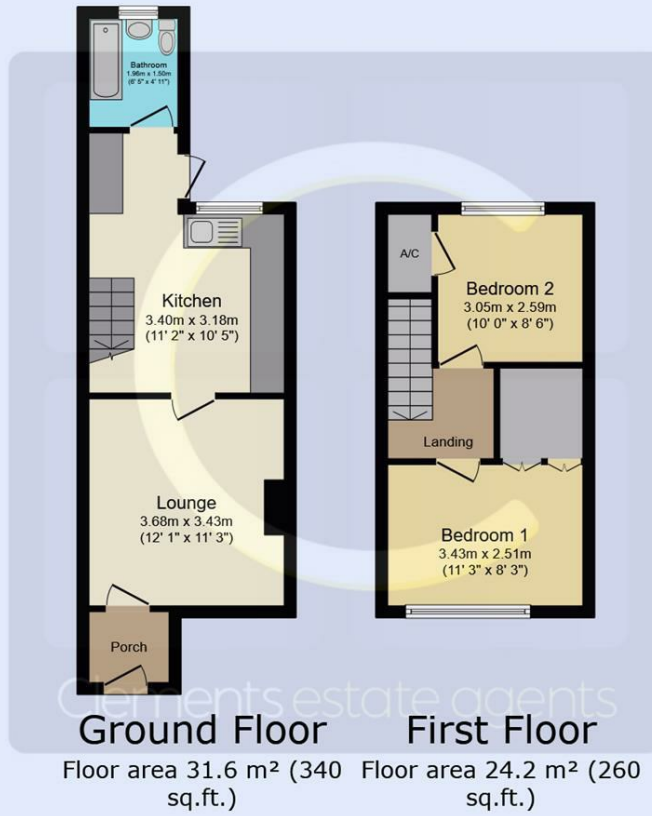
OUTSIDE



REAR GARDEN



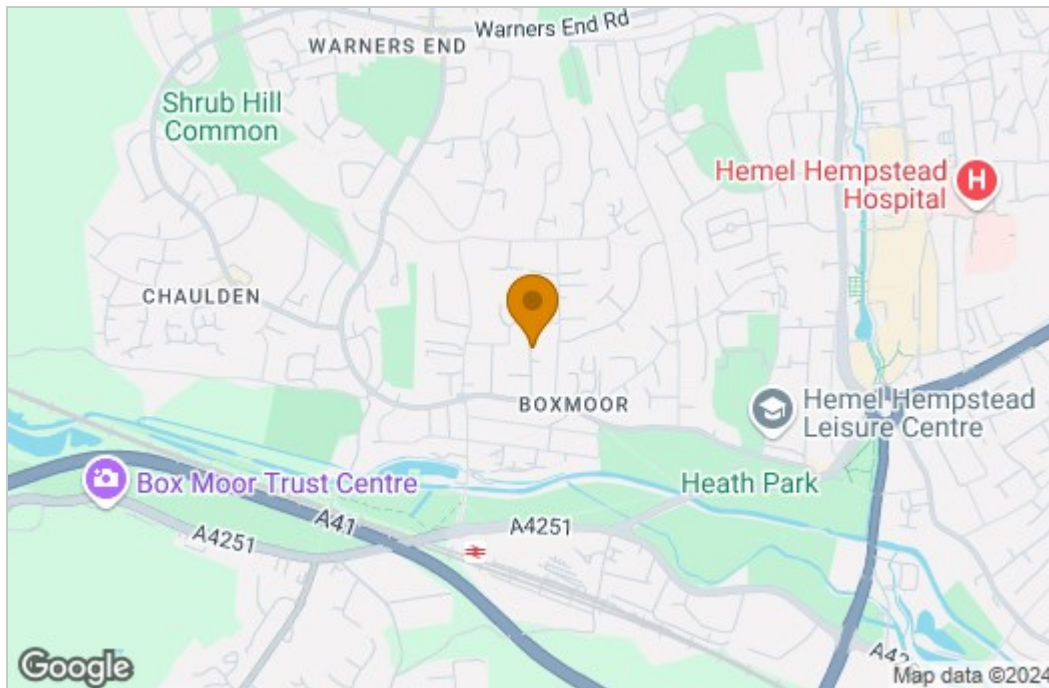
Floor Plan



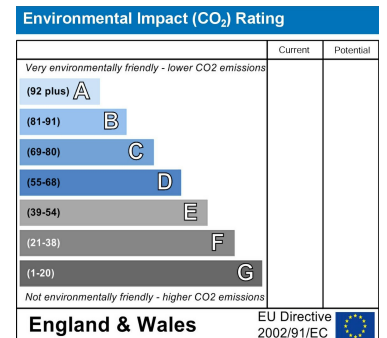
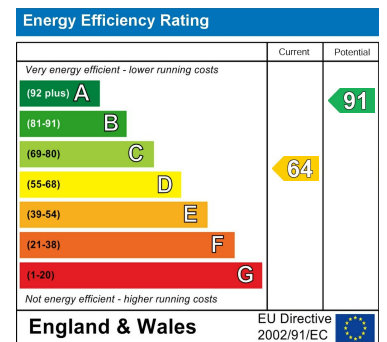
This floor plan is for illustrative purposes only. It is not drawn to scale. Any measurements, floor areas (including any total floor area), openings and orientations are approximate. No details are guaranteed, they cannot be relied upon for any purpose and do not form any part of any agreement. No liability is taken for any error, omission or misstatement. A party must rely upon its own inspection(s). Powered by www.Propertybox.io



Area Map



Energy Efficiency Graph



These particulars, whilst believed to be accurate are set out as a general outline only for guidance and do not constitute any part of an offer or contract. Intending purchasers should not rely on them as statements of representation of fact, but must satisfy themselves by inspection or otherwise as to their accuracy. No person in this firm's employment has the authority to make or give any representation or warranty in respect of the property.