



Clements estate agents



Alexandra Road, Hemel Hempstead, HP2 4AX
Offers Over £220,000

Clements Estate Agents are very pleased to offer this convenient two bedroom ground floor flat situated just a short walk to Hemel Hempstead's Town Centre. The property benefits good decorative order, electric heating, permit parking, an outside communal seating area and the added benefit of No Upper Chain! Call Now, we hold keys...

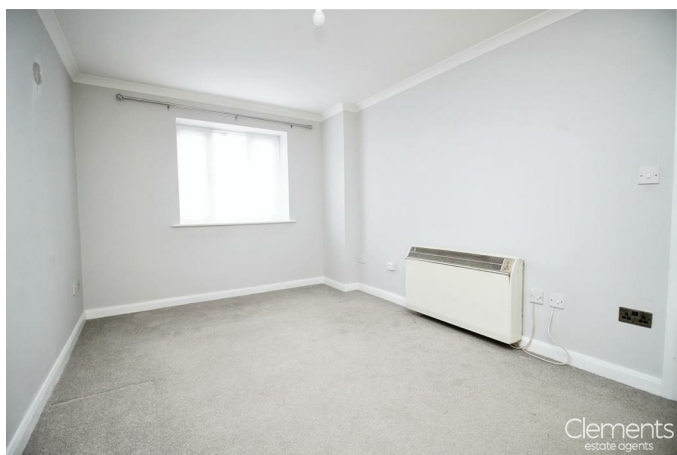
A conveniently located two bedroom ground floor flat situated just a short walk to Hemel Hempstead's Town Centre with its many shops, amenities and transport links. The property benefits good decorative order, electric heating, permit parking, an outside communal seating area and the added benefit of No Upper Chain! Viewing Essential!

COMMUNAL FRONT DOOR TO :

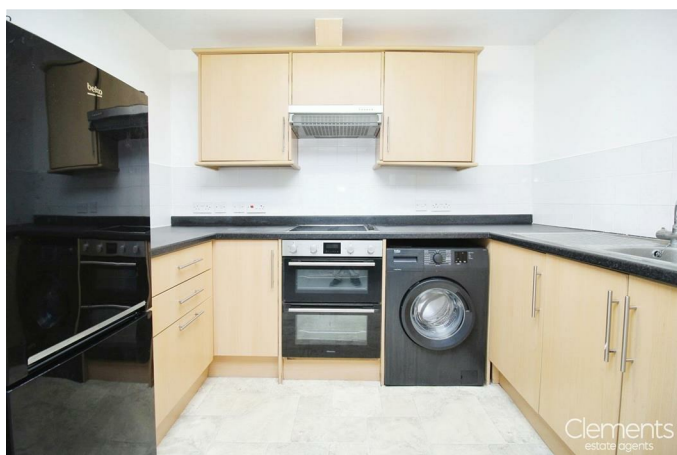
FRONT DOOR TO :

ENTRANCE HALLWAY

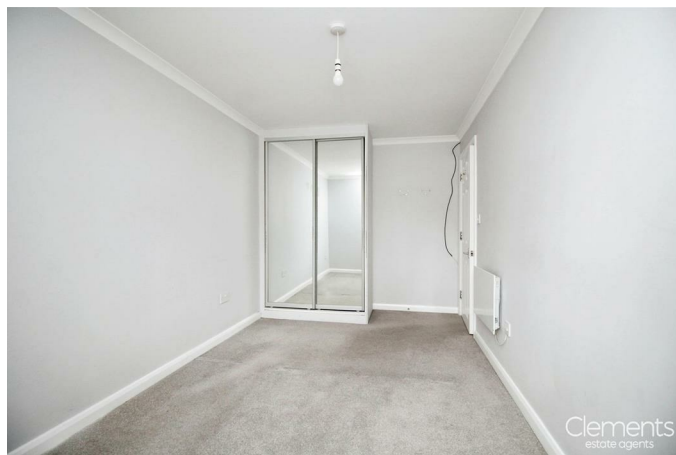
LOUNGE/DINER 14'2 x 9'3 (4.32m x 2.82m)



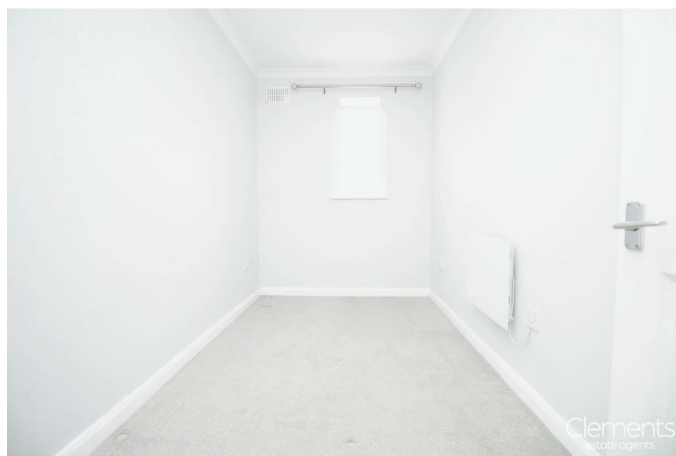
KITCHEN 9'2 x 6'8 (2.79m x 2.03m)



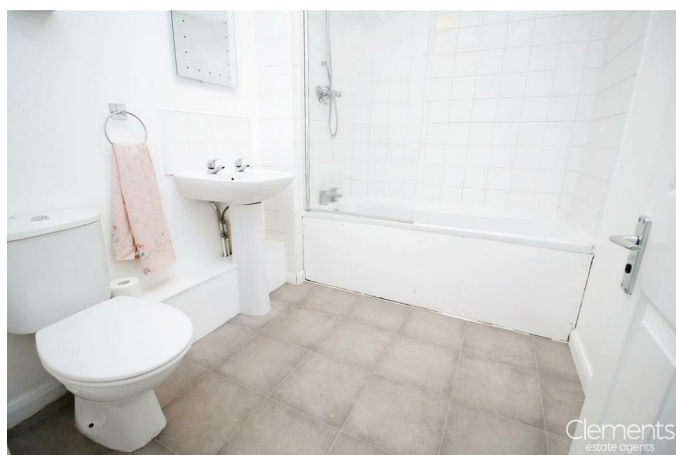
BEDROOM ONE 14'2 x 8'0 (4.32m x 2.44m)



BEDROOM TWO 10'5 x 5'9 (3.18m x 1.75m)



BATHROOM



OUTSIDE



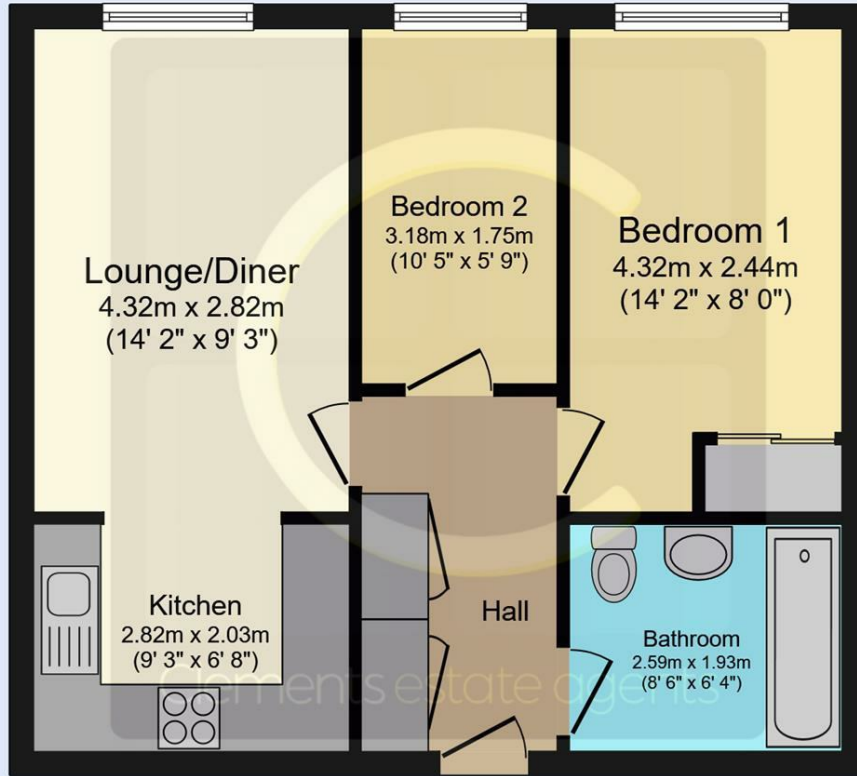
COMMUNAL GARDENS



PARKING TO REAR



Floor Plan



TOTAL: 46.5 m² (501 sq.ft.)

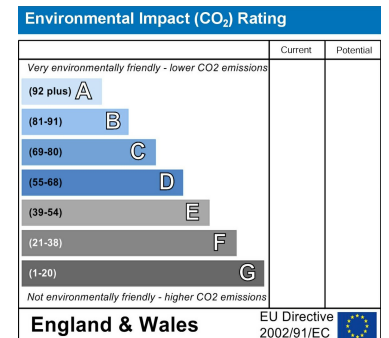
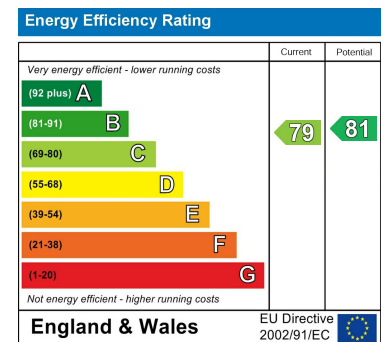
This floor plan is for illustrative purposes only. It is not drawn to scale. Any measurements, floor areas (including any total floor area), openings and orientations are approximate. No details are guaranteed, they cannot be relied upon for any purpose and do not form any part of any agreement. No liability is taken for any error, omission or misstatement. A party must rely upon its own inspection(s). Powered by www.Propertybox.io



Area Map



Energy Efficiency Graph



These particulars, whilst believed to be accurate are set out as a general outline only for guidance and do not constitute any part of an offer or contract. Intending purchasers should not rely on them as statements of representation of fact, but must satisfy themselves by inspection or otherwise as to their accuracy. No person in this firm's employment has the authority to make or give any representation or warranty in respect of the property.

45 Marlowes, Hemel Hempstead, Hertfordshire, HP1 1LD

Tel: 01442 214151 Email: sales@clementsestateagents.co.uk <https://www.clementsestateagents.co.uk>