



The Flintings, Hemel Hempstead, HP2 6JD

Offers In Excess Of £585,000

Clements are delighted to market this exceptional Semi Detached family home in the idyllic village setting of Gaddesden Row. With an abundance of character the house offers spectacular countryside views that must be viewed to be fully appreciated. Immaculately presented throughout and comprising: entrance hallway, dual aspect kitchen/breakfast room, cloakroom, spacious living room and conservatory on the ground floor whilst the first floor offers: three bedrooms (two with built in wardrobes) and family bathroom.

Another beautiful feature to this stunning home is the wrap around landscaped gardens as well off street parking for two cars and a garage. CALL TO BOOK YOUR VIEWING.

Front

Entrance Hallway

Kitchen/Breakfast Room



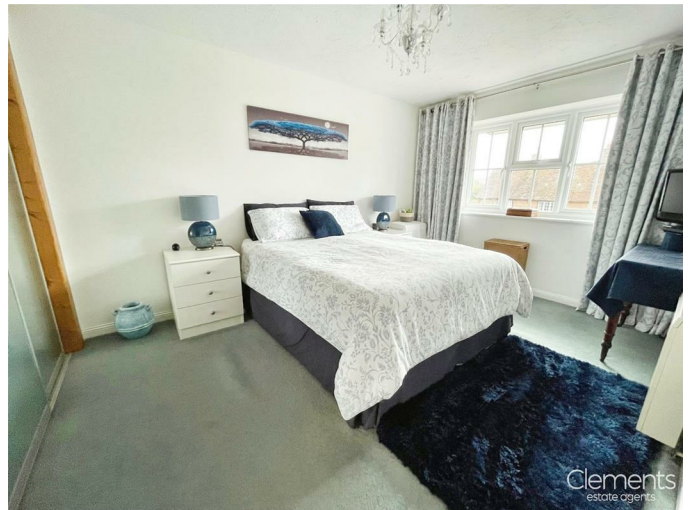
Landing



Living Room



Bedroom One



Conservatory



Bedroom Two



Cloakroom

Bedroom Three

Family Bathroom



Gardens



Parking

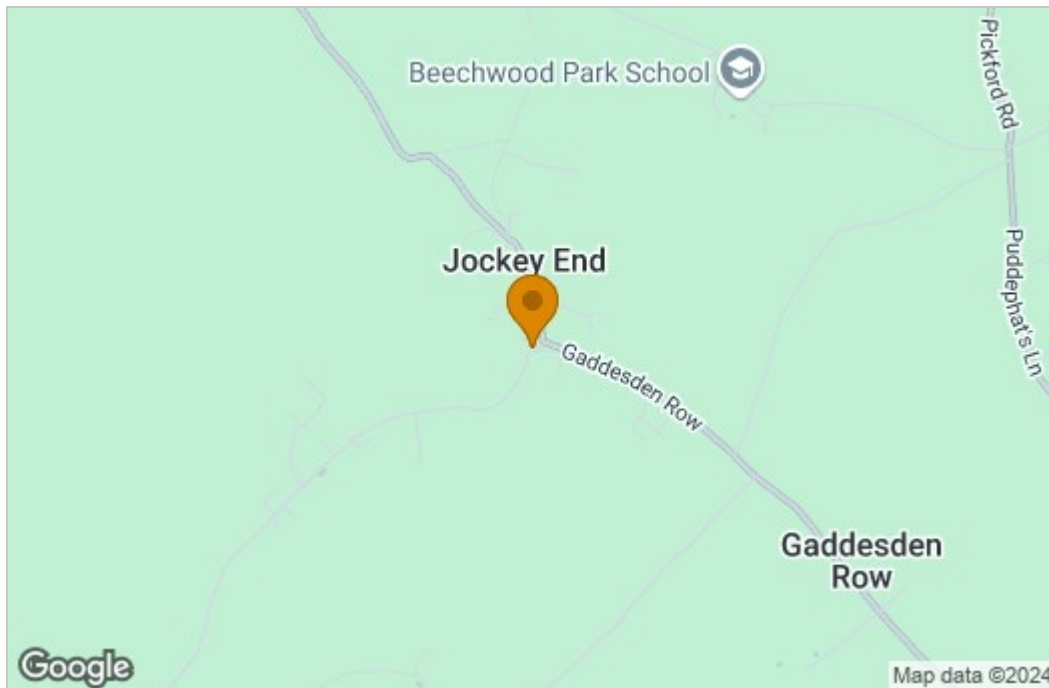
Floor Plan



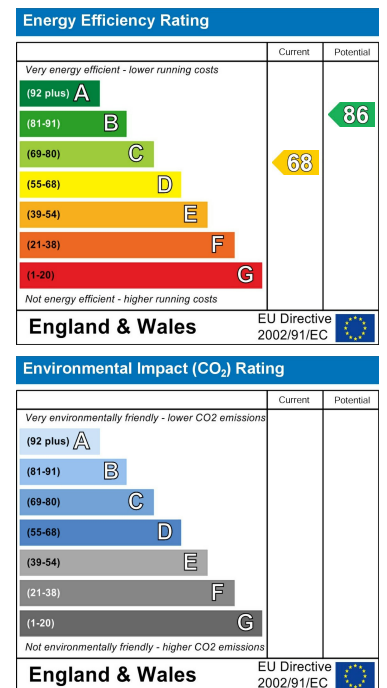
Total floor area 106.6 sq.m. (1,147 sq.ft.) approx

This plan is for illustration purposes only and may not be representative of the property. Plan not to scale. Powered by PropertyBox

Area Map



Energy Efficiency Graph



These particulars, whilst believed to be accurate are set out as a general outline only for guidance and do not constitute any part of an offer or contract. Intending purchasers should not rely on them as statements of representation of fact, but must satisfy themselves by inspection or otherwise as to their accuracy. No person in this firm's employment has the authority to make or give any representation or warranty in respect of the property.