



Clements estate agents



KD Tower, Hemel Hempstead, HP1 1AU Offers Invited £170,000

A superb one double bedroom luxury apartment situated in this iconic block close to the Town Centre. The property offers excellent decorative order with a modern fitted kitchen and bathroom, spacious room sizes, superb views and a convenient location close to shops and amenities.

A superb one double bedroom luxury apartment situated in this iconic block close to the Town Centre. The property offers excellent decorative order with a modern fitted kitchen and bathroom, spacious room sizes, superb views and a convenient location close to shops and amenities.

COMMUNAL ENTRANCE

A very well decorated communal entrance area with entry phone system, security door leading to lifts and stairs.

FRONT DOOR LEADING TO :

ENTRANCE HALLWAY

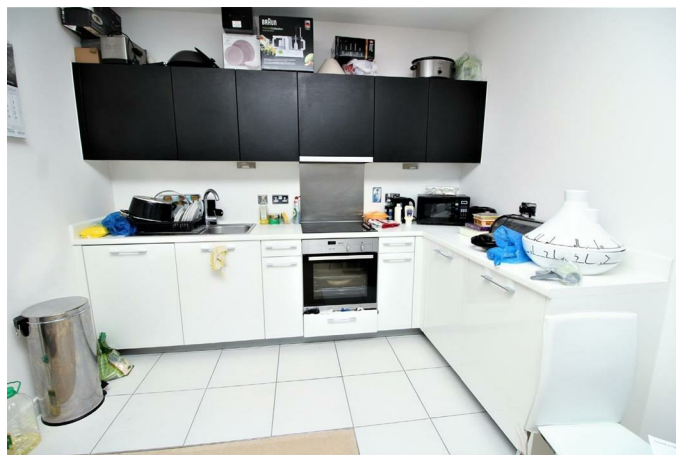
Very well decorated with doors to rooms and large built in cupboard housing plumbing and space for washing machine, wall mounted entry phone, fitted carpet, electric wall mounted heater, ceiling spot lights.

LOUNGE 18'0" x 11'7" (5.49 x 3.53)



Very well decorated with fitted carpet, a large double glazed full length window offering stunning views over the area, TV point, fitted carpet, leading to :

KITCHEN 10'2" x 6'2" (3.1 x 1.88)



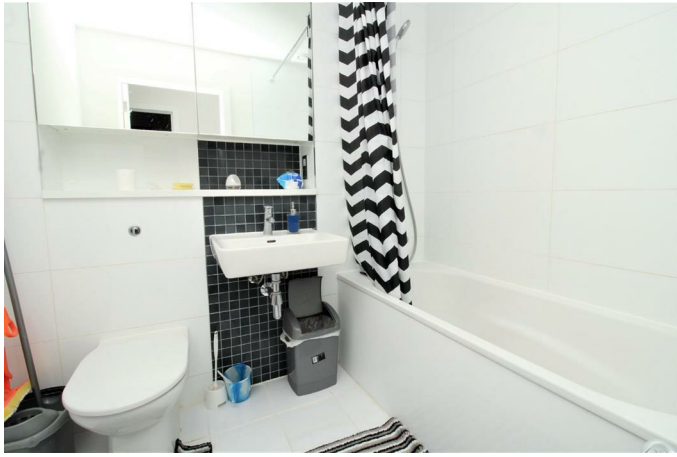
Comprising a range of modern wall and floor mounted units with roll top work surfaces, stainless steel sink with single drainer, integral stainless steel oven with electric hob and extractor hood over, integral dish washer and fridge freezer, part tiled walls, inset ceiling spot lights.

BEDROOM 13'8" x 10'3" (4.17 x 3.12)



Well decorated with a full length double glazed window to rear offering superb views, electric wall mounted heater, fitted wardrobes, fitted carpet.

BATHROOM



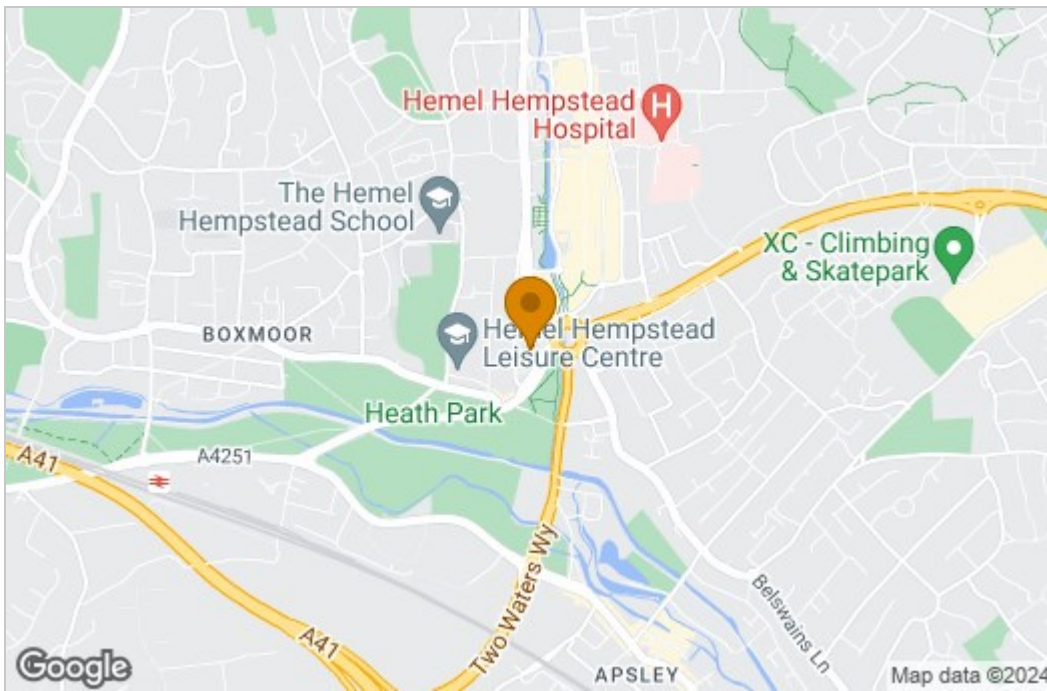
A modern luxury bathroom comprising a panel enclosed bath with mixer taps and shower attachment, low level WC, heated towel rail, part tiled walls, and tiled floor, ceiling spot lights, fitted cupboards.

Floor Plan

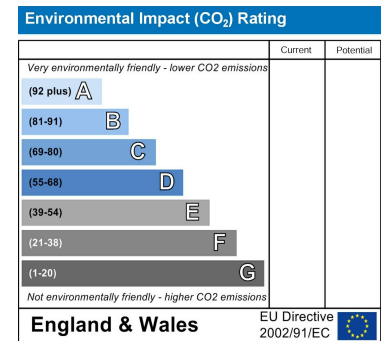
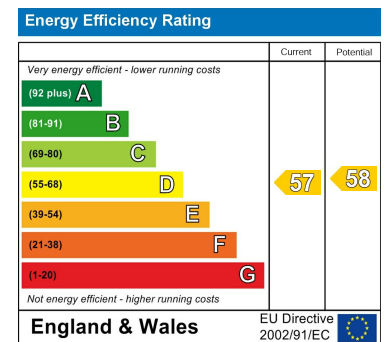
Ground Floor



Area Map



Energy Efficiency Graph



These particulars, whilst believed to be accurate are set out as a general outline only for guidance and do not constitute any part of an offer or contract. Intending purchasers should not rely on them as statements of representation of fact, but must satisfy themselves by inspection or otherwise as to their accuracy. No person in this firm's employment has the authority to make or give any representation or warranty in respect of the property.