



Croxley Road, Hemel Hempstead, HP3 9GY
Asking Price £310,000

SALE BY TENDER - Clements Estate Agents are pleased to offer this lovely two bedroom ground floor luxury apartment situated in this waterside development. The property offers excellent decorative order with a modern kitchen and bathroom, spacious room sizes, large terrace, allocated parking and a sought after Nash Mills Wharf location set close to the amenities.

A lovely two bedroom ground floor luxury apartment situated in this waterside development. The property offers excellent decorative order with a modern kitchen and bathroom, spacious room sizes, large terrace, allocated parking and a sought after Nash Mills Wharf location set close to the amenities. SALE BY TENDER.

COMMUNAL ENTRANCE

Entry phone system with security door. Communal hallway leading to own front door.

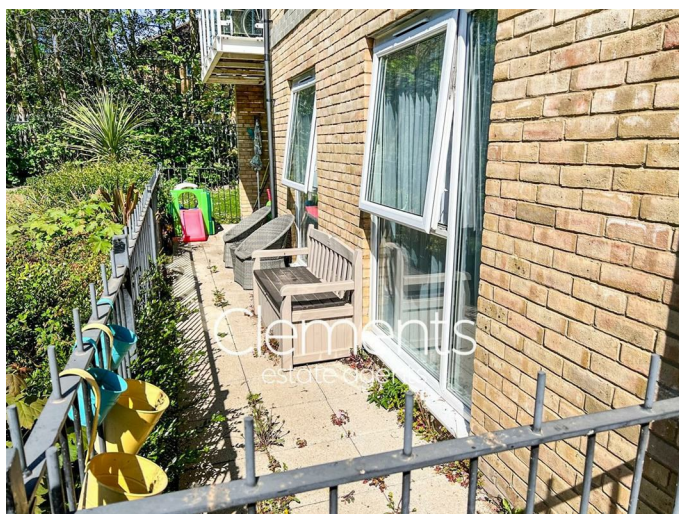
ENTRANCE HALLWAY

Well decorated with fitted carpet, two built in cupboards, wall mounted radiator, doors to :

LOUNGE AREA 16'2 x 15'8 (4.93m x 4.78m)

A large well decorated double aspect room with double glazed windows to side and rear with further double glazed French doors to the rear offering lovely waterside views leading on to the Terrace, TV point, wall mounted radiator, leading to :

TERRACE



Railing enclosed with views over the water to front.

KITCHEN AREA 15'8 x 6'7 (4.78m x 2.01m)



Comprising a range of wall and floor mounted units with roll top work surfaces and breakfast bar, inset stainless steel sink with drainer, built in oven with gas hob and extractor above, plumbing and space for a washing machine, space for fridge and freezer, wall mounted radiator.

MASTER BEDROOM 13'8 x 9'1 (4.17m x 2.77m)



Well decorated with a double glazed window to rear with excellent waterside views, wall mounted radiator, fitted wardrobes, fitted carpet.

BEDROOM TWO 13'4 x 9'3 (4.06m x 2.82m)



Well decorated with a double glazed window to rear with excellent waterside views, wall mounted radiator, fitted carpet.

BATHROOM



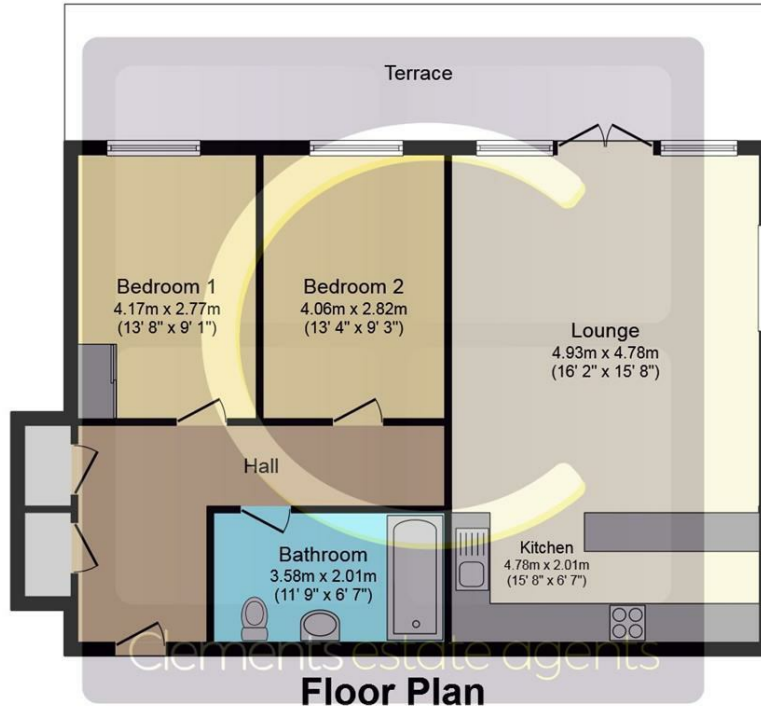
Comprising a panel enclosed bath with mixer taps and shower attachment, pedestal wash hand basin, low level WC, tiled splash backs, laminate wood flooring, heated towel rail.

OUTSIDE



Covered allocated parking and communal gardens to rear.

Floor Plan

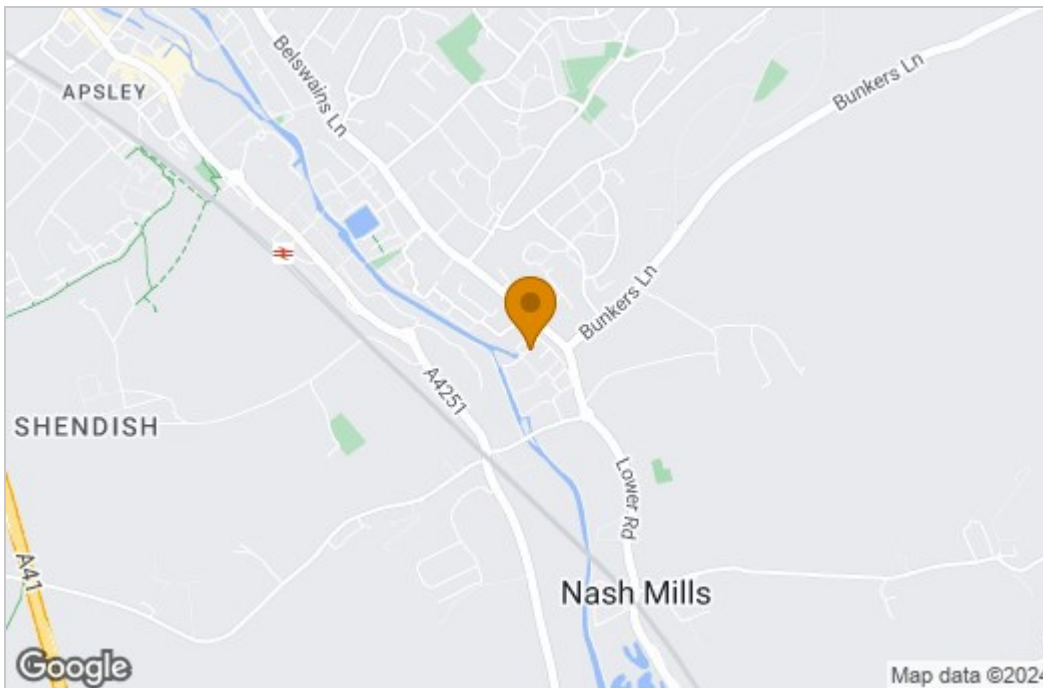


Floor area 81.9 sq.m. (882 sq.ft.) approx

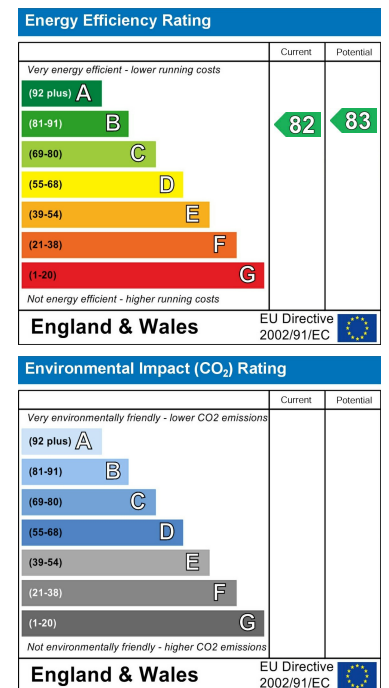
Total floor area 81.9 sq.m. (882 sq.ft.) approx

This Floor Plan is for illustration purposes only and may not be representative of the property. The position and size of doors, windows and other features are approximate. Unauthorized reproduction prohibited. © PropertyBOX

Area Map



Energy Efficiency Graph



These particulars, whilst believed to be accurate are set out as a general outline only for guidance and do not constitute any part of an offer or contract. Intending purchasers should not rely on them as statements of representation of fact, but must satisfy themselves by inspection or otherwise as to their accuracy. No person in this firm's employment has the authority to make or give any representation or warranty in respect of the property.

45 Marlowes, Hemel Hempstead, Hertfordshire, HP1 1LD

Tel: 01442 214151 Email: sales@clementsestateagents.co.uk <https://www.clementsestateagents.co.uk>