



Clements estate agents



Woodwhite Way , Hemel Hempstead, HP2 7BS

Clements are delighted to market this exceptional double fronted link detached family home. Offering spacious and versatile living accommodation to include: two separate reception rooms, kitchen, walk in pantry, WC, family bathroom, en-suite to master bedroom and two further bedrooms. The property has a garage and a sizeable garden offering someone a 'blank canvas' to landscape as they desire. VIEWING STRONGLY ADVISED.

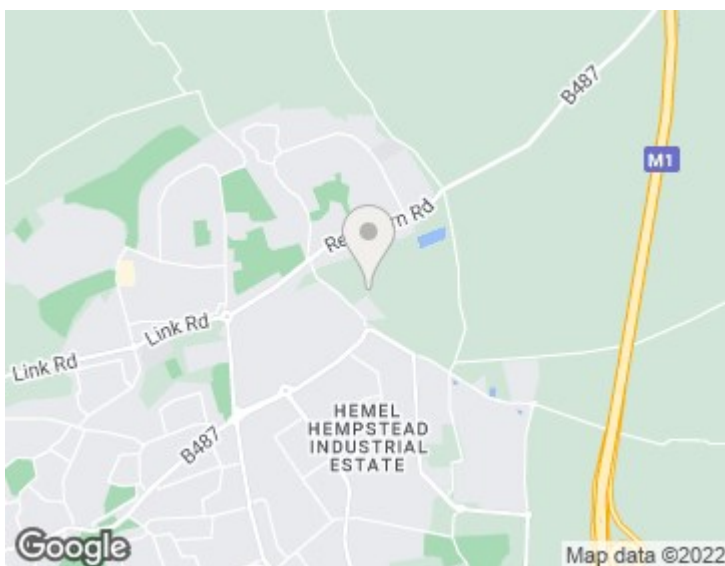
Asking Price £510,000

63 Woodwhite Way

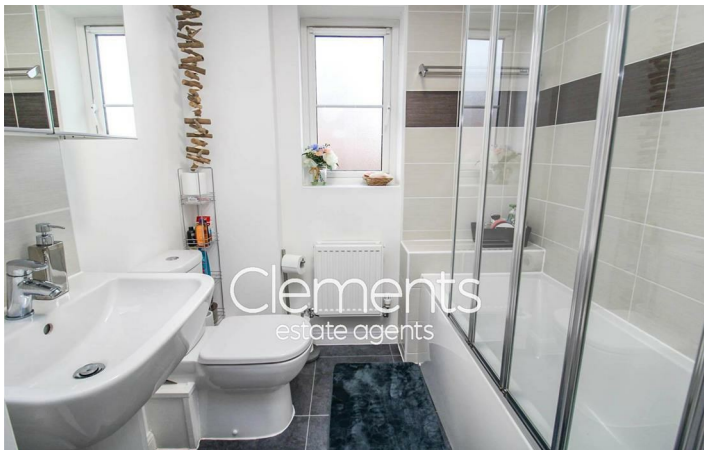
, Hemel Hempstead, HP2 7BS



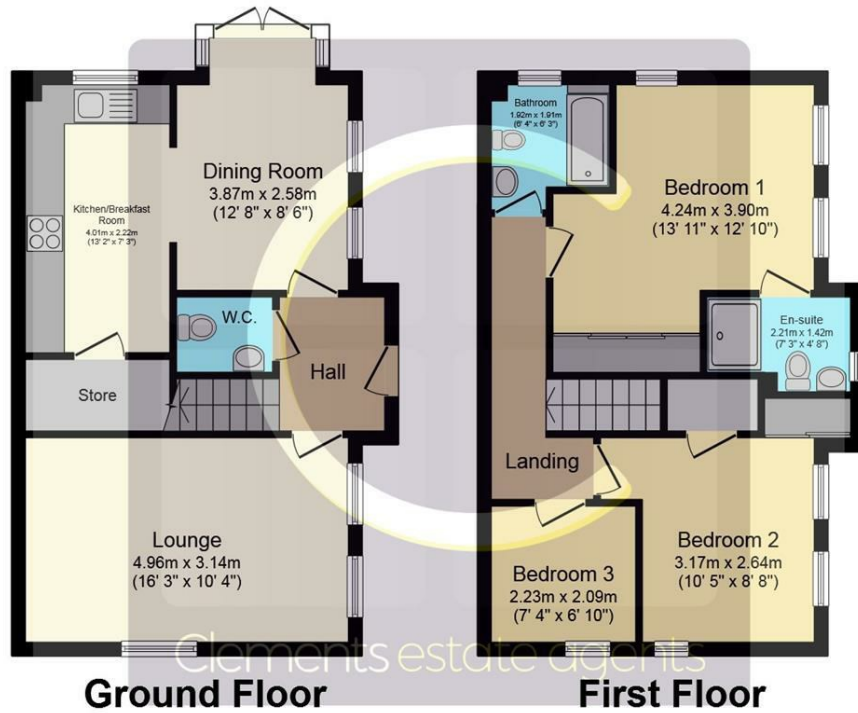
- LINK DETACHED FAMILY HOME
- THREE BEDROOMS
- TWO RECEPTION ROOMS
- THREE TOILETS
- TWO BATHROOMS
- GARAGE
- LARGE GARDEN
- IMMACULATELY PRESENTED
- CLOSE TO MAJOR ROAD LINKS



Energy Efficiency Rating		
	Current	Potential
Very energy efficient - lower running costs		
(92 plus) A		94
(81-91) B	83	
(69-80) C		
(55-68) D		
(39-54) E		
(21-38) F		
(1-20) G		
Not energy efficient - higher running costs		
England & Wales	EU Directive 2002/91/EC	



Floor Plan



Floor area 44.7 sq.m. (481 sq.ft.) approx

Floor area 43.6 sq.m. (470 sq.ft.) approx

Total floor area 88.3 sq.m. (951 sq.ft.) approx

This Floor Plan is for illustration purposes only and may not be representative of the property. The position and size of doors, windows and other features are approximate. Unauthorized reproduction prohibited. © PropertyBOX

These particulars, whilst believed to be accurate are set out as a general outline only for guidance and do not constitute any part of an offer or contract. Intending purchasers should not rely on them as statements of representation of fact, but must satisfy themselves by inspection or otherwise as to their accuracy. No person in this firm's employment has the authority to make or give any representation or warranty in respect of the property.

