

2 bedroom Flat - Conversion

**Grove Road, London, E17**

Offers in excess of £485,000    Leasehold - Share of Freehold



First floor, two-bedroom flat located on the borders of Walthamstow Village conservation area. A large two-bedroom property with double glazing, gas central heating and good size double bedrooms. This property would be an ideal fit for a first-time buyer who would like to be close to Walthamstow Central Station and the shopping centre.

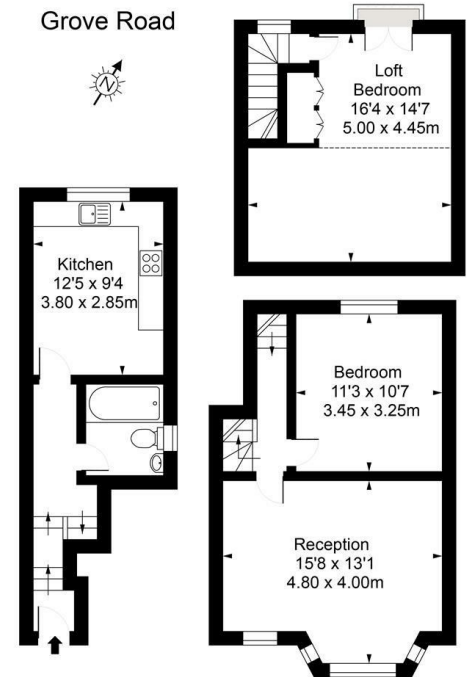
High ceilings and the share of freehold make this an ideal transaction light throughout throw away from Village Delis and Walthamstow Central.

To view this property  
[info@coppermills.co.uk](mailto:info@coppermills.co.uk)  
020 8509 9170

## Grove Road, London, E17



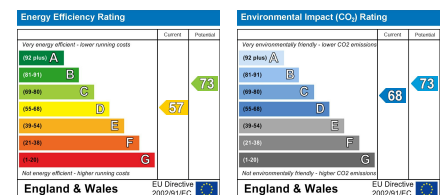
Grove Road



Approx Gross Internal Area 818 Sq Ft - 75.98 Sq M

FOR ILLUSTRATIVE PURPOSES ONLY. NOT TO SCALE.  
Whilst every attempt has been made to ensure the accuracy of the floorplan shown, all measurements, dimensions, fixtures, fittings and any other details shown are an approximate representation for illustrative purposes only and are not to scale. No responsibility is taken for any error, omission, misstatement or use of data shown. Floor plan by www.bestangle.co.uk

### EPC details



info@coppermills.co.uk  
T: 020 8150 1177  
M: 077 8217 0925  
www.coppermills.co.uk  
63 St James Street  
London E17 7PJ

You may download, store and use the material for your own personal use and research. You may not republish, retransmit, redistribute or otherwise make the material available to any party or make the same available on any website, online service or bulletin board of your own or of any other party or make the same available in hard copy or in any other media without the owner's express prior written consent. The owner's copyright must remain on all reproductions of material taken.