

Coppermills

5 bedroom House - Terraced

Lyndhurst Drive, London, E10

Offers in excess of £900,000 Freehold

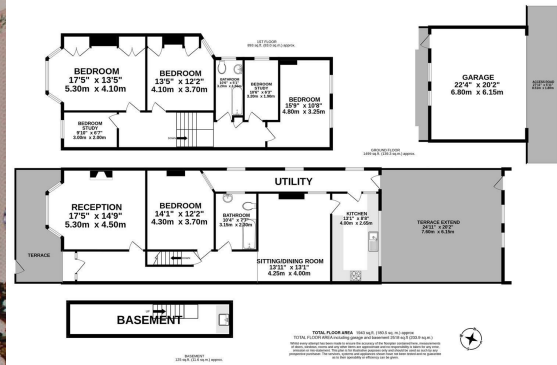


Lyndhurst Drive is located just off Abbots Park and is set on a tree-lined road. We are delighted to offer this five-bedroom, three-living room, two-bathroom terraced house for sale. This property enjoys high ceilings, a stunning Victorian tiled floor, coving, ceiling roses and other period features. This home you can put your own stamp on it.

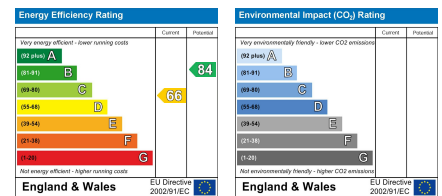
One of the standout features of this home is the double garage, perfect for parking or additional storage. The basement adds even more storage space, ensuring you'll never run out of room for your belongings. Step outside to the delightful patio garden, a tranquil oasis where you can relax and unwind after a long day.

To view this property
info@coppermills.co.uk
020 8509 9170

Lyndhurst Drive, London, E10



EPC details



info@coppermills.co.uk
 T: 020 8150 1177
 M: 077 8217 0925
 www.coppermills.co.uk
 63 St James Street
 London E17 7PJ

You may download, store and use the material for your own personal use and research. You may not republish, retransmit, redistribute or otherwise make the material available to any party or make the same available on any website, online service or bulletin board of your own or of any other party or make the same available in hard copy or in any other media without the owner's express prior written consent. The owner's copyright must remain on all reproductions of material taken.