



20 Violette Szabo House, Hamilton Road

London, SE27 9RU

£1,600 Per Month

A beautifully presented two double bedroom split level apartment. The property benefits from having a modern fitted kitchen and bathroom suite, reception room with Juliette balcony, and well-maintained communal grounds. Situated only a 13-minute walk from West Norwood train station and bus garage (Walking times estimated by Google maps).

Council Tax Band B £1370

Lambeth Council.

Total Deposit £1846.15 9 (5 Week Rent)

Viewing

Please contact our Galloways West Norwood Office on 020 8766 6111

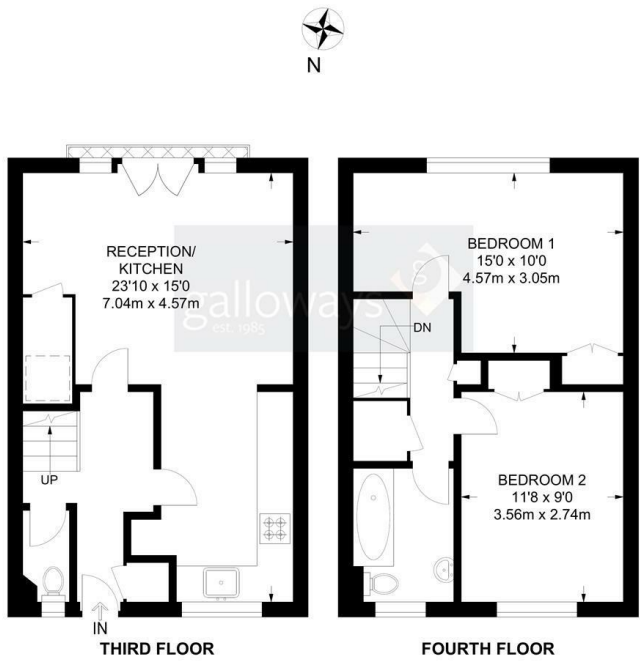
if you wish to arrange a viewing appointment for this property or require further information

- TWO DOUBLE BEDROOMS
- SPLIT LEVEL
- WELL PRESNETED THROUGHOUT
- PART FURNISHED
- LOTS OF NATURAL LIGHT
- JUILETTE BALCONY
- COMMUNAL GARDENS
- GREAT LOCATION
- GAS CENTRAL HEATING
- AVAILABLE TO LET



Floor Plan

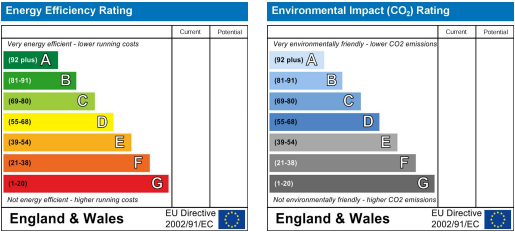
Violette Szabo House, SE27
2 Bedroom Flat
APPROXIMATE GROSS INTERNAL AREA: 716 SQ FT / 66.5 SQ M



Area Map



Energy Efficiency Graph



These particulars, whilst believed to be accurate are set out as a general outline only for guidance and do not constitute any part of an offer or contract. Intending purchasers should not rely on them as statements of representation of fact, but must satisfy themselves by inspection or otherwise as to their accuracy. No person in this firm's employment has the authority to make or give any representation or warranty in respect of the property.