



118 Palace Road

London, SW2 3JZ

£1,200 Per Month

A brilliant-sized studio apartment situated on Palace Road, within walking distance of Tulse Hill train station, Brockwell Park, and a fantastic array of local amenities. The flat is well presented throughout, boasts bundles of natural light, and provides direct access to a garden.

Lambeth Council
Council Tax Band B £1,519.74pa
Total Deposit £1384.61 (5 weeks rent)

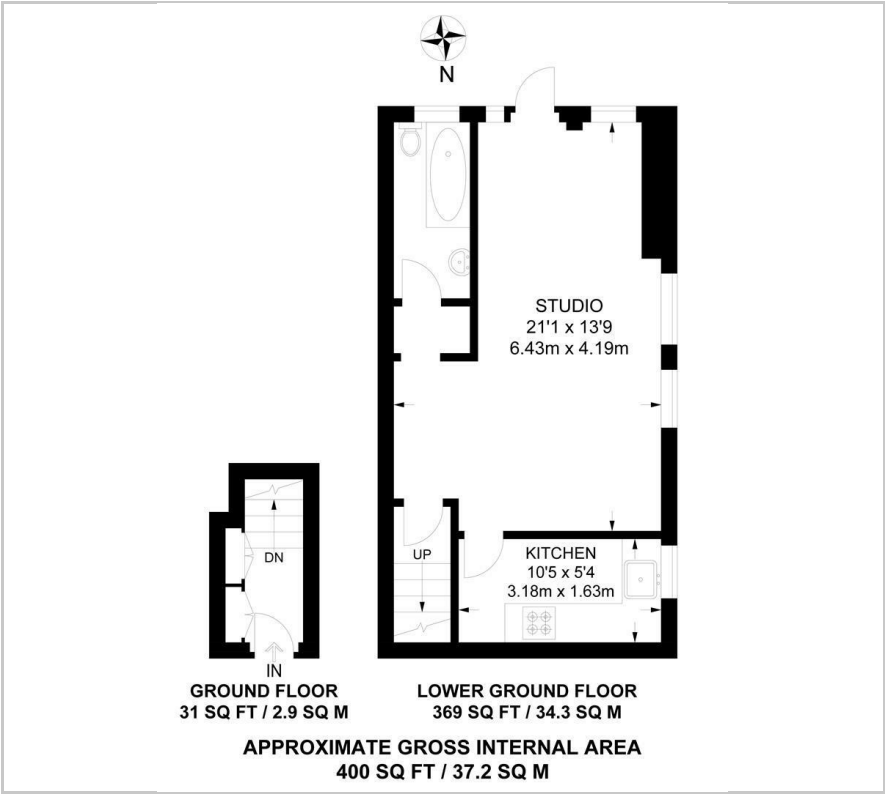
Viewing

Please contact our Galloways West Norwood Office on 020 8766 6111

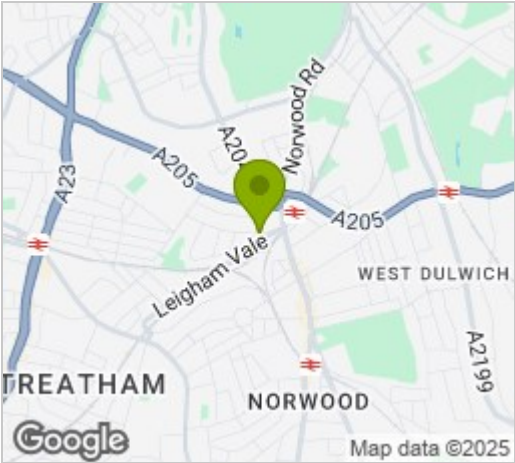
if you wish to arrange a viewing appointment for this property or require further information

- STUDIO APARTMENT
- WELL PRESENTED THROUGHOUT
- PART FURNISHED
- MODERN FITTED KITCHEN
- DIRECT ACCESS TO REAR GARDEN
- LOTS OF NATURAL LIGHT
- GAS CENTRAL HEATING
- 0.2 MILES TO TULSE HILL STATION
- 0.7 MILES TO BROCKWELL PARK
- (DISTANCES ESTIMATED VIA GOOGLE MAPS)

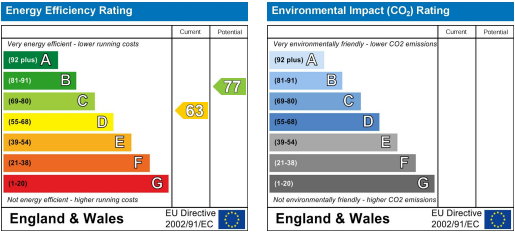
Floor Plan



Area Map



Energy Efficiency Graph



These particulars, whilst believed to be accurate are set out as a general outline only for guidance and do not constitute any part of an offer or contract. Intending purchasers should not rely on them as statements of representation of fact, but must satisfy themselves by inspection or otherwise as to their accuracy. No person in this firm's employment has the authority to make or give any representation or warranty in respect of the property.