



13E Avenue Park Road

West Norwood, SE27 9BT

£1,500 Per Month

This delightful top floor flat on Avenue Park Road offers a perfect blend of comfort and convenience. With one spacious bedroom, this property is ideal for individuals or couples seeking a retreat in a vibrant community.

The flat features a well-appointed reception room, providing a welcoming space for relaxation and entertaining. The layout is thoughtfully designed to maximise natural light, creating a warm and inviting atmosphere throughout. The bathroom is modern and functional, catering to all your daily needs.

One of the standout features of this property is its prime location. Situated within walking distance of Tulse Hill train station, commuting to central London and beyond is both easy and efficient. Additionally, the flat is conveniently close to a variety of local amenities, including shops, cafes, and parks, ensuring that everything you need is just a short stroll away.

This flat presents an excellent opportunity for those looking to enjoy the benefits of urban living while being surrounded by the tranquillity of a residential neighbourhood. Embrace the lifestyle this flat has to offer, where comfort meets convenience.

Lambeth Council
Council Tax Band B £1,519.74pa
Total Deposit £1730.77 (5 weeks rent)

Viewing

Please contact our Galloways West Norwood Office on 020 8766 6111

if you wish to arrange a viewing appointment for this property or require further information

- TOP FLOOR FLAT
- ONE BEDROOM
- GREAT LOCATION
- WALKING DISTANCE TO LOCAL AMENITIES
- SEPERATE KITCHEN
- CHARACTER PROPERTY
- VICTORIAN CONVERSION
- 0.6 MILES FROM BROCKWELL PARK
- LESS THAN 0.1 MILES FROM TULSE HILL TRAIN STATION
- (TIME ESTIMATED VIA GOOGLE MAPS)



1



1



1

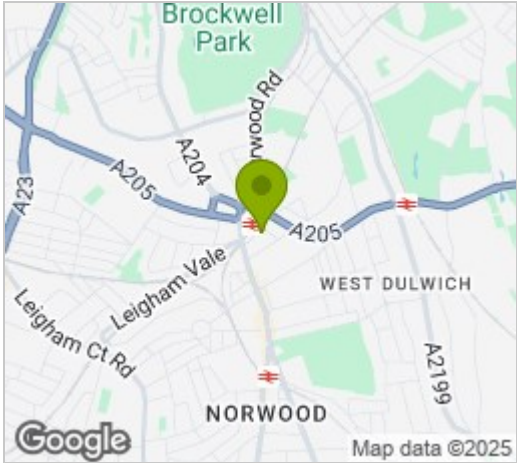


C

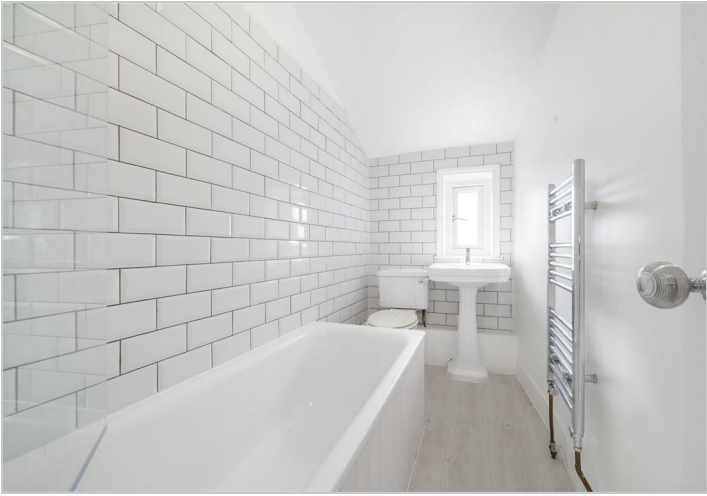
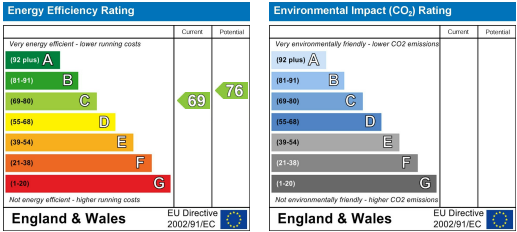
Floor Plan



Area Map



Energy Efficiency Graph



These particulars, whilst believed to be accurate are set out as a general outline only for guidance and do not constitute any part of an offer or contract. Intending purchasers should not rely on them as statements of representation of fact, but must satisfy themselves by inspection or otherwise as to their accuracy. No person in this firm's employment has the authority to make or give any representation or warranty in respect of the property.