



17 Heron Court Elmworth Grove

London, SE21 8RQ

Guide Price £425,000

Galloways are delighted to present to the market this well-presented three-bedroom flat set within Heron Court, on Elmworth Grove, in SE21. This charming property offers a spacious and bright living environment, perfect for families or professionals seeking a comfortable and convenient home.

The flat features a generously sized reception room, ideal for entertaining or relaxing, and a separate kitchen equipped with modern appliances and ample storage. The three bedrooms are well-proportioned, providing plenty of space for furnishings and personal touches.

One of the standout features of this property is the access to large communal gardens, offering a peaceful retreat for residents to enjoy outdoor activities or unwind. The estate also includes an allotment, perfect for those with a green thumb who want to grow their own plants and vegetables.

Located in the heart of West Dulwich, the property is within easy reach of a wide array of local amenities, including shops, cafes, and restaurants. The vibrant community ensures that everything you need is close at hand. Furthermore, the flat is within walking distance of West Dulwich train station, providing excellent transport links for commuters and easy access to central London and surrounding areas.

Overall, this spacious three-bedroom flat is an ideal home for those looking for a well-maintained property in a prime location with great communal facilities. Don't miss the opportunity to make this wonderful flat your new home.

- £425,000 - £450,000 GUIDE PRICE
- THREE SPACIOUS BEDROOMS
- SEPARATE MODERN FITTED KITCHEN
- BRIGHT AND AIRY THROUGHOUT
- ACCESS TO LARGE COMMUNAL GARDENS
- WELL-PRESENTED AND MAINTAINED PROPERTY
- GAS CENTRAL HEATING
- LARGE RECEPTION ROOM PERFECT FOR ENTERTAINING
- 8 MINUTE WALK FROM WEST DULWICH STATION
- (TIMES ESTIMATED VIA GOOGLE MAPS)

Viewing

Please contact our Galloways West Norwood Office on 020 8766 6111

if you wish to arrange a viewing appointment for this property or
[receive further information](#)



3



1

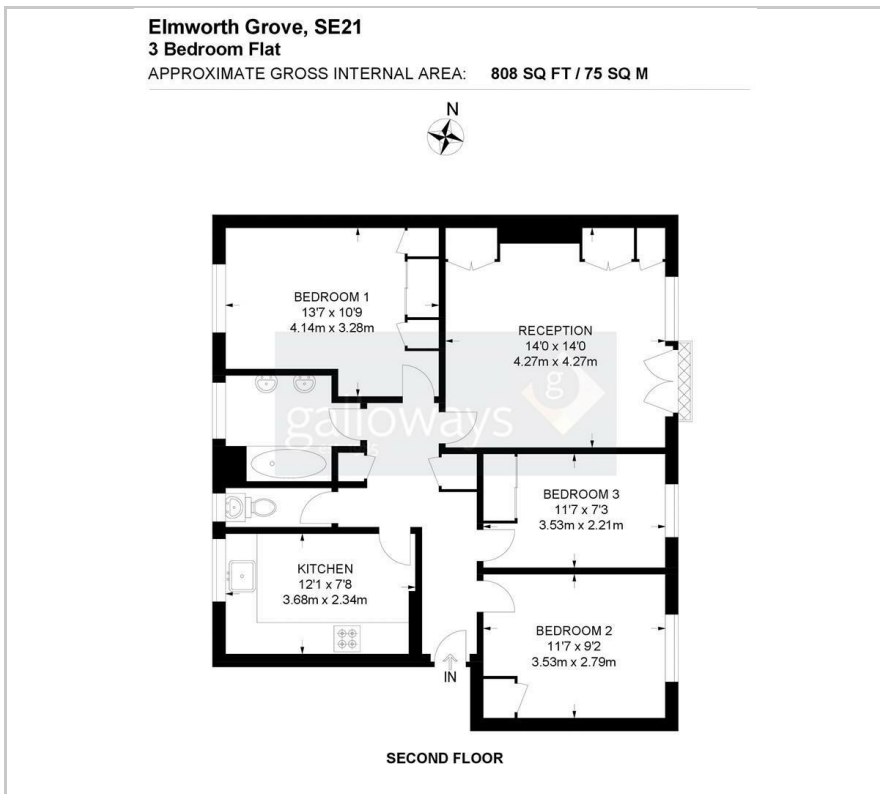


1



D

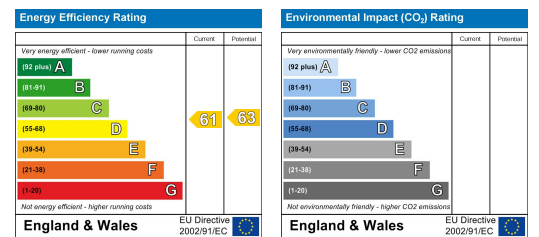
Floor Plan



Area Map



Energy Efficiency Graph



These particulars, whilst believed to be accurate are set out as a general outline only for guidance and do not constitute any part of an offer or contract. Intending purchasers should not rely on them as statements of representation of fact, but must satisfy themselves by inspection or otherwise as to their accuracy. No person in this firm's employment has the authority to make or give any representation or warranty in respect of the property.