



**Brackendale Close, Surrey, TW20 0UL**

**£2,800 pcm Guide Price**

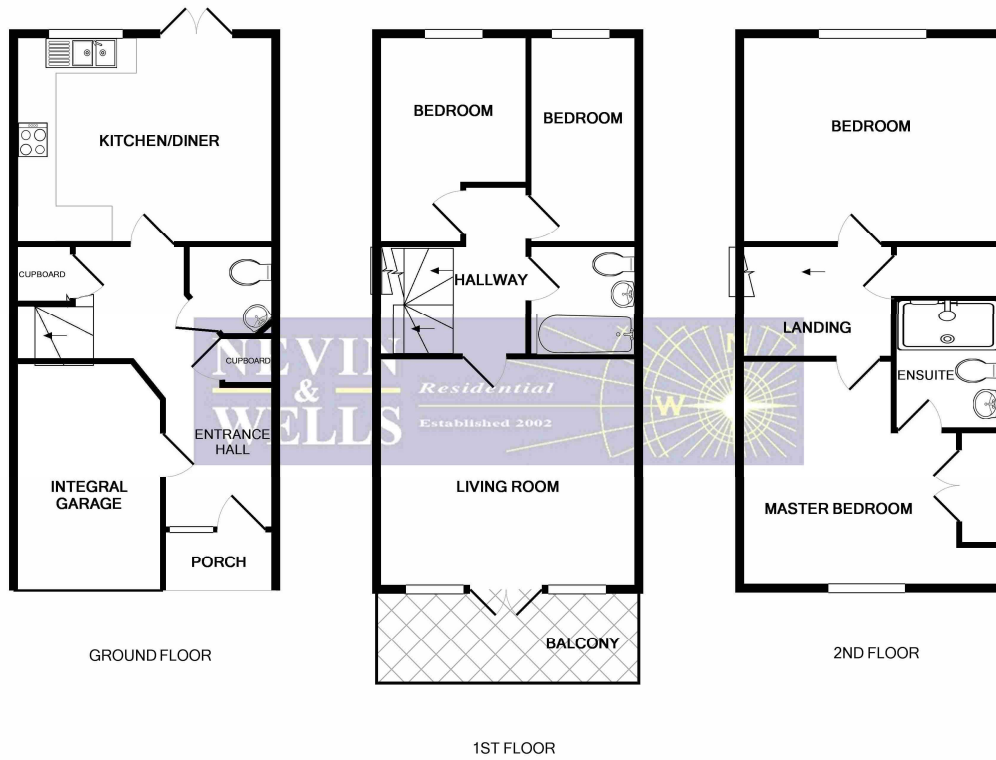


An excellent opportunity to let this beautifully presented modern four bedroom townhouse, situated within an executive cul-de-sac location. Accommodation comprises large entrance hallway, downstairs W.C, fully fitted kitchen, first floor lounge with balcony, family bathroom and en-suite facilities. Further benefits include integral garage, own driveway and private south facing garden. Windsor Great Park and Virginia Water Lake are within short walking distance.

**AVAILABLE 26<sup>TH</sup> MAY 2024 - FURNISHED**

# Brackendale Close, Englefield Close, Surrey, TW20 0UL

## FLOOR PLAN



Whilst every attempt has been made to ensure the accuracy of the floor plan contained here, measurements of doors, windows, rooms and any other items are approximate and no responsibility is taken for any error, omission, or mis-statement. This plan is for illustrative purposes only and should be used as such by any prospective purchaser. The services, systems and appliances shown have not been tested and no guarantee as to their operability or efficiency can be given.  
Made with Metropix ©2018

All measurements are approximate. Nevin and Wells Residential have not tested any systems or appliances.

## EPC

