



St Johns Court, Egham, Surrey, TW20 9QA

£1,000 pcm Furnished

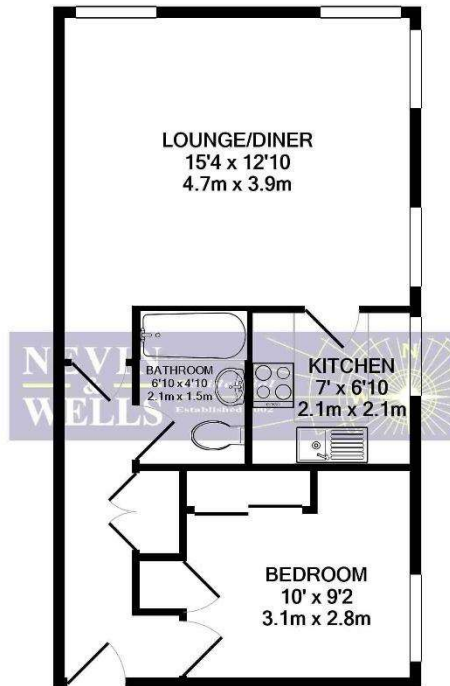


A spacious, modern, one bedroom first floor apartment located in the centre of Egham, within a few minutes' walk from the mainline station and new Egham Gateway West retail development. The property comprises double bedroom, shower room, spacious lounge/diner with separate fitted kitchen.

AVAILABLE JANUARY 2023

St Johns Court, Egham, Surrey, TW20 9QA

FLOORPLAN



TOTAL APPROX. FLOOR AREA 446 SQ.FT. (41.4 SQ.M.)

Whilst every attempt has been made to ensure the accuracy of the floor plan contained here, measurements of doors, windows, rooms and any other items are approximate and no responsibility is taken for any error, omission, or mis-statement. This plan is for illustrative purposes only and should be used as such by any prospective purchaser. The services, systems and appliances shown have not been tested and no guarantee as to their operability or efficiency can be given
Made with Metropix ©2021

EPC

19 St. Johns Court Church Road EGHAM TW20 9QA		Energy rating C
Valid until 31 October 2022	Certificate number 9002-2839-7093-9502-4645	

Property type	Mid-floor flat
Total floor area	43 square metres

Score	Energy rating	Current	Potential
92+	A		
81-91	B		
69-80	C	77 c	80 c
55-68	D		
39-54	E		
21-38	F		
1-20	G		

The graph shows this property's current and potential energy efficiency.

Properties are given a rating from A (most efficient) to G (least efficient).

Properties are also given a score. The higher the number the lower your fuel bills are likely to be.

All measurements are approximate. Nevin & Wells Residential have not tested any systems or appliances.