



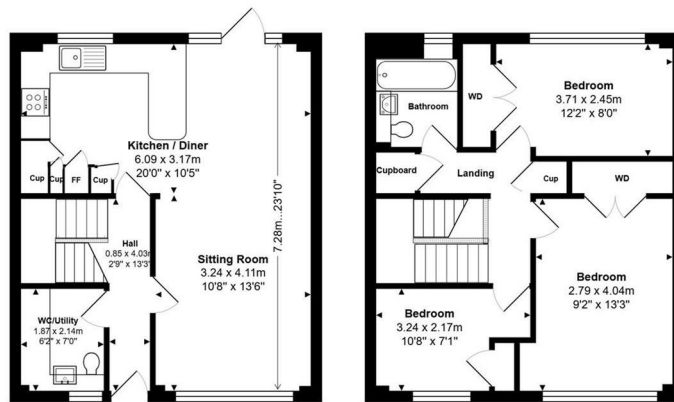
TO LET



389 Selborne Avenue, Aldershot, GU11 3RH

£1,650 Per Calendar Month

- Available Beginning Of December
- Spacious Living Room
- Utility Room
- On Road Parking
- Council Tax Band C
- 3 bedrooms
- Modern Kitchen
- Downstairs W/C
- Five Weeks' Deposit £1903.84
- EPC Rating C (77)



Total Area: 89.7 m<sup>2</sup> ... 965 ft<sup>2</sup>  
 All measurements are approximate and for display purposes only

## THE PROPERTY

Set just down the road from Tice's Meadows Nature Reserve this beautiful 3 bedroom house is available at the beginning of December. Inside it boasts a modern open plan living/diner/kitchen layout, a great sized garden and a utility room with a downstairs w/c. Upstairs you have 3 spacious bedrooms all with wardrobe/storage space and a family bathroom.

Embrace the outdoors with local sports and leisure facilities such as Aldershot Lido, the Cricket Club, and Rushmoor Gymnastics Academy, all set within peaceful natural surroundings. With a supermarket only 1.8 miles away and convenient public transport close by, everything you need is within easy reach.

## SITUATION

## Directions