



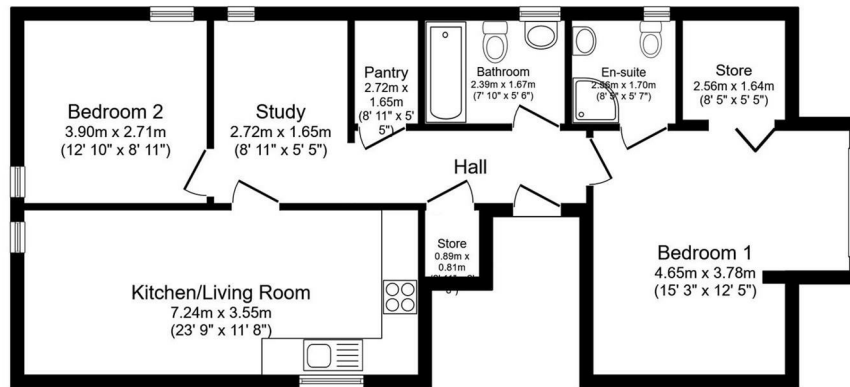
TO LET



Flat 4, 10 Queens Road, Farnborough, Hampshire, GU14 6DN

£1,650 PCM

- Superb Apartment
- Top floor Penthouse
- Fully furnished
- Northcamp Village
- Council Tax Band B
- Modern Throughout
- Available Now
- Parking
- 5 Week Deposit £1903.84
- EPC Energy Rating Band (B) 84



Floor Plan

This floor plan is for illustrative purposes only. It is not drawn to scale. Any measurements, floor areas (including any total floor area), openings and orientations are approximate. No details are guaranteed, they cannot be relied upon for any purpose and do not form any part of any agreement. No liability is taken for any error, omission or misstatement. A party must rely upon its own inspection(s). Powered by www.propertybox.io

THE PROPERTY

Step into luxury living with this beautifully presented, fully furnished penthouse apartment, ideally located in the heart of North Camp Village. Boasting two generously sized double bedrooms, the master complete with a private en-suite, this stylish home offers comfort, space, and modern convenience. Ample storage throughout and an allocated parking space add to the practicality, making this a truly exceptional rental opportunity. ***DRAUGHT FLOORPLAN***

This high end apartment is ideally situated in the popular village of North Camp and just a short distance to three railway stations – North Camp Station (0.9 miles), Ash Vale Station (1.5 miles) and Farnborough Main Station (1.6 miles). It is also within walking distance to the local village shops and has easy access to the A331 and M3.

Available mid August.

SITUATION

Directions