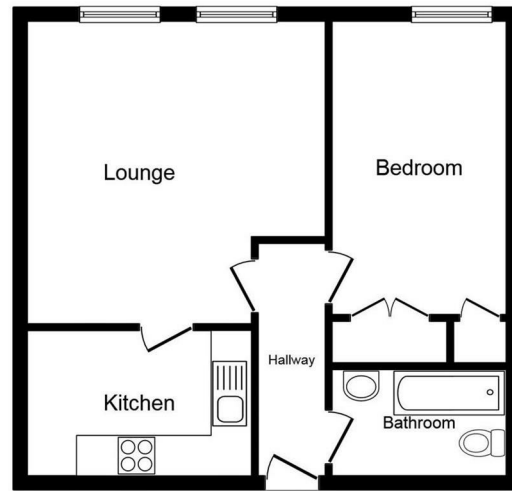




4 Copthall House Victoria Road, Aldershot, Hampshire, GU11 1SH
£950 PCM

- Close to station
- Parking included
- Town Centre
- Appliances included
- Council Tax Band B
- 1st floor
- One double bedroom
- Available Now
- Five Week Deposit £1096.15
- EPC Energy Rating Band (C) 66



Floor Plan

This plan is for illustration purposes only and may not be representative of the property. Plan not to scale.

THE PROPERTY

A South facing first floor apartment within walking distance of the station and town is now available. This property comes with allocated parking, an impressive 16ft lounge, fitted kitchen, bathroom with shower over bath.

Offering great commuter links including easy access to the M3 and A3, combined with the train station which serves London Waterloo in under an hour; Aldershot is in a great location. The town centre is well located and offers a rich history that can be noted around the areas as well as a choice of leisure facilities including a lido and sports centre, along with two theatres, a cinema and a choice of high street shops, restaurants and parks.

SITUATION

Directions