



**fosters**  
sales & lettings



**TO LET**



Flat 7, Copthall House 77-79 Victoria Road, Aldershot, GU11 1SH  
£950 PCM

- 16ft Lounge
- Available early September
- Close to Train Station
- Long term
- Council tax band B
- Kitchen with appliances
- Parking for one car
- Town Centre
- 5 Week Deposit £1096.15
- EPC energy rating band ( )

## THE PROPERTY

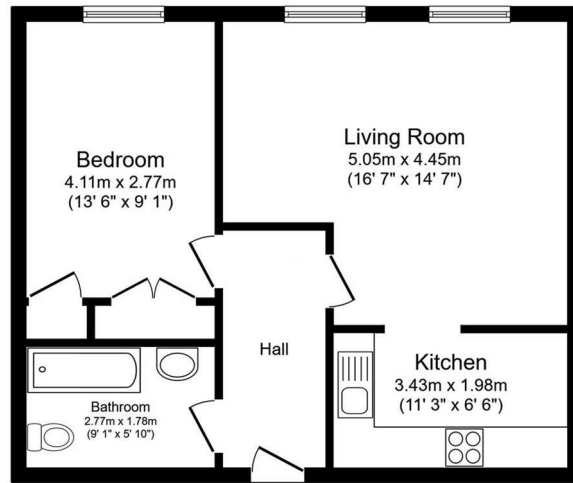
An immaculately presented apartment situated in the heart of the town, and in easy walking distance of the station and local shops. It offers a large double bedroom with fitted wardrobes, an impressive 16ft lounge/dining room, bathroom and kitchen with appliances. This is a must see flat!

With allocated parking to the rear for one car, the property is available early September.

### About Aldershot

Offering great commuter links including easy access to the M3 and A3, combined with the train station which serves London Waterloo in under an hour; Aldershot is in a great location. The town centre is well located and offers a rich history that can be noted around the areas as well as a choice of leisure facilities including a lido and sports centre, along with two theatres, a cinema and a choice of high street shops, restaurants and parks.

## SITUATION



Floor Plan

This floor plan is for illustrative purposes only. It is not drawn to scale. Any measurements, floor areas (including any total floor area), openings and orientations are approximate. No details are guaranteed, they cannot be relied upon for any purpose and do not form any part of any agreement. No liability is taken for any error, omission or misstatement. A party must rely upon its own inspection(s). Powered by [www.Propertybox.io](http://www.Propertybox.io)

## Directions