



7 Avon Close, Farnborough, Hampshire, GU14 9LN

Available now *Unfurnished* This superb three bedroom detached home is now on the market for rent. Finished to a very high/luxurious standard, this property has just been refurbished and redecorated throughout, offering a brand new kitchen with integrated appliances and three brand new bathrooms. Furthermore, it benefits from gas central heating and double glazing throughout.

In the generous sized open plan kitchen/dining room, you will find a dishwasher, washing machine/dryer and fridge/freezer. And this overlooks onto the stunning enclosed rear garden with patio area, perfect for entertaining guests/family.

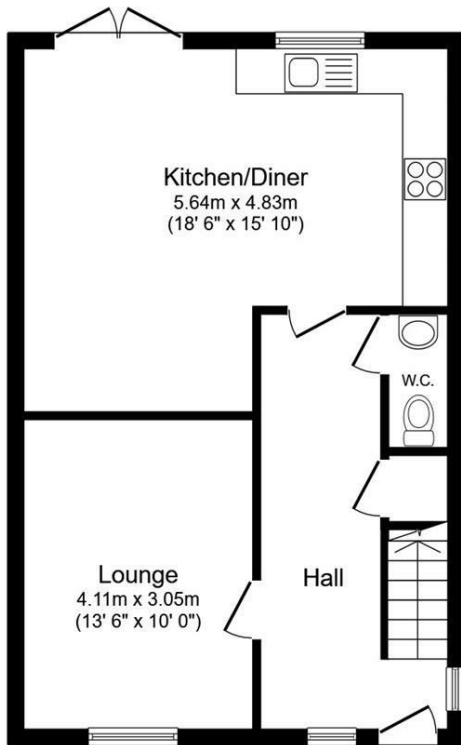
To the first floor, you will find all three bedrooms, the family bathroom and en-suite to the master.

You will find off road parking to the front of the property.

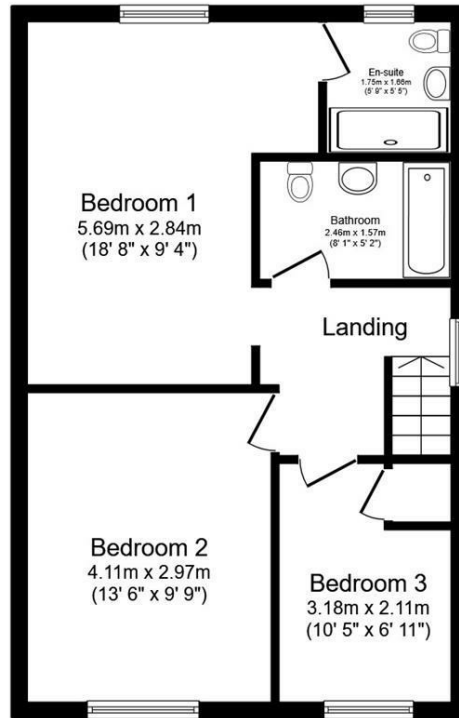
Enquire now for further details!

£2,200 PCM

- *Redecorated and Refurbished throughout*
- *Brand New Kitchen*
- *Brand New Bathrooms: Including a Family Bathroom, Ensuite and WC*
- *Dishwasher, Washer/Dryer and Fridge/Freezer Included!*
- *Large Master Bedroom, Large Double and a Single*
- *Generous Sized, Enclosed Rear Garden*
- *Parking for Two Cars*
- Five Weeks' Deposit £2538.46
- Council Tax Band D
- EPC Energy Rating Band (D) 56



Ground Floor



First Floor

This floor plan is for illustrative purposes only. It is not drawn to scale. Any measurements, floor areas (including any total floor area), openings and orientations are approximate. No details are guaranteed, they cannot be relied upon for any purpose and do not form any part of any agreement. No liability is taken for any error, omission or misstatement. A party must rely upon its own inspection(s). Powered by www.Propertybox.io

Energy Efficiency Rating		Current	Potential
Very energy efficient - lower running costs			
(92 plus) A			
(81-91) B			84
(69-80) C			
(55-68) D		56	
(39-54) E			
(21-38) F			
(1-20) G			
Not energy efficient - higher running costs			
England & Wales	EU Directive 2002/91/EC		