

# 26 HODE GARTH

THAME, OXFORDSHIRE. OX9 3GF



HAMNETT  
HAYWARD

# 26 HODE GARTH

THAME, OXFORDSHIRE. OX9 3GF

**A substantial four bedroom detached family home set within a generous walled garden offering contemporary and stylish open plan living space.**

Constructed from attractive red brick elevations reminiscent of a double fronted period house, this fabulous family home is a unique style forming part of this select development by Bellway Homes in 2018. Ideally positioned on the periphery of the development, this fine home overlooks the beautiful Thame Park estate with woodland views and further views over The Chilterns beyond. Furthermore, the property spills out to lovely adjoining walks bordering Thame Park, whilst linking to a network of further footpaths including the popular Phoenix trail connecting you directly to the picturesque town centre. For the commuter, Haddenham & Thame parkway is within a short drive, offering a comprehensive service into London Marylebone (under 40 minutes)

Offering bright and airy reception rooms ground floor living has been designed around a wonderful open plan kitchen/family/dining room which flows into a further reception room, both with large glazed doors opening onto the garden. The kitchen has been fitted with a contemporary range of wall and floor units with worktops, a comprehensive range of AEG integrated appliances include a refrigerator/freezer, dishwasher, eye level electric oven and gas hob. The remaining receptions include a bright and airy 16' double aspect sitting room and a useful study/TV room.

Bedroom accommodation is set out around a large central landing area and benefits from two generous bedroom suites. Of particular note is the master bedroom, extending to 15' and flooded with natural light whilst enjoying a stunning outlook over countryside. A further guest suite has an en-suite shower room and two further double bedrooms are served by a family bathroom.

Outside, 26 Hode Garth is approached by a driveway providing ample off street parking 5-6 vehicles which in-turn provides access to a substantial 20' x 20' detached garage. The remainder of the front has soft landscaping and further views. To the rear is a generous walled garden laid predominantly to lawn with two paved terrace area's for entertaining and outside dining.

In our opinion this imposing detached home offers a wonderful opportunity within a family friendly development, offering a stunning rural outlook whilst ideally positioned for footpaths to local schools and a short drive to the M40 and Haddenham & Thame parkway.

“AN EXCEPTIONAL FOUR BEDROOM DETACHED FAMILY HOME, IDEALLY POSITIONED OFFERING STUNNING VIEWS OVER THE ADJOINING THAME PARK ESTATE AND VIEWS OF THE BEAUTIFUL CHILTERN HILLS”



## AT A GLANCE

- Outstanding four bedroom detached family home enjoying views of adjoining countryside
- Substantial open plan kitchen/dining/family room extending to 22' in length
- Master bedroom and guest bedroom suites, with further family bathroom
- Picturesque market town with excellent connections to London Marylebone (under 40 minutes)
- Lovely setting with immediate access to a network of walks, linking to The Phoenix Trail and town



## SUMMARY

- Reception hall
- Cloakroom
- Sitting Room with wood burning stove
- Family room
- Substantial 22' open plan kitchen/dining room
- Utility room
- Study
- Generous landing
- Master bedroom with en-suite shower room
- Guest bedroom with en-suite shower room
- Two further first floor double bedrooms
- Family bathroom
- Detached double garage
- Extensive off street parking
- Large walled garden offering a good degree of privacy
- Over 2,300 sq.ft of accommodation
- Stunning views over the Thame Park Estate and Chiltern hills beyond
- London Marylebone in under 40 minutes from nearby Thame & Haddenham Parkway
- Picturesque market town
- Access to a network of footpaths through the Thame Park Estate and The Phoenix Trail linking to the town centre and local schools
- Selection of excellent schools within the school
- Within a short drive of M40 junction 6

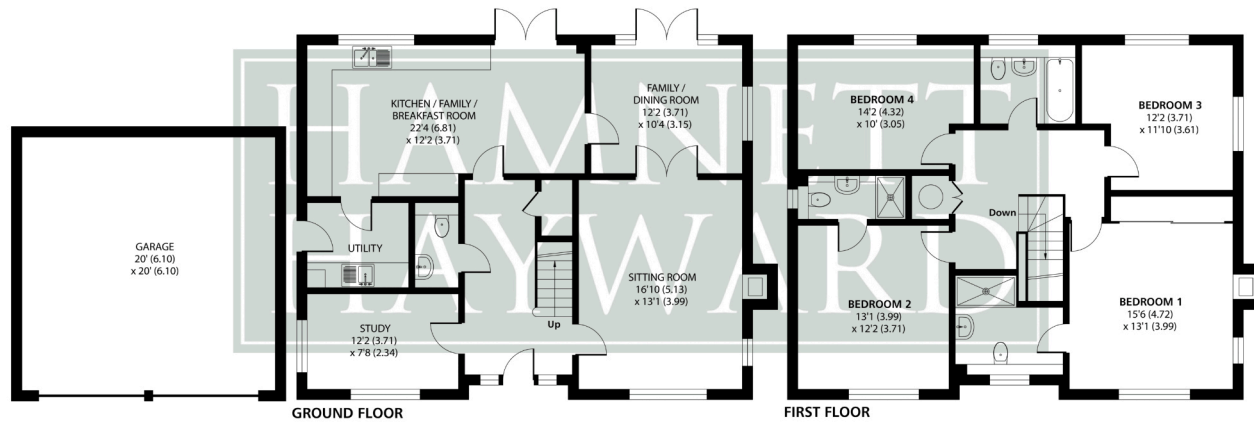
## Hode Garth, Thame, OX9

Approximate Area = 1922 sq ft / 178.5 sq m

Garage = 400 sq ft / 37.1 sq m

Total = 2322 sq ft / 215.6 sq m

For identification only - Not to scale



## LOCATION

Thame is the quintessential English market town, located close to the Chiltern hills and the city of Oxford. Taking its name from the famous river that flows through its centre, the town is blessed with a long and illustrious history. These days it's a bustling, elegant place with something for all tastes. The pretty High Street is dotted with a mix of Medieval and Georgian buildings and home to a huge range of independent shops as well as bars, public houses and restaurants. A Waitrose & Sainsburys supermarket are also located in the centre. Despite Thame's rural position, the town is well positioned for links to London. Trains from the nearby station now reach Marylebone in around 36 minutes (fast train) while the M40 is a short drive from the town centre. Local education facilities are provided for all ages and include three reputable primary schools and the renowned Lord Williams' Comprehensive School which has obtained outstanding status from Ofsted. The preparatory school of Ashfold is located in the nearby village of Dorton, with a choice of private schools in nearby Oxford, all accessible by bus. All church denominations are catered for with a particularly well known Catholic school

## ADDITIONAL INFORMATION

Services: Mains water, Gas and Electricity

Heating: Gas fired central heating to radiators

Energy Rating: Current B (85) Potential A (92)

Local Authority: South Oxfordshire District Council

Postcode: OX9 3GF

Council Tax Band: F

GUIDE PRICE **£975,000**



This floor plan was constructed using measurements provided to ©nichecom 2024 by a third party.  
Produced for Hamnett Hayward Ltd. REF: 1163395

**HAMNETT  
HAYWARD**

HAMNETT HAYWARD

42 Upper High Street, Thame, Oxfordshire OX9 2DW

Tel: 01844 215371

Email: [thame@hamnetthayward.co.uk](mailto:thame@hamnetthayward.co.uk)