



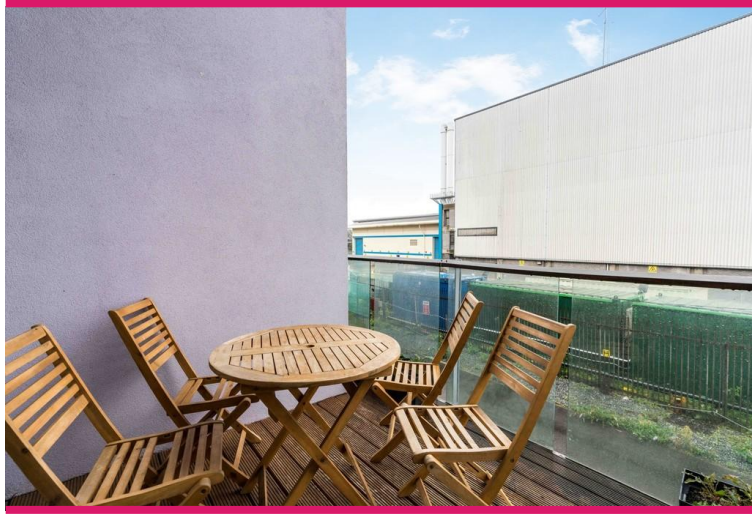
## 207 Crown Place Apartments | London | SE16 3AD

Leasehold

£550,000

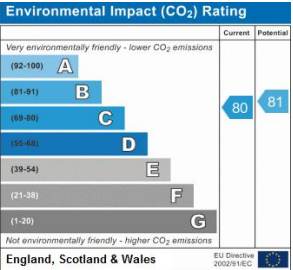
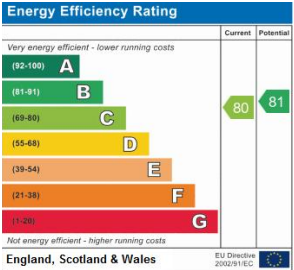
- Gated residence
- Modern block
- Private balcony/ terrace
- Three double bedrooms
- Two bathrooms
- Split level
- Lots of natural light
- River Thames
- South Bermondsey Tube
- Surrey Quays

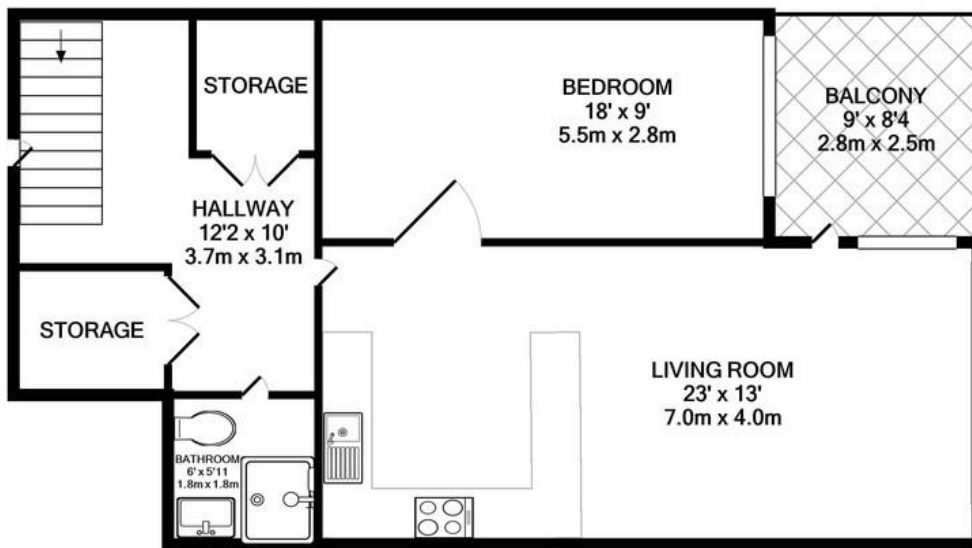




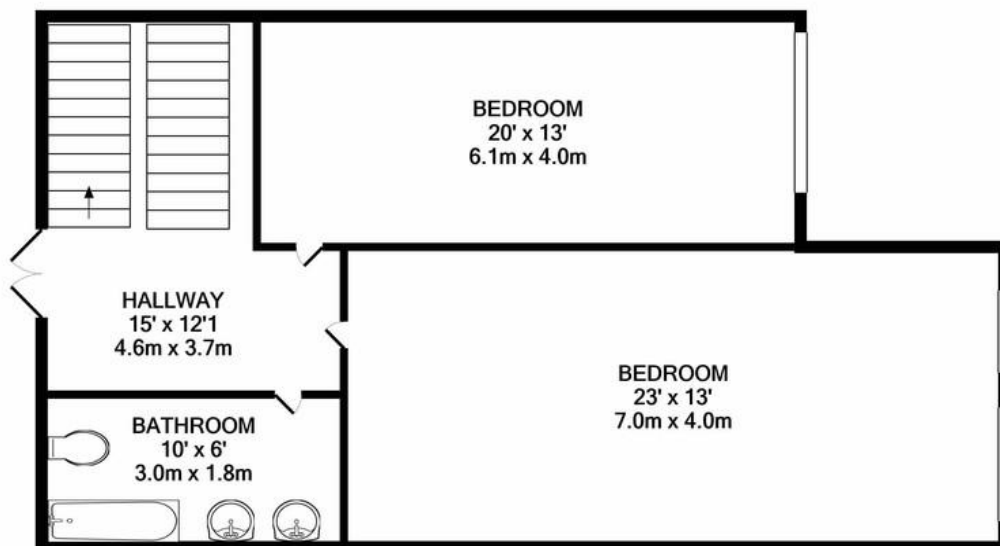
A well laid out balcony apartment, in this popular gated apartment complex. Situated in trendy South Bermondsey, close to South Bermondsey Tube, Surrey Quays and walking distance to Thames Walk. The accommodation is excellent with three double bedrooms and a large open plan lounge / reception room. Split level, over two floors, a bathroom on each floor and good storage. Wood flooring and modern fittings throughout and a nice balcony.







GROUND FLOOR  
APPROX. FLOOR  
AREA 696 SQ.FT.  
(64.6 SQ.M.)



1ST FLOOR  
APPROX. FLOOR  
AREA 733 SQ.FT.  
(68.1 SQ.M.)

TOTAL APPROX. FLOOR AREA 1429 SQ.FT. (132.8 SQ.M.)

Whilst every attempt has been made to ensure the accuracy of the floor plan contained here, measurements of doors, windows, rooms and any other items are approximate and no responsibility is taken for any error, omission, or mis-statement. This plan is for illustrative purposes only and should be used as such by any prospective purchaser. The services, systems and appliances shown have not been tested and no guarantee as to their operability or efficiency can be given  
Made with Metropix ©2021

## Viewing Arrangements

Strictly by appointment

## Contact Details

121 Denmark Hill  
London  
SE5 8EN

[www.urbanvillagehomes.co.uk](http://www.urbanvillagehomes.co.uk)  
[sales@urbanvillagehomes.com](mailto:sales@urbanvillagehomes.com)  
020 3519 9121

Agents Note: Whilst every care has been taken to prepare these sales particulars, they are for guidance purposes only. All measurements are approximate are for general guidance purposes only and whilst every care has been taken to ensure their accuracy, they should not be relied upon and potential buyers are advised to recheck the measurements