



Derwent Grove | London | SE22 8EA

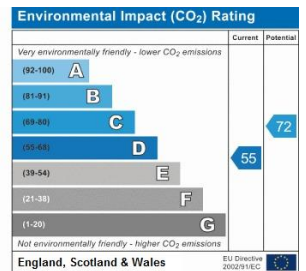
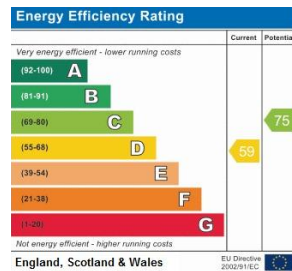
Freehold

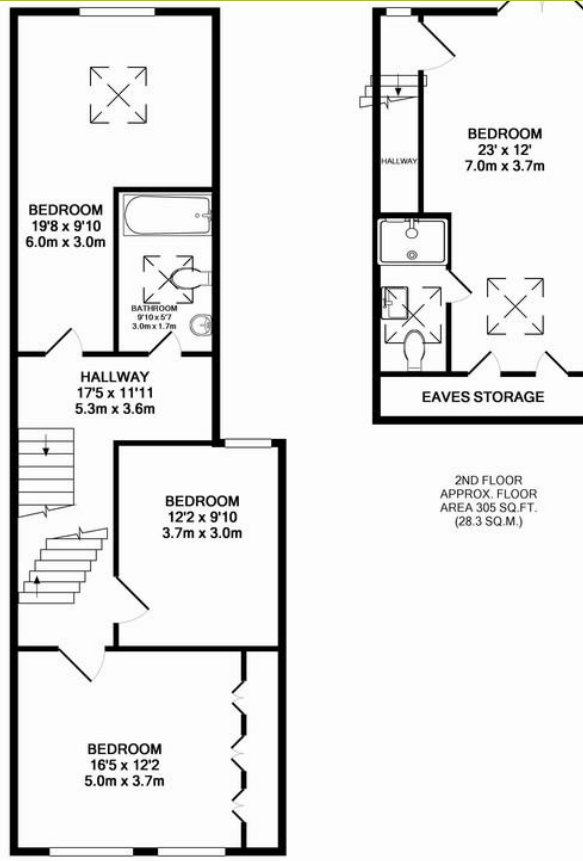
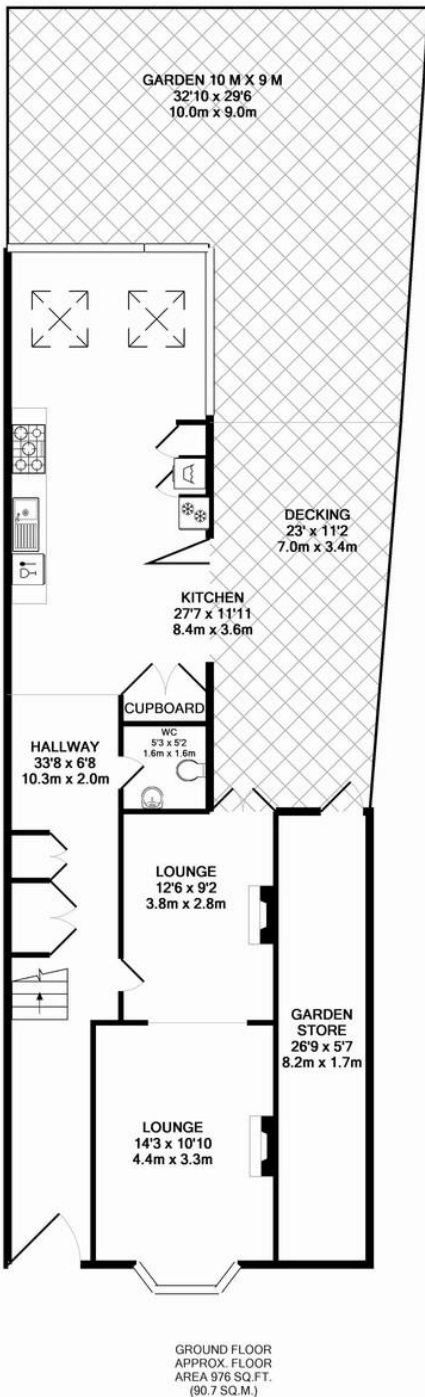
£1,300,000

- Victorian end terrace
- Very well presented
- Four double bedrooms
- Double reception room
- Extended kitchen
- Large dining area
- Bi folding glass doors to garden
- Large garden
- Chain free
- Close to East Dulwich rail



Viewing video in link below. Beautiful Victorian end terrace house, located on a prime road in East Dulwich, a short walk from the station. The house is very well presented and has been extended to provide elegant entertaining space. Four double bedrooms, two bathrooms and a ground floor W.C. A large double reception room, with Period features. The kitchen is modern and well-equipped, it has been extended and has large bifolding doors, leading out onto a large garden, making a beautiful dining area. The garden is larger than average on this road, due to the house being end of terrace, there is side access and a large dry store for bikes and garden essentials. Offered chain free.





1ST FLOOR
APPROX. FLOOR
AREA 686 SQ.FT.
(63.7 SQ.M.)

TOTAL APPROX. FLOOR AREA 1967 SQ.FT. (182.8 SQ.M.)

Whilst every attempt has been made to ensure the accuracy of the floor plan contained here, measurements of doors, windows, rooms and any other items are approximate and no responsibility is taken for any error, omission, or mis-statement. This plan is for illustrative purposes only and should be used as such by any prospective purchaser. The services, systems and appliances shown have not been tested and no guarantee as to their operability or efficiency can be given
Made with Metropix ©2016

Viewing Arrangements

Strictly by appointment

Contact Details

121 Denmark Hill

London

SE5 8EN

www.urbanvillagehomes.co.uk

sales@urbanvillagehomes.com

020 3519 9121

Agents Note: Whilst every care has been taken to prepare these sales particulars, they are for guidance purposes only. All measurements are approximate and for general guidance purposes only and whilst every care has been taken to ensure their accuracy, they should not be relied upon and potential buyers are advised to recheck the measurements