

80b Elfindale Road | London | SE24  
9NW

Leasehold

£500,000

- Two double bedrooms
- In need of renovation
- Large reception room
- Leasehold
- North Dulwich Station
- Split Level
- Herne Hill Station
- Excellent local school catchment
- Dulwich Village
- Shared garden.





Occupying the entire first floor of a characterful house, this spacious property offers excellent potential for buyers looking to modernise and create a home tailored to their own taste.

The flat features a spacious living room with large windows, a separate kitchen, two comfortable bedrooms, and a bathroom. High ceilings and original features add a sense of charm and light throughout. While the property requires updating, it provides a solid footprint and an appealing layout ready for improvement.

Located in a sought-after residential area, this home is within easy reach of transport links, and green spaces, making it ideal for first-time buyers, investors, or anyone looking for a rewarding renovation project.

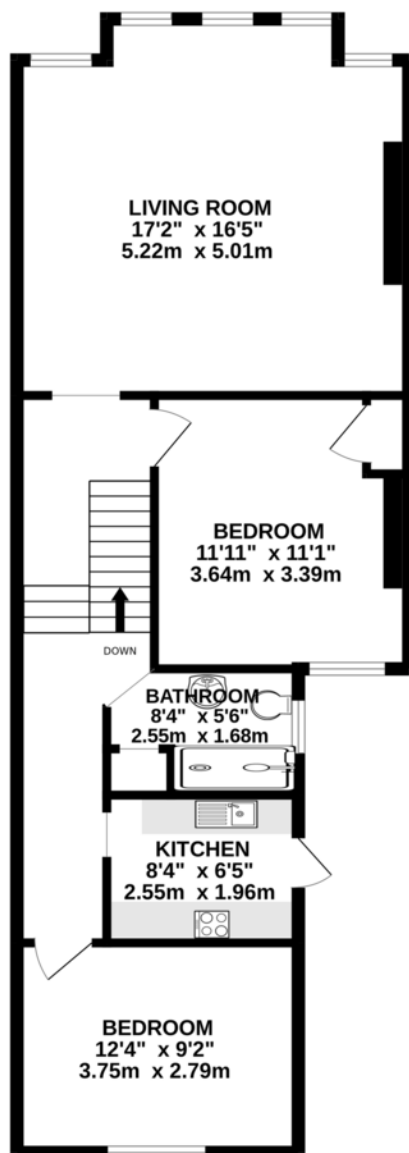
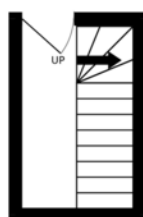
© 2024 The Estate Agent. All rights reserved. This is a virtual representation of the property and does not constitute an offer of real estate services.



Score	Energy rating	Current	Potential
92+	A		
81-91	B		81 B
69-80	C	71 C	
55-68	D		
39-54	E		
21-38	F		
1-20	G		

GROUND FLOOR  
30 sq.ft. (2.8 sq.m.) approx.

1ST FLOOR  
724 sq.ft. (67.2 sq.m.) approx.



TOTAL FLOOR AREA : 753sq.ft. (70.0 sq.m.) approx.

Whilst every attempt has been made to ensure the accuracy of the floorplan contained here, measurements of doors, windows, rooms and any other items are approximate and no responsibility is taken for any error, omission or mis-statement. This plan is for illustrative purposes only and should be used as such by any prospective purchaser. The services, systems and appliances shown have not been tested and no guarantee as to their operability or efficiency can be given.  
Made with MetroPix ©2025

## Viewing Arrangements

Strictly by appointment

## Contact Details

121 Denmark Hill

London

SE5 8EN

[www.urbanvillagehomes.co.uk](http://www.urbanvillagehomes.co.uk)

[sales@urbanvillagehomes.com](mailto:sales@urbanvillagehomes.com)

020 3519 9121

Agents Note: Whilst every care has been taken to prepare these sales particulars, they are for guidance purposes only. All measurements are approximate and are for general guidance purposes only and whilst every care has been taken to ensure their accuracy, they should not be relied upon and potential buyers are advised to recheck the measurements