



1 Milles Square | London | SW9 8GA

%tenure%

£1,700 pcm

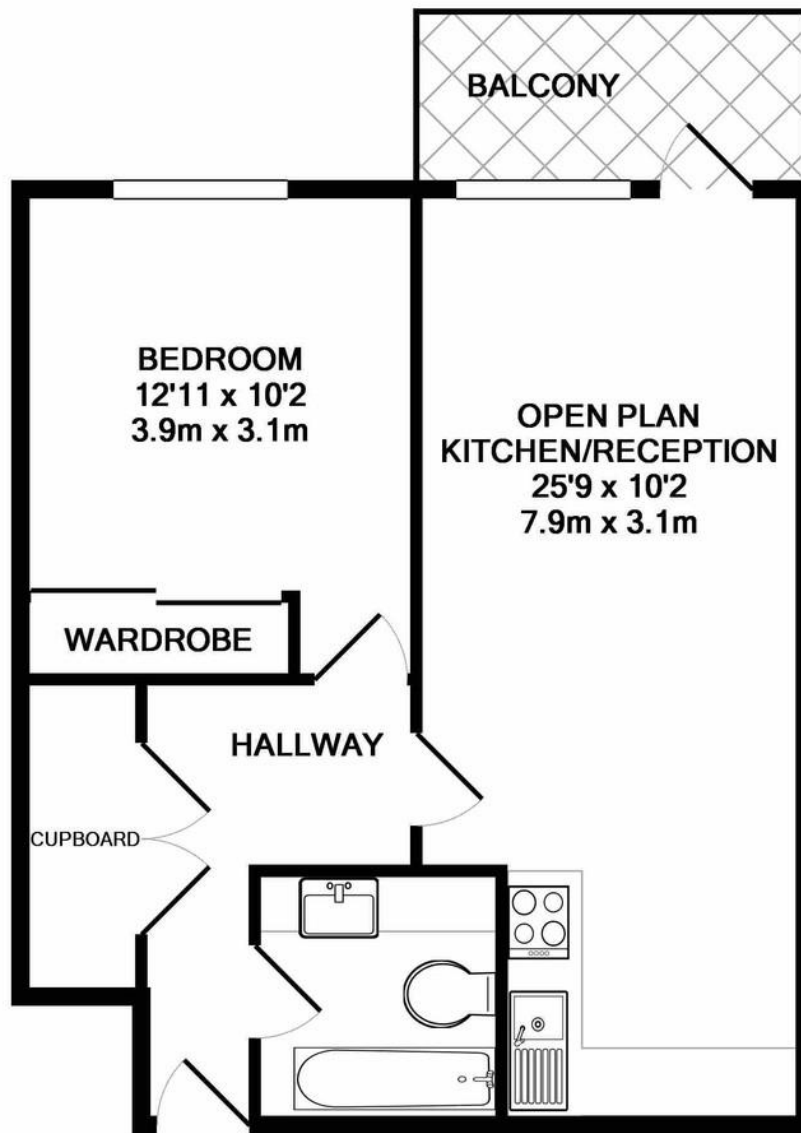
- One Bedroom Apartment
- Sunny Balcony
- Open Plan Kitchen/Living
- Modern Bathroom and Kitchen
- Concierge Service
- Bike Storage
- Brixton Village
- Brixton Tube
- Coldharbour Lane
- Pop Brixton



Stunning one bedroom apartment in an enviable location, right in the heart of Brixton. The flat boasts a modern open plan living room and kitchen with large windows and an incredibly sunny balcony. Both the bathroom and kitchen are modern and spacious and all fittings are modern. The development provides a concierge service 7 days a week, as well as secure bike storage. The flat is a stones throw away from all the amenities of Brixton with Brixton village, Atlantic Road and Pop Brixton just around the corner. Brixton Tube is 6 minutes walk away, and Loughborough Junction is 12 minutes away with Thameslink routes to Victoria and Blackfriars. Available Furnished.



Energy Efficiency Rating		
	Current	Potential
Very energy efficient - lower running costs		
(92-100) A		
(81-91) B	83	83
(69-80) C		
(55-68) D		
(39-54) E		
(21-38) F		
(1-20) G		
Not energy efficient - higher running costs		



TOTAL APPROX. FLOOR AREA 508 SQ.FT. (47.2 SQ.M.)

Whilst every attempt has been made to ensure the accuracy of the floor plan contained here, measurements of doors, windows, rooms and any other items are approximate and no responsibility is taken for any error, omission, or mis-statement. This plan is for illustrative purposes only and should be used as such by any prospective purchaser. The services, systems and appliances shown have not been tested and no guarantee as to their operability or efficiency can be given

Made with Metropix ©2019

Viewing Arrangements

Strictly by appointment

Contact Details

121 Denmark Hill

London

SE5 8EN

www.urbanvillagehomes.co.uk

lettings@urbanvillagehomes.com

020 3519 9121

Agents Note: Whilst every care has been taken to prepare these sales particulars, they are for guidance purposes only. All measurements are approximate are for general guidance purposes only and whilst every care has been taken to ensure their accuracy, they should not be relied upon and potential buyers are advised to recheck the measurements