



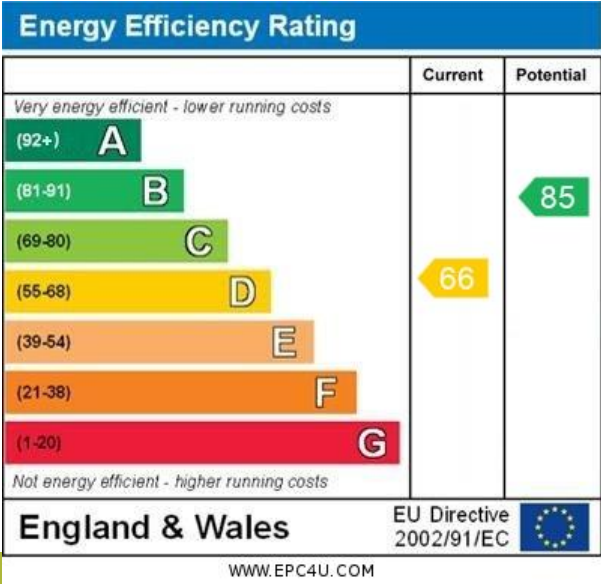
Mortlock Close | London | SE15

£2,600 pcm

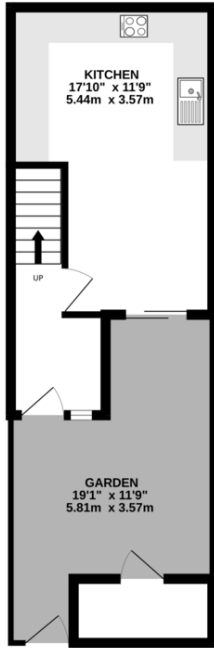
- Three bedrooms
- Private garden
- Town house
- Modern kitchen diner
- Queens road Peckham
- Local amenities
- Nunhead
- Peckham Rye Park
- Excellent bus routes
- Unfurnished



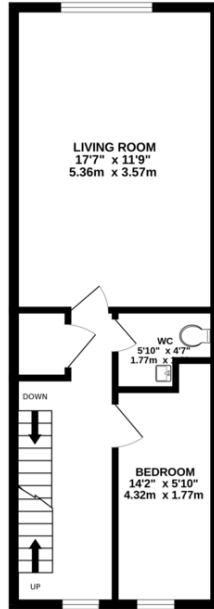
A three bedroom property split over three floors with private garden. Open plan kitchen diner with access to the garden perfect for entertaining. On the first floor is a large reception room, one bedroom and WC. Upstairs again are two double bedrooms and family bathroom. Mortlock Close is situated in a vibrant community with excellent transport links from Queens Road and Peckham Rye as well as National Rail services from Nunhead. The surrounding area boasts a variety of shops, independent restaurants and green spaces such as Cossal Park and Peckham Rye park



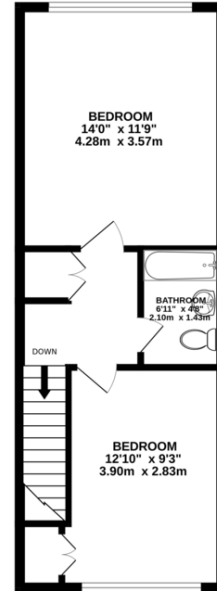
GROUND FLOOR
271 sq.ft. (25.2 sq.m.) approx.



1ST FLOOR
406 sq.ft. (37.7 sq.m.) approx.



2ND FLOOR
395 sq.ft. (36.7 sq.m.) approx.



TOTAL FLOOR AREA : 1072 sq.ft. (99.6 sq.m.) approx.

Whilst every attempt has been made to ensure the accuracy of the floorplan contained here, measurements of doors, windows, rooms and any other items are approximate and no responsibility is taken for any error, omission or mis-statement. This plan is for illustrative purposes only and should be used as such by any prospective purchaser. The services, systems and appliances shown have not been tested and no guarantee as to their operability or efficiency can be given.
Made with Metropix ©2025

Viewing Arrangements

Strictly by appointment

Contact Details

121 Denmark Hill

London

SE5 8EN

www.urbanvillagehomes.co.uk

lettings@urbanvillagehomes.com

020 3519 9121

Agents Note: Whilst every care has been taken to prepare these sales particulars, they are for guidance purposes only. All measurements are approximate are for general guidance purposes only and whilst every care has been taken to ensure their accuracy, they should not be relied upon and potential buyers are advised to recheck the measurements