



68 Bavent Road | London | SE5 9RZ

Share of Freehold

£550,000

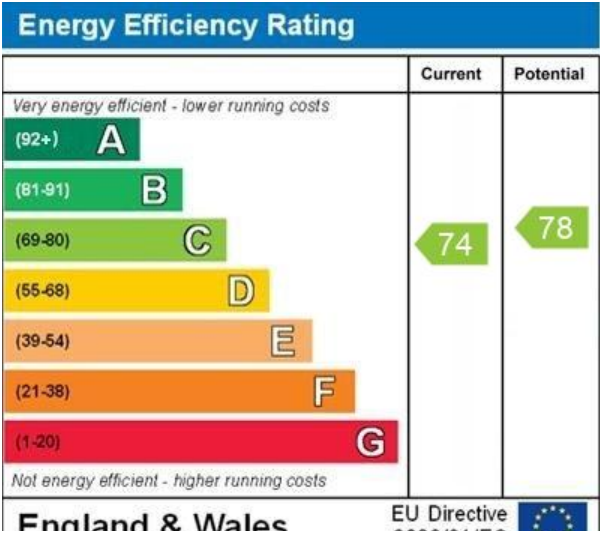
- Two double bedrooms
- Two bathrooms
- Private garden
- Share of freehold
- Separate Kitchen / Living room
- Lots of natural light
- Denmark Hill Station
- Local amenities
- Excellent bus routes
- Loughborough Junction





Bright and spacious two bed two bath maisonette renovated to a high standard on a quiet residential street in the heart of Camberwell. Both bedrooms are doubles the master benefiting from an ensuite shower room and lots of natural light from the bay window. The kitchen has a classic finish with space to dine and access to a small balcony and staircase, which leads to a well-manicured garden that gets excellent afternoon sun. Excellent travel connections, a short walk to Denmark Hill Station for London Overground, Thameslink and National Rail. Loughborough Junction station is equally close with links to Blackfriars, City Thameslink, Farringdon and St Pancras. The nightlife of Brixton and the Victoria Line is also a short bus ride away. Camberwell is a 2-minute walk and has a range of shops, large supermarkets, outstanding







## Viewing Arrangements

Strictly by appointment

## Contact Details

121 Denmark Hill

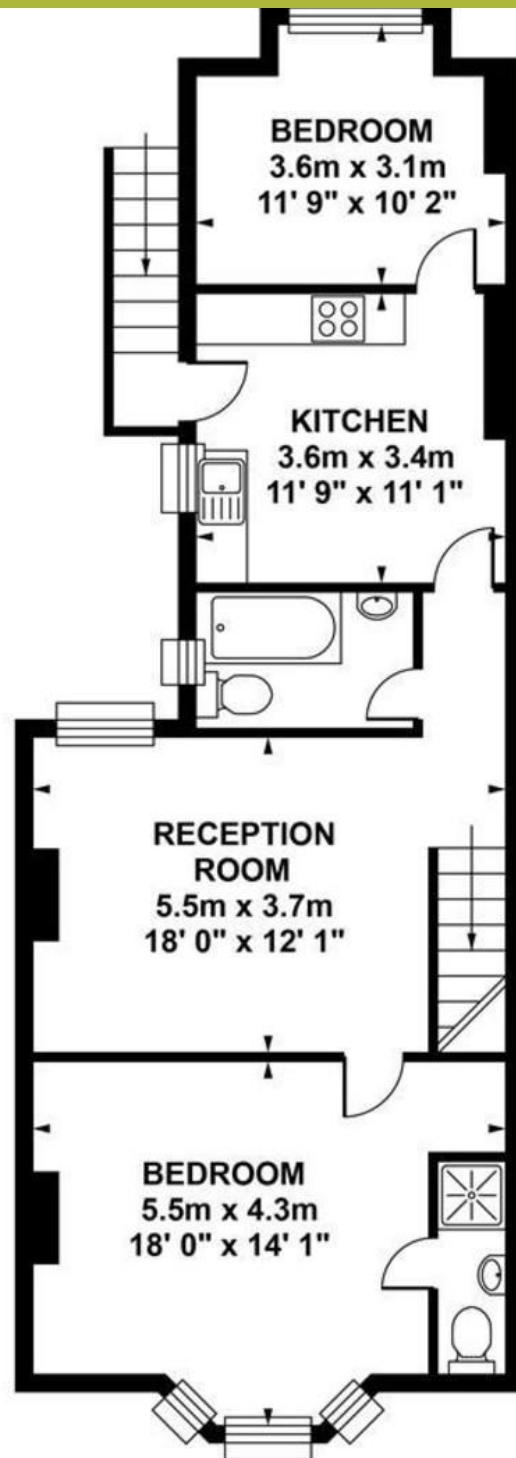
London

SE5 8EN

[www.urbanvillagehomes.co.uk](http://www.urbanvillagehomes.co.uk)

[sales@urbanvillagehomes.com](mailto:sales@urbanvillagehomes.com)

020 3519 9121



## FIRST FLOOR

Approximate. internal area :  
74.41 sqm / 796 sq ft

Agents Note: Whilst every care has been taken to prepare these sales particulars, they are for guidance purposes only. All measurements are approximate and are for general guidance purposes only and whilst every care has been taken to ensure their accuracy, they should not be relied upon and potential buyers are advised to recheck the measurements.