



Vestry Road | London | SE5

Leasehold

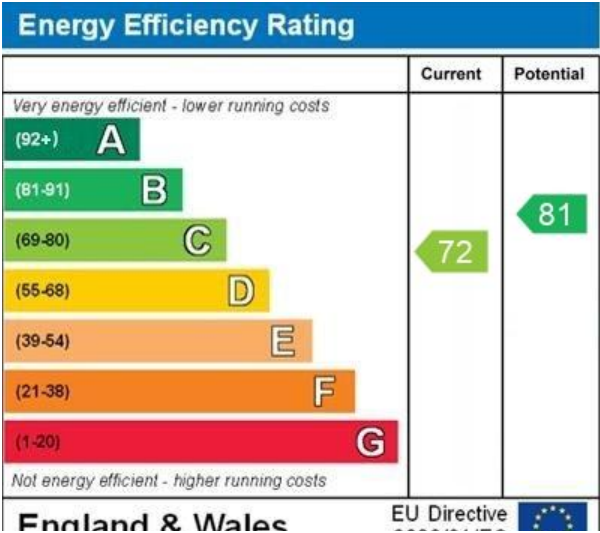
£600,000

- Four double bedrooms
- Split level
- Chain free
- Large reception
- Separate Kitchen / Living room
- Excellent location
- Denmark Hill Station
- Excellent bus routes
- Planning previously granted for a terrace.
- Long Lease



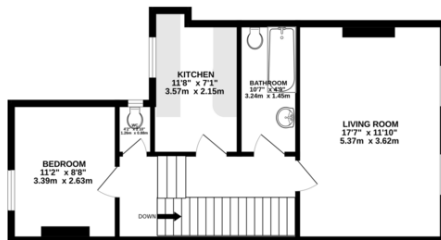
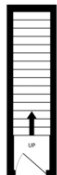


A roomy four bed split level maisonette on a quiet street next to Lucas gardens and conveniently opposite a parade of shops. Potential to acquire planning for an outside terrace. On the first floor is a large reception / dining room, separate kitchen, family bathroom, WC and one bedroom. The remaining bedrooms are on the second floor. A well proportioned property in a great location 10 minutes walk to Denmark Hill Station, and 14 to Peckham Rye Station. You're really close to central Camberwell, and Peckham . The South London Gallery and St. Giles Church are your most local landmarks (you're just six minutes to either). Long leasehold. Bus routes at the foot of the street, from Camberwell Church Street. Oval is a short bus ride to connect with the tube there. For more options, Peckham, Herne Hill, Dulwich, Brixton and

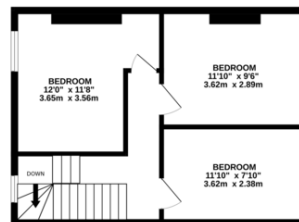




1275 SQ.M  
104,427.1714 sq.ft approx



2015 SQ.M  
194,427.1714 sq.ft approx



TOTAL FLOOR AREA: 992 sq.ft. (92.2 sq.m.) approx.

Whilst every attempt has been made to ensure the accuracy of the floorplan contained here, measurements of doors, windows, rooms and any other items are approximate and no responsibility is taken for any error, omission or mis-statement. This plan is for illustrative purposes only and should be used as such by any prospective purchaser. The services, systems and appliances shown have not been tested and no guarantee as to their operability or efficiency can be given.  
Made with Metropix 6/2025

## Viewing Arrangements

Strictly by appointment

## Contact Details

121 Denmark Hill

London

SE5 8EN

[www.urbanvillagehomes.co.uk](http://www.urbanvillagehomes.co.uk)

[sales@urbanvillagehomes.com](mailto:sales@urbanvillagehomes.com)

020 3519 9121

Agents Note: Whilst every care has been taken to prepare these sales particulars, they are for guidance purposes only. All measurements are approximate are for general guidance purposes only and whilst every care has been taken to ensure their accuracy, they should not be relied upon and potential buyers are advised to recheck the measurements