

Mullins Place | London | SW4

Leasehold

£750,000

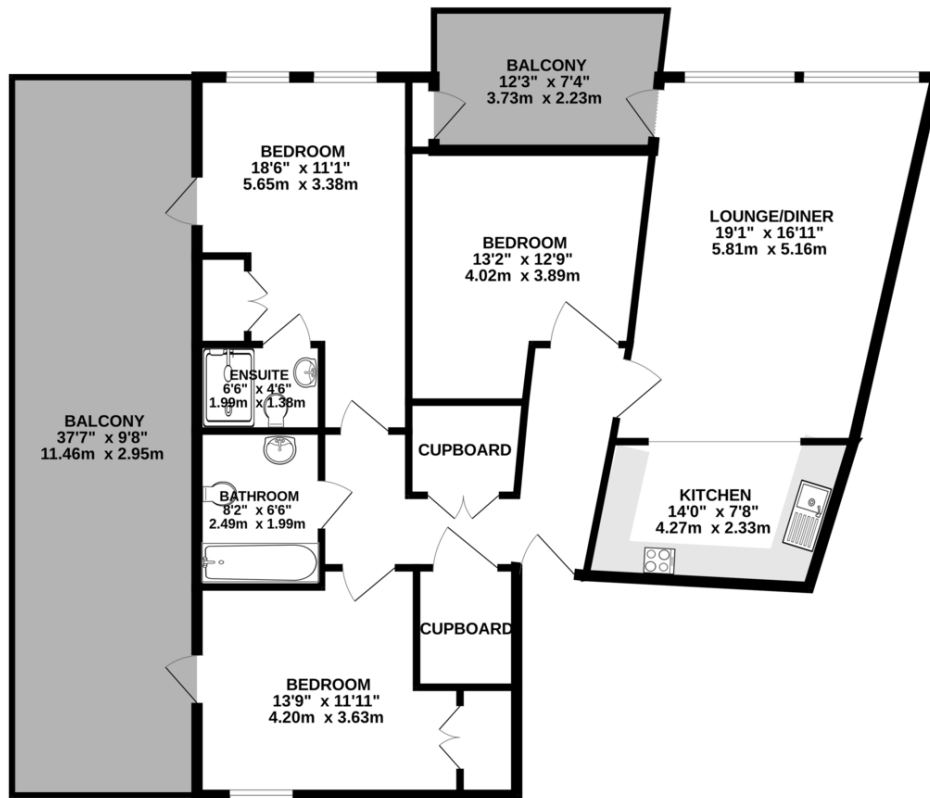
- Three double bedrooms
- Top floor
- Private balcony
- Lots of natural light
- Open plan Kitchen / Living room
- Local amenities
- Bike storage
- Excellent bus routes
- Clapham transport links
- Long lease



Three double bedroom apartment in a modern construction with two large private balconies that can be accessed from both the living and sleeping areas. This spacious apartment on the top floor is flooded with natural light, has a large living room with open-plan kitchen perfect for entertaining. The apartment has a family bathroom as well as an en-suite in the master, plenty of storage. The flat is located on the southern side of Clapham, residents are spoilt for access to a wealth of local amenities including the parade of shops, bars and restaurants of Abbeville Village, Clapham Old Town and Brixton Market. Commuters have a range of options including Clapham North & Common and south Underground (Northern), Brixton Underground (Victoria) and a constant flow of regular bus routes into the City. There is bike storage in the building, and residents parking available.



1081 sq.ft. (100.5 sq.m.) approx.



TOTAL FLOOR AREA: 1081 sq.ft. (100.5 sq.m.) approx.

Whilst every attempt has been made to ensure the accuracy of the floorplan contained here, measurements of doors, windows, rooms and any other items are approximate and no responsibility is taken for any error, omission or mis-statement. This plan is for illustrative purposes only and should be used as such by any prospective purchaser. The services, systems and appliances shown have not been tested and no guarantee as to their operability or efficiency can be given.
Made with Metropix ©2025

Viewing Arrangements

Strictly by appointment

Contact Details

121 Denmark Hill

London

SE5 8EN

www.urbanvillagehomes.co.uk

sales@urbanvillagehomes.com

020 3519 9121

Agents Note: Whilst every care has been taken to prepare these sales particulars, they are for guidance purposes only. All measurements are approximate and for general guidance purposes only and whilst every care has been taken to ensure their accuracy, they should not be relied upon and potential buyers are advised to recheck the measurements