



18 Bicknell Road | London | SE5 9AU

Freehold

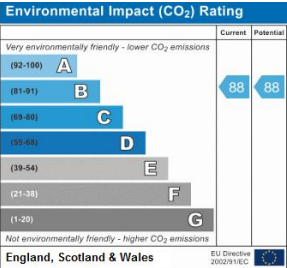
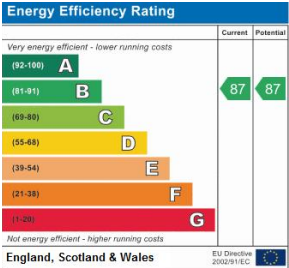
£925,000

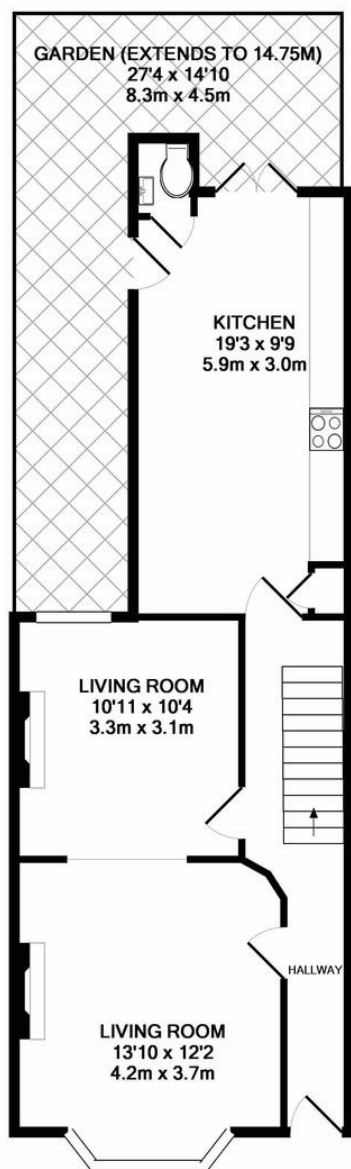
- Three double bedrooms
- Private garden
- Potential to extend SPP
- Freehold
- Chain free
- Excellent location
- Denmark Hill Station
- Local amenities
- Ruskin Park
- Loughborough Junction



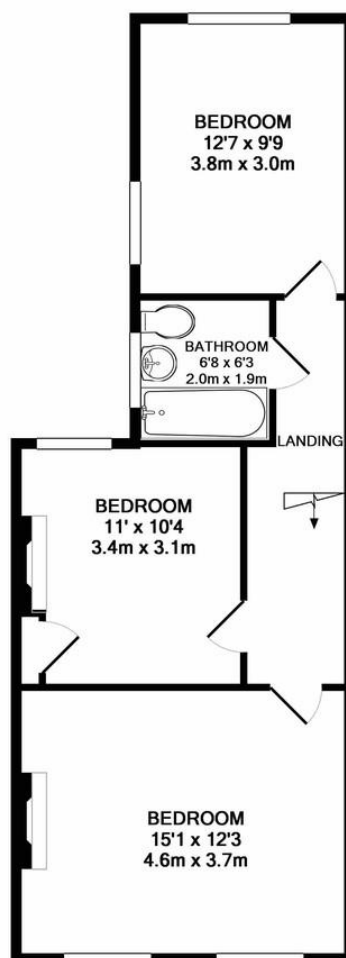


Victorian mid terraced house with period features. Located in the popular Ruskin park area of Denmark Hill. Within easy walking distance of Denmark Hill station, Loughborough junction, Herne Hill and Brixton tube. The house has a good sized kitchen with space for dining table, wooden floors throughout and a double reception downstairs. There are three double bedrooms and family bathroom upstairs. Scope to extend and update cosmetically.





GROUND FLOOR  
APPROX. FLOOR  
AREA 557 SQ.FT.  
(51.8 SQ.M.)



1ST FLOOR  
APPROX. FLOOR  
AREA 538 SQ.FT.  
(50.0 SQ.M.)

TOTAL APPROX. FLOOR AREA 1095 SQ.FT. (101.8 SQ.M.)

Whilst every attempt has been made to ensure the accuracy of the floor plan contained here, measurements of doors, windows, rooms and any other items are approximate and no responsibility is taken for any error, omission, or mis-statement. This plan is for illustrative purposes only and should be used as such by any prospective purchaser. The services, systems and appliances shown have not been tested and no guarantee as to their operability or efficiency can be given  
Made with Metropix ©2018

## Viewing Arrangements

Strictly by appointment

## Contact Details

121 Denmark Hill

London

SE5 8EN

[www.urbanvillagehomes.co.uk](http://www.urbanvillagehomes.co.uk)

[sales@urbanvillagehomes.com](mailto:sales@urbanvillagehomes.com)

020 3519 9121

Agents Note: Whilst every care has been taken to prepare these sales particulars, they are for guidance purposes only. All measurements are approximate and for general guidance purposes only and whilst every care has been taken to ensure their accuracy, they should not be relied upon and potential buyers are advised to recheck the measurements