



Champion Hill | London | SE5 8TG

Leasehold

£600,000

- Three double bedrooms
- Third floor city views
- Open plan kitchen reception
- Private balcony
- Bright and airy
- Ruskin Park
- Denmark Hill Station
- Local amenities
- Herne Hill
- Excellent transport links



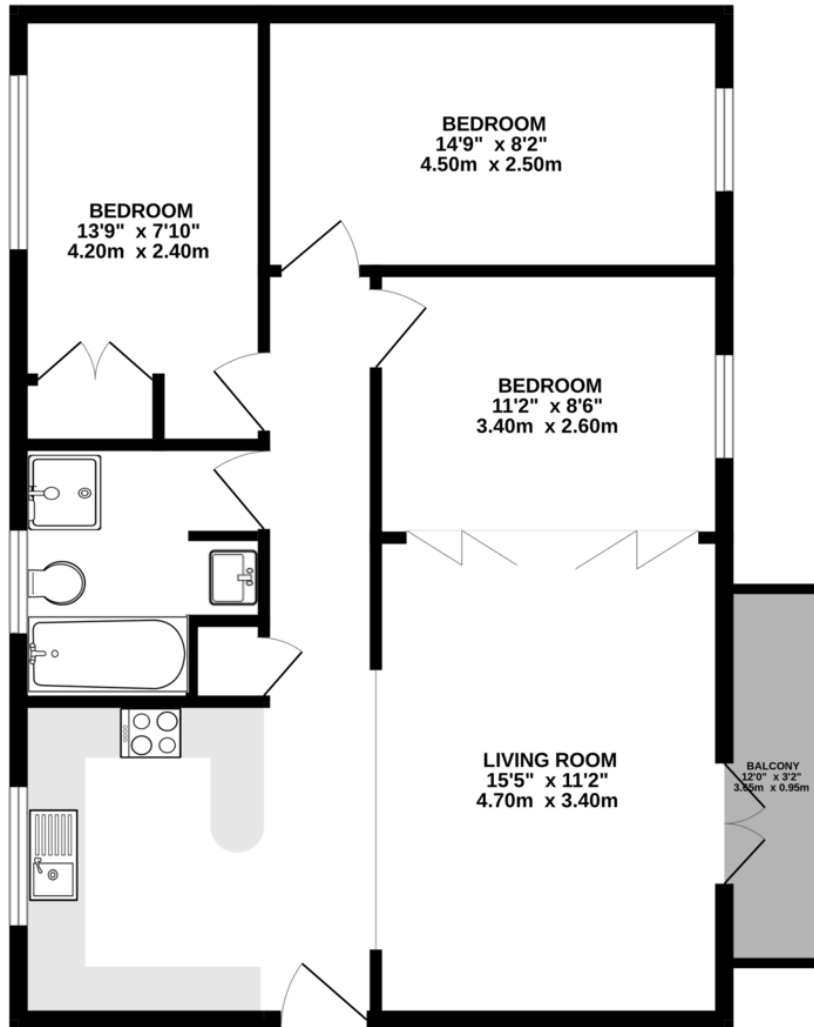
Stunning open plan layout, the present owners have worked with an architect to create the immaculate finish and design throughout to this very stylish three bedroom apartment. Located on the third floor of Ruskin Park House. Spacious and bright with a private balcony and large windows.

This lovely positioned apartment offers double aspect views. Ruskin Park House is a desirable building of purpose built apartments, maintained to a high standard by the onsite estate manager and caretakers. The excellent location borders Camberwell, Heme Hill, Dulwich and Brixton. Minutes away from Denmark Hill station and Ruskin Park. Long Leasehold with share in the freehold Company.



%epcGraph_c_1_300%

THIRD FLOOR
872 sq.ft. (81.0 sq.m.) approx.



TOTAL FLOOR AREA : 872sq.ft. (81.0 sq.m.) approx.

Whilst every attempt has been made to ensure the accuracy of the floorplan contained here, measurements of doors, windows, rooms and any other items are approximate and no responsibility is taken for any error, omission or mis-statement. This plan is for illustrative purposes only and should be used as such by any prospective purchaser. The services, systems and appliances shown have not been tested and no guarantee as to their operability or efficiency can be given.
Made with Metropix ©2025

Viewing Arrangements

Strictly by appointment

Contact Details

121 Denmark Hill

London

SE5 8EN

www.urbanvillagehomes.co.uk

sales@urbanvillagehomes.com

020 3519 9121

Agents Note: Whilst every care has been taken to prepare these sales particulars, they are for guidance purposes only. All measurements are approximate and for general guidance purposes only and whilst every care has been taken to ensure their accuracy, they should not be relied upon and potential buyers are advised to recheck the measurements